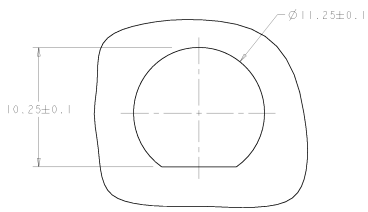
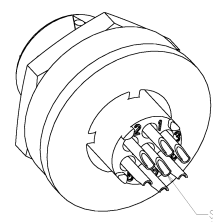
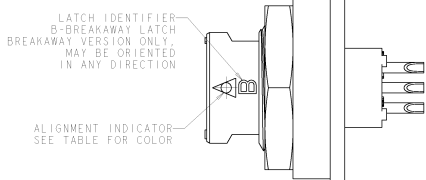


REV. NO.		DESCRIPTION		DATE	BY	CHKD	APP'D
0	1	0	RELEASED BY: 06/28/04				

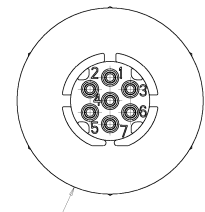
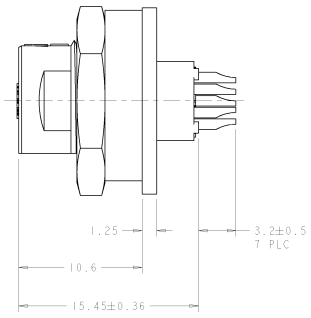
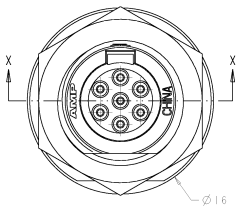


SUGGESTED PANEL CUTOUT
 3.18 MAX PANEL THICKNESS

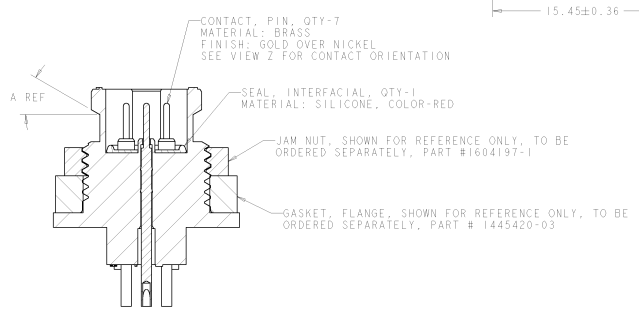


VIEW Z

SOLDER TERMINATION AREA OF CONTACT IN CIRCUIT #4 MAY BE ORIENTED UP OR DOWN



HOUSING, QTY-1
 MATERIAL: THERMOPLASTIC, COLOR-SEE TABLE



SECTION X-X

HOUSING COLOR	INDICATOR COLOR	CONTACT CIRCUITS	LATCH	A REF	PART NUMBER
WHITE	WHITE	1, 7	BREAKAWAY	30°	1-1445721-2
BLACK	WHITE	1, 7	POSITIVE	0°	1-1445721-1
WHITE	WHITE	2, 3, 7	BREAKAWAY	30°	1-1445721-0
BLACK	WHITE	2, 3, 7	POSITIVE	0°	1445721-09
WHITE	WHITE	2, 3, 5, 6	BREAKAWAY	30°	1445721-08
BLACK	WHITE	2, 3, 5, 6	POSITIVE	0°	1445721-07
WHITE	WHITE	2, 3, 4, 5, 6	BREAKAWAY	30°	1445721-06
BLACK	WHITE	2, 3, 4, 5, 6	POSITIVE	0°	1445721-05
WHITE	WHITE	1, 2, 3, 5, 6, 7	BREAKAWAY	30°	1445721-04
BLACK	WHITE	1, 2, 3, 5, 6, 7	POSITIVE	0°	1445721-03
WHITE	WHITE	ALL	BREAKAWAY	30°	1445721-02
BLACK	WHITE	ALL	POSITIVE	0°	1445721-01

MANUFACTURER: TE PART NUMBER: 1445721-01 DATE: 06/28/04 BY: TERRY L. BROWN CHECKED BY: TERRY L. BROWN	PART NUMBER: 1445721-01 DATE: 06/28/04 BY: TERRY L. BROWN CHECKED BY: TERRY L. BROWN	Alcotech TECH ELECTRONICS HARRISBURG, PA 17108-0808
ASSEMBLY, RECEPTACLE, SOLDER CUP, PANEL MOUNT, 7 POSITION, MICRO CPC		
MATERIAL: TE SEE CALIBRIT	FINISH: TE SEE CALIBRIT	QTY: 1 UNIT: 1 ORDERING CODE: A CUSTOMER DRAWING: 1445721-01