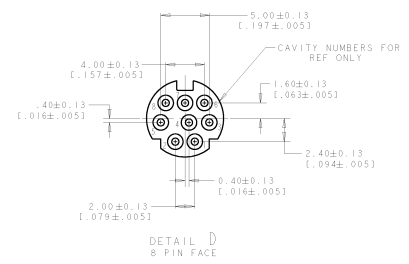
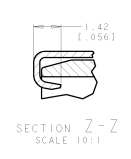
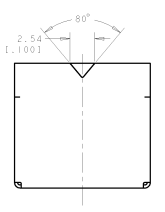
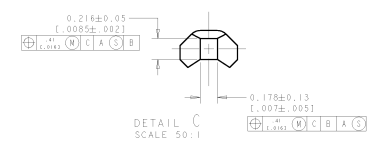
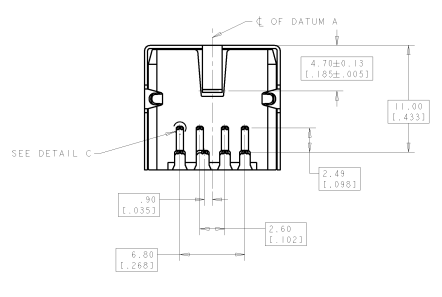
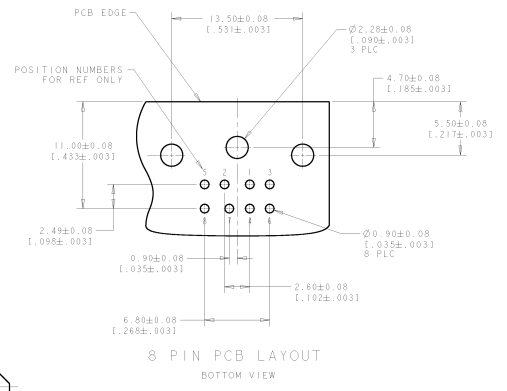
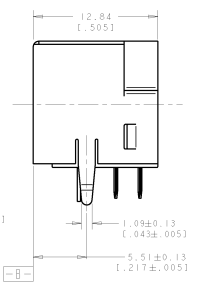
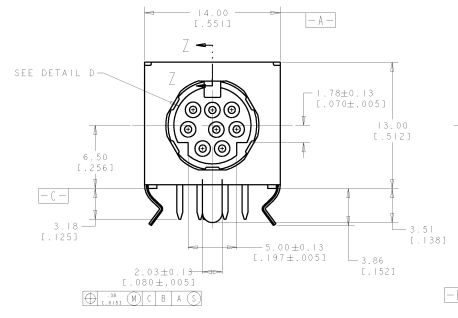


8	7	6	5	4	3	2	1
DATE APPROVED BY: [Signature]	REVISIONS FOR FACILITIES						
BY: [Signature]	BY: [Signature]						

REV	BY	DATE	DESCRIPTION	CHK	APP
01	FF	10/20/04	REVISION	4/MS	L/SP



- △ MATERIAL:  
RECEPTACLE CONTACTS: PHOSPHOR BRONZE  
RECEPTACLE SHIELD: COPPER ALLOY.  
HOUSING: UL RECOGNIZED 94V-0 RATED THERMOPLASTIC, COLOR, BLACK
- △ PLATING:  
RECEPTACLE CONTACTS - GOLD FLASH PLATED ON MATING END, MATTE-TIN PLATED .0030 MIN (.000120 MIN) THICK ON SOLDER TAIL ALL OVER .0013 MIN (.00050 MIN) THICK NICKEL.
- △ PLATING:  
RECEPTACLE SHIELD: PRE-TIN PLATED
- 4. RECEPTACLE ASSEMBLY MATES WITH 8 PIN 9.00±.10 [3.54±.004]



P/N: 5749232-1 AS SHOWN		REV: 03/20/05		Tape Electronics Singapore Pte. Ltd.	
MATERIAL: [Symbol]		MATERIAL: [Symbol]		RECEPTACLE ASSY W/ HOLD DOWN, 8 POS., RIGHT ANGLE, MINIATURE CIRCULAR DIN	
DIMENSIONS: [Symbol]		DIMENSIONS: [Symbol]		REV: 00779	
DATE: 10/20/04		DATE: 10/20/04		C: 5749232	
BY: [Signature]		BY: [Signature]		APP: [Signature]	