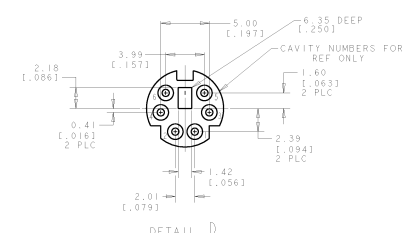
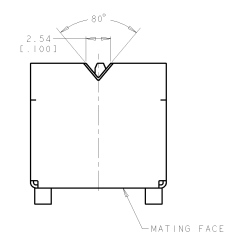
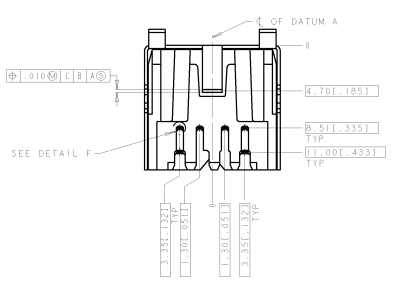
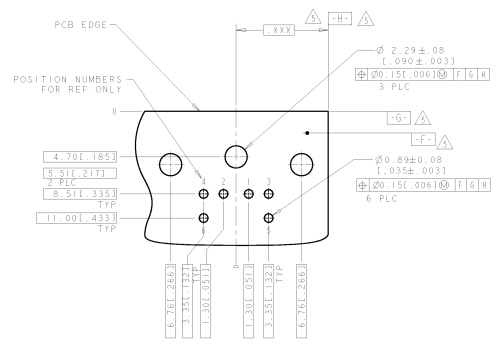
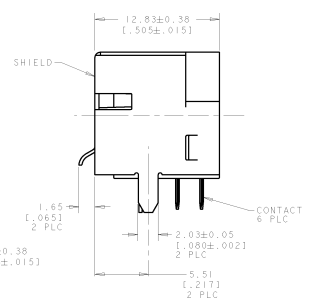
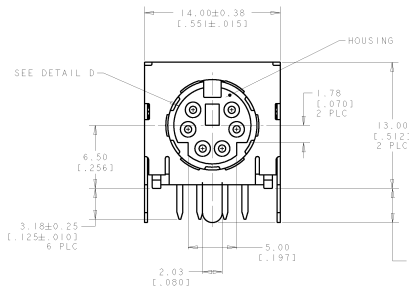


8	7	6	5	4	3	2	1
DATE APPROVED BY: [Signature]	DESIGNED BY: [Signature]						
BY: [Signature]	DATE: [Date]						

REVISIONS			
NO.	BY	DATE	DESCRIPTION
1
2



- ▲ SHIELD & CONTACTS: COPPER ALLOY.
HOUSING: POLYESTER, UL 94V-0 RATED, BLACK.
- ▲ 0.76 μm [.000030] MIN GOLD FOR A LENGTH OF 1.27 (.050) MIN FROM MATING END, 3.05 μm [.000120] MIN MATTE-TIN ON OPPOSITE END, BOTH OVER 1.27 μm [.000050] MIN NICKEL.
- ▲ 1.50-4.00 μm [.000059-.000158] THICK BRIGHT TIN.
- ▲ GOLD PLATING PER MIL-G-45204, TIN PLATING PER MIL-T-10727, NICKEL PLATING PER QQ-N-290.
- ▲ DATUMS AND BASIC DIMENSION SUPPLIED BY CUSTOMER.



RECOMMENDED PC BOARD LAYOUT
BOTTOM VIEW

P/N: 5750071-1 AS SHOWN

MIL-C-19398 (REV. 10-1974) TYPE III CONTACTS		MIL-C-19398 (REV. 10-1974) TYPE III CONTACTS	
SYMBOL	DESCRIPTION	SYMBOL	DESCRIPTION
RECEPTACLE	RECEPTACLE	RECEPTACLE	RECEPTACLE
CONTACT	CONTACT	CONTACT	CONTACT
TERMINAL	TERMINAL	TERMINAL	TERMINAL
...