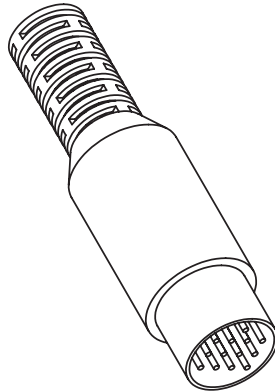
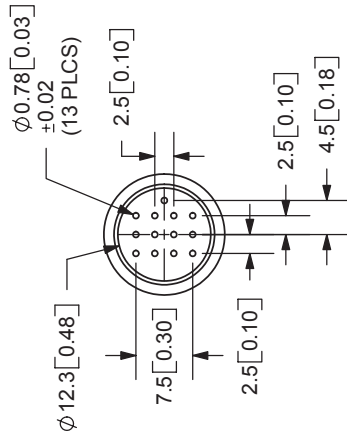
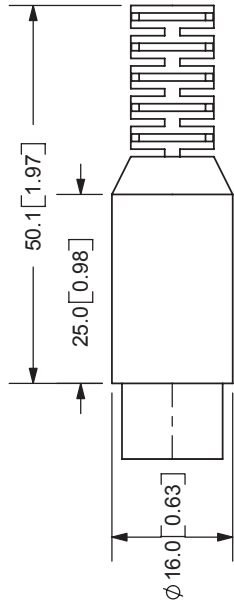
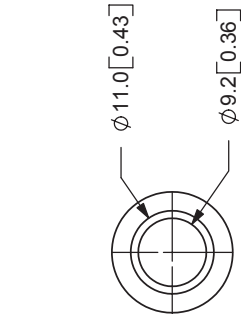


REV. A	DESCRIPTION NEW DRAWING	DATE 2/24/2006
-----------	----------------------------	-------------------



TOLERANCE:
X.X ±0.1mm
X.XX ±0.05mm



9615 SW Allen Blvd., Ste. 103
Beaverton, OR 97005
Phone: 503-643-4899
800-275-4899
Fax: 503-372-1266
Website: www.cui.com

SPECIFICATIONS:
RATING: 100V DC @ 1A
CONTACT RESISTANCE: Pins-30m OHMS MAX; Shell-50m OHMS MAX
INSULATION RESISTANCE: 100M OHMS MIN; 500V DC
VOLTAGE WITHSTAND: 1000A AC R.M.S. FOR 1 MINUTE
LIFE: 5,000 CYCLES
OPERATING TEMP: -5° ~ +110°C

TITLE: IN-LINE PLUG	REV: A
PART NO: SD-130	UNITS: MM [INCHES]
DRAWN BY: ZRJ	APPROVED BY:
	SCALE: 1:1

	MATERIAL	PLATING
PINS	Brass	Silver
SHELL	Steel	Nickel
INSULATOR	PBT	
BOOT	PVC	

PC FILE NAME: SD-130

COPYRIGHT 2006 BY CUI INC.