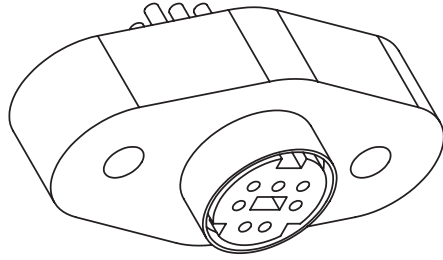
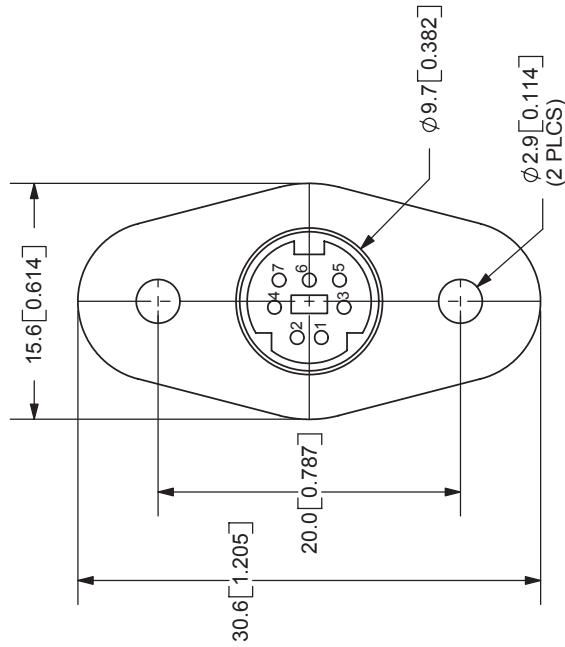
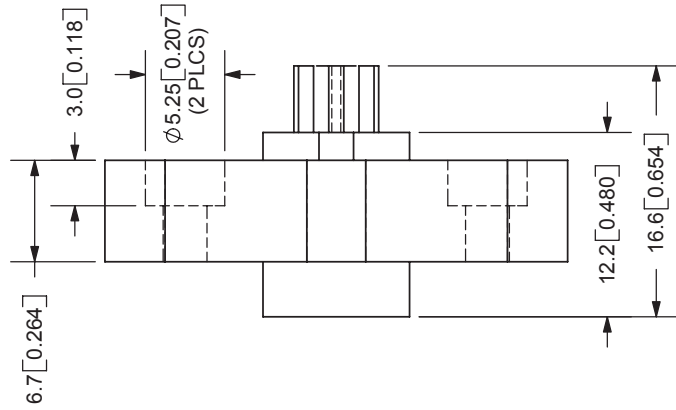


REV.	DESCRIPTION	DATE
A	NEW DRAWING	2/27/2006



TOLERANCE:
X.X ±0.05mm
X.XX ±0.05mm



CUI INC

20050 SW 112th Ave.
Tualatin, OR 97062
Phone: 503-643-4899
800-275-4899
Fax: 503-372-1266
Website: www.cui.com

SPECIFICATIONS:
RATING: 12V DC @ 2A
CONTACT RESISTANCE: 30m OHMS MAX
INSULATION RESISTANCE: 50M OHMS MIN: 250V DC
VOLTAGE WITHSTAND: 250V AC R.M.S. FOR 1 MINUTE
LIFE: 5,000 CYCLES
OPERATING TEMP: -5° ~ +115°C

TITLE:	PANEL MOUNT MINI DIN SOCKET	REV:	A
PART NO:	MD-70SP	UNITS:	MM [INCHES]
DRAWN BY:	ZRJ	APPROVED BY:	
		SCALE:	2:1

	MATERIAL	PLATING
SHELL	Brass	Nickel
PINS	Phosphor Bronze	Silver
BODY	ABS	
HOUSING	PBT	

PC FILE NAME: MD-70SP
COPYRIGHT 2006 BY CUI INC.