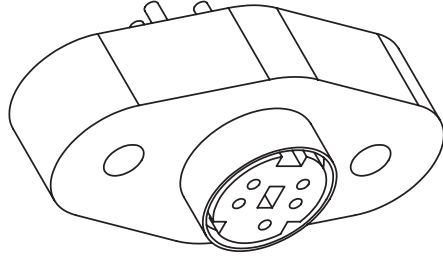
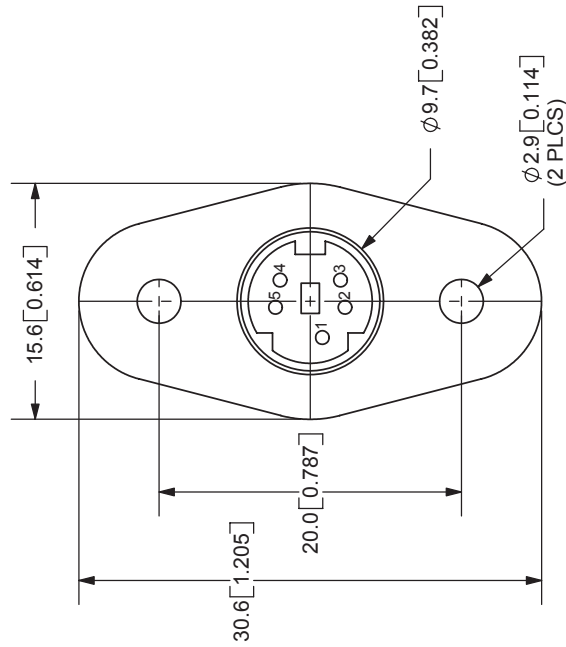
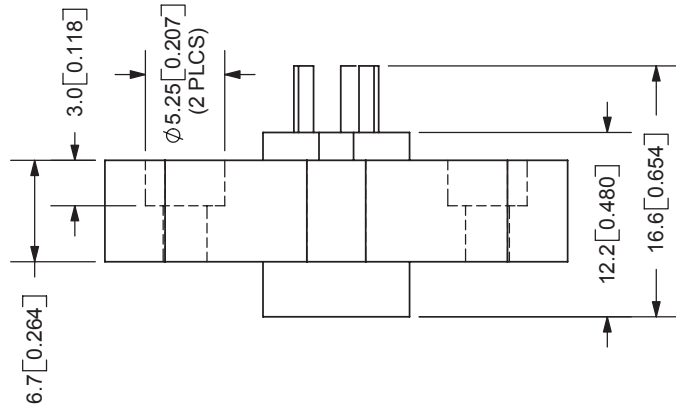


REV.	DESCRIPTION	DATE
A	NEW DRAWING	2/27/2006



TOLERANCE:  
X.X ±0.05mm  
X.XX ±0.05mm



**CUI INC**

20050 SW 112th Ave.  
Tualatin, OR 97062  
Phone: 503-643-4899  
800-275-4899  
Fax: 503-372-1266  
Website: www.cui.com

**SPECIFICATIONS:**  
RATING: 12V DC @ 2A  
CONTACT RESISTANCE: 30m OHMS MAX  
INSULATION RESISTANCE: 50M OHMS MIN: 250V DC  
VOLTAGE WITHSTAND: 250V AC R.M.S. FOR 1 MINUTE  
LIFE: 5,000 CYCLES  
OPERATING TEMP: -5° ~ +115°C

TITLE:	PANEL MOUNT MINI DIN SOCKET	REV:	A
PART NO:	MD-50SP	UNITS:	MM [INCHES]
DRAWN BY:	ZRJ	APPROVED BY:	
		SCALE:	2:1

	SHELL	PINS	BODY	HOUSING	MATERIAL	PLATING
					Brass	Nickel
					Phosphor Bronze	Silver
					ABS	
					PBT	

PC FILE NAME: MD-50SP  
COPYRIGHT 2006 BY CUI INC.