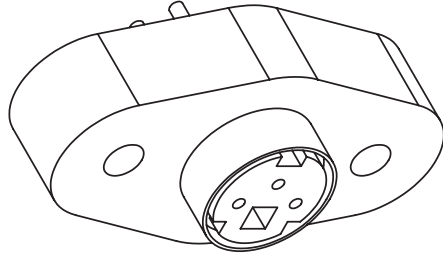
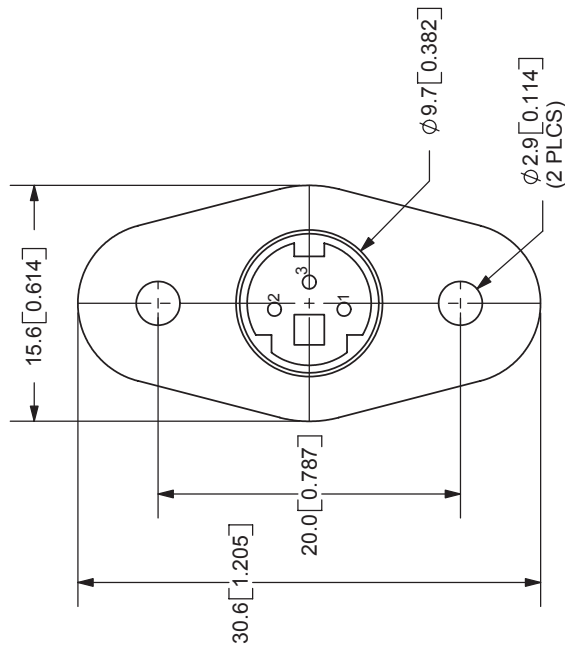
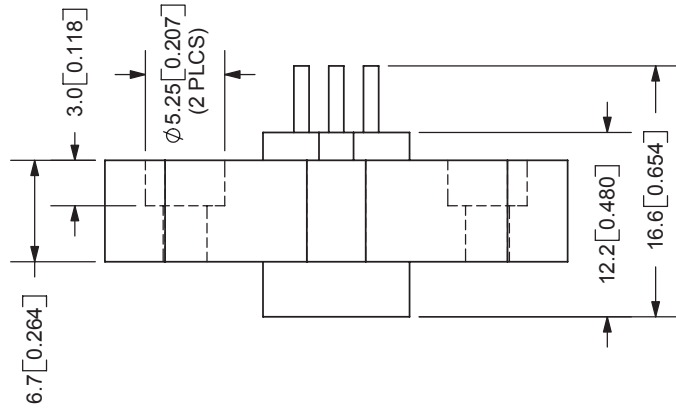


REV. A	DESCRIPTION NEW DRAWING	DATE 2/27/2006
-----------	----------------------------	-------------------



TOLERANCE:
X.X ±0.05mm
X.XX ±0.05mm



CUI INC

20050 SW 112th Ave.
Tualatin, OR 97062
Phone: 503-643-4899
800-275-4899
Fax: 503-372-1266
Website: www.cui.com

SPECIFICATIONS:
RATING: 12V DC @ 2A
CONTACT RESISTANCE: 30m OHMS MAX
INSULATION RESISTANCE: 50M OHMS MIN: 250V DC
VOLTAGE WITHSTAND: 250V AC R.M.S. FOR 1 MINUTE
LIFE: 5,000 CYCLES
OPERATING TEMP: -5° ~ +115°C

TITLE: PANEL MOUNT MINI DIN SOCKET	REV: A
PART NO: MD-30SP	UNITS: MM [INCHES]
DRAWN BY: ZRJ	APPROVED BY:
	SCALE: 2:1

SHELL	MATERIAL	PLATING
	Brass	Nickel
PINS	Phosphor Bronze	Silver
BODY	ABS	
HOUSING	PBT	

PC FILE NAME: MD-30SP
COPYRIGHT 2006 BY CUI INC.