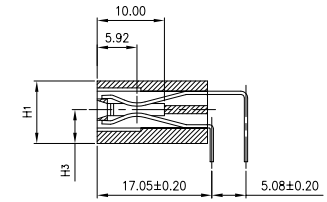
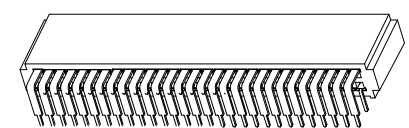
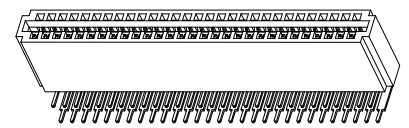
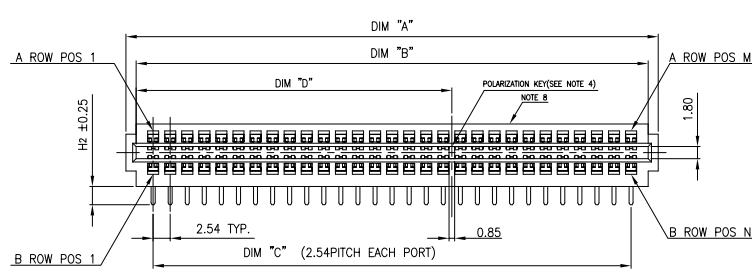
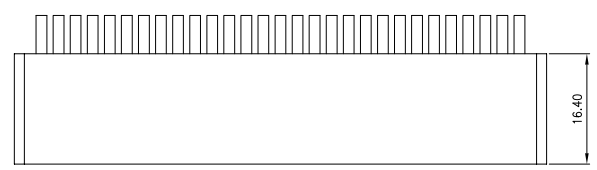




Copyright FCI

PRODUCT NO.
10035388-XXX
NOTE:5



- NOTE:
- MATERIAL:
HOUSING: HIGH TEMPERATURE THERMOPLASTIC,
UL 94 V-0 RATED, BLACK.
TERMINAL: HIGH CONDUCTIVITY COPPER ALLOY.
 - PRODUCT SPECIFICATION: GS-12-259.
 - PACKAGE SPECIFICATION: GS-14-937.
 - THERE IS NO POLARIZATION KEY IN 10035388-102/103/104/105/106/202/203/205/500/700/800/802.
 - PLATING SPEC:
10035388-XXX:
POWER PIN: CONTACT AREA- 30u" GOLD OVER 50u" NICKEL UNDER PLATED.
SOLDER TAIL- 100u" TIN/LEAD OVER 50u" NICKEL UNDER PLATED
AC TERMINAL: 50u" NICKEL UNDER PLATED; 30u" GOLD ON CONTACT AREA
10035388-XXXLF:
POWER PIN: CONTACT AREA- 30u" GOLD OVER 50u" NICKEL UNDER PLATED.
SOLDER TAIL- 100u" PURE MATTE TIN OVER 50u" NICKEL UNDER PLATED
AC TERMINAL: 50u" NICKEL UNDER PLATED; 30u" GOLD ON CONTACT AREA
 - P/N 10035388-XXXLF MEETS EUROPEAN UNION DIRECTIVE
AND OTHER COUNTRY REGULATIONS AS DESCRIBED IN GS-22-008.

- THE HOUSING WILL WITHSTAND EXPOSURE TO 260°C PEAK TEMPERATURE FOR 10 SECONDS IN A WAVE SOLDER APPLICATION WITH A CIRCUIT BOARD.
- MANUFACTURER'S NAME, P/N AND DATE CODE TO APPEAR ON THIS SURFACE AS PER GS-24-007.
- A Δ SYMBOL WILL BE NEXT TO ANY DIMENSION, VIEW, OR NOTE WHICH HAS BEEN MODIFIED WITH THE CURRENT DRAWING REVISION.

rev	ecn no	dr	date
T	DG10-0323	SM	2010-09-06
U	DG10-0334	WL	2010-09-20
V	DG10-0353	WL	2010-10-14
P	D008-0337	JW	2008-12-04
R	D009-0311	Junon	2009-09-18
S	DG10-0289	SM	2010-08-20

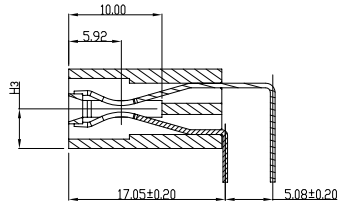
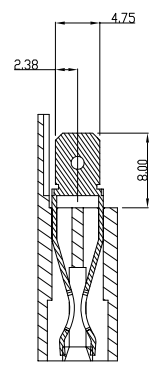
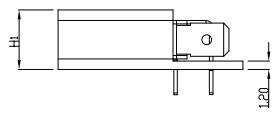
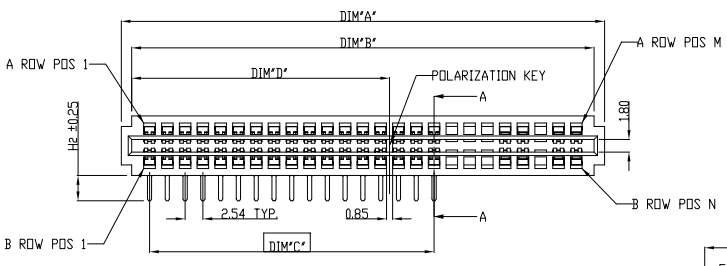
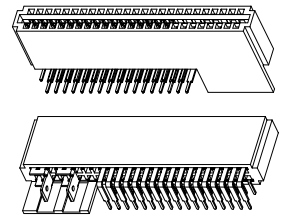
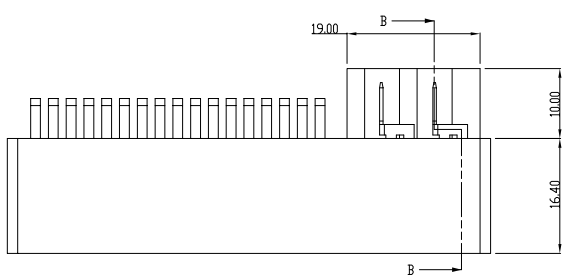
www.fciconnect.com		surface	tolerance std	projection	MM
Dr	LH	ANGULAR	0.X ± 0.25	size	A3
Eng	JULIA WANG	LINEAR	0.XX ± 0.15	Scale	NONE
Chr	GARY HSIEH	Product family	0.XXX ± 0.10	ECN	DG10-0353
Appr	JOSEPH HSIA	POWER EDGE CARD		Spec ref	
FCI		POWER EDGE CARD CONNECTOR	10035388	Rev.	V
catalog no		WITHOUT SIGNAL ASS'Y	CUSTOMER COPY	sheet 1 of 5	

REV F - 2008-04-17



Copyright FCI

PRODUCT NO.
10035388-600__
NOTE:5



NOTE:
(APPLY TO 10035388-600__ AS ADDITIONAL)
9. THE EMPTY POSITIONS ARE 18, 19, 20, 23.
10. THERE ARE 2 AC TERMINALS.

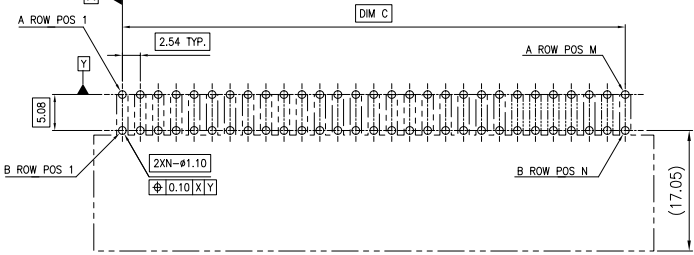
www.fciconnect.com			surface	tolerance std	projection	MM
			✓	TOLERANCES UNLESS OTHERWISE SPECIFIED	⊕	←
Dr	LH	2004-10-28	ANGULAR	0.x ± 0.25	size	Scale
Eng	JULIA WANG	2004-10-28	LINEAR	0.xx ± 0.15	A3	NONE
Chr	GARY HSIEH	2004-10-28	0° ± 2°	0.xxx ± 0.10	ECN	DG10-0353
Appr	JOSEPH HSIA	2004-10-28	Product family POWER EDGE CARD		Spec ref	
FCI			title POWER EDGE CARD CONNECTOR		chg 10035388	Rev. V
			WITHOUT SIGNAL ASS'Y		CUSTOMER COPY	sheet 2 of 5
			catalog no			

REV F - 2004-04-07

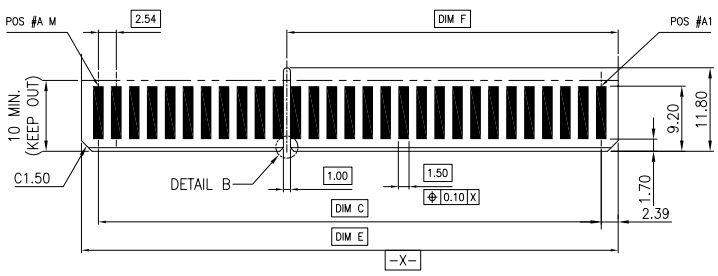


Copyright FCI.

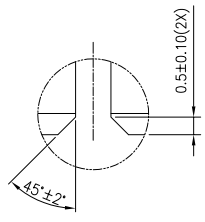
PRODUCT NO.
10035388-XXX__
NOTE:5



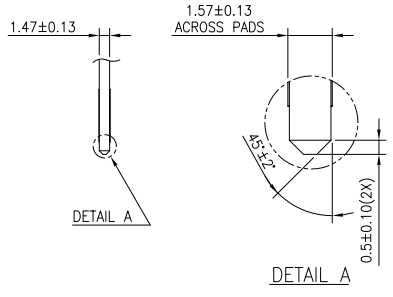
RECOMMENDED PCB LAYOUT



RECOMMENDED DAUGHTER CARD LAYOUT (TOP SIDE)



DETAIL B
SCALE 5:1



DETAIL A

DETAIL A

www.fciconnect.com			surface	tolerance std	projection	MM
Dr	LH	2004-10-28	ANGULAR	TOLERANCES UNLESS OTHERWISE SPECIFIED	size	Scale
Eng	JULIA WANG	2004-10-28	LINEAR	0.X ± 0.25	A3	NONE
Chr	GARY HSIEH	2004-10-28	Ø ± 2"	0.XXX ± 0.10	ECN	DG10-0353
Apr	JOSEPH HSIA	2004-10-28	Product family	POWER EDGE CARD	Spec ref	
FCI title			POWER EDGE CARD CONNECTOR		chg no	Rev.
WITHOUT SIGNAL ASS'Y			10035388		CUSTOMER COPY	V
catalog no			sheet 3 of 5			

REV F - 2008-04-17

