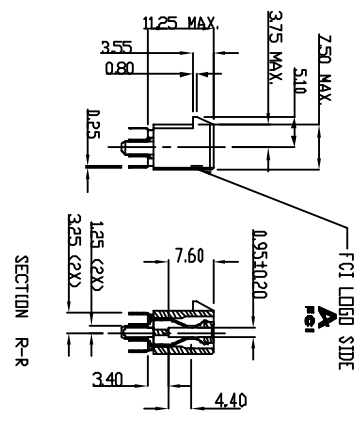
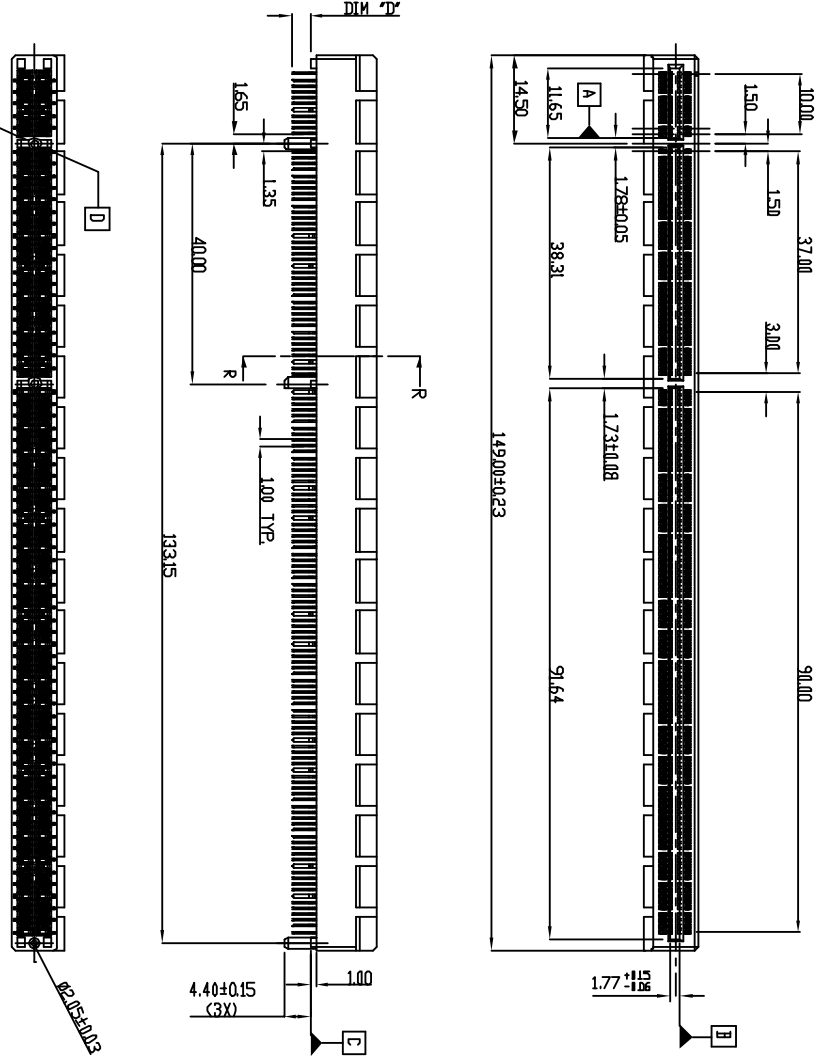


PROD. NO
SEE NOTE

1 | 2

3

4



Ø2.20±0.03 (2X)

D

FCI LEDD SIDE

A

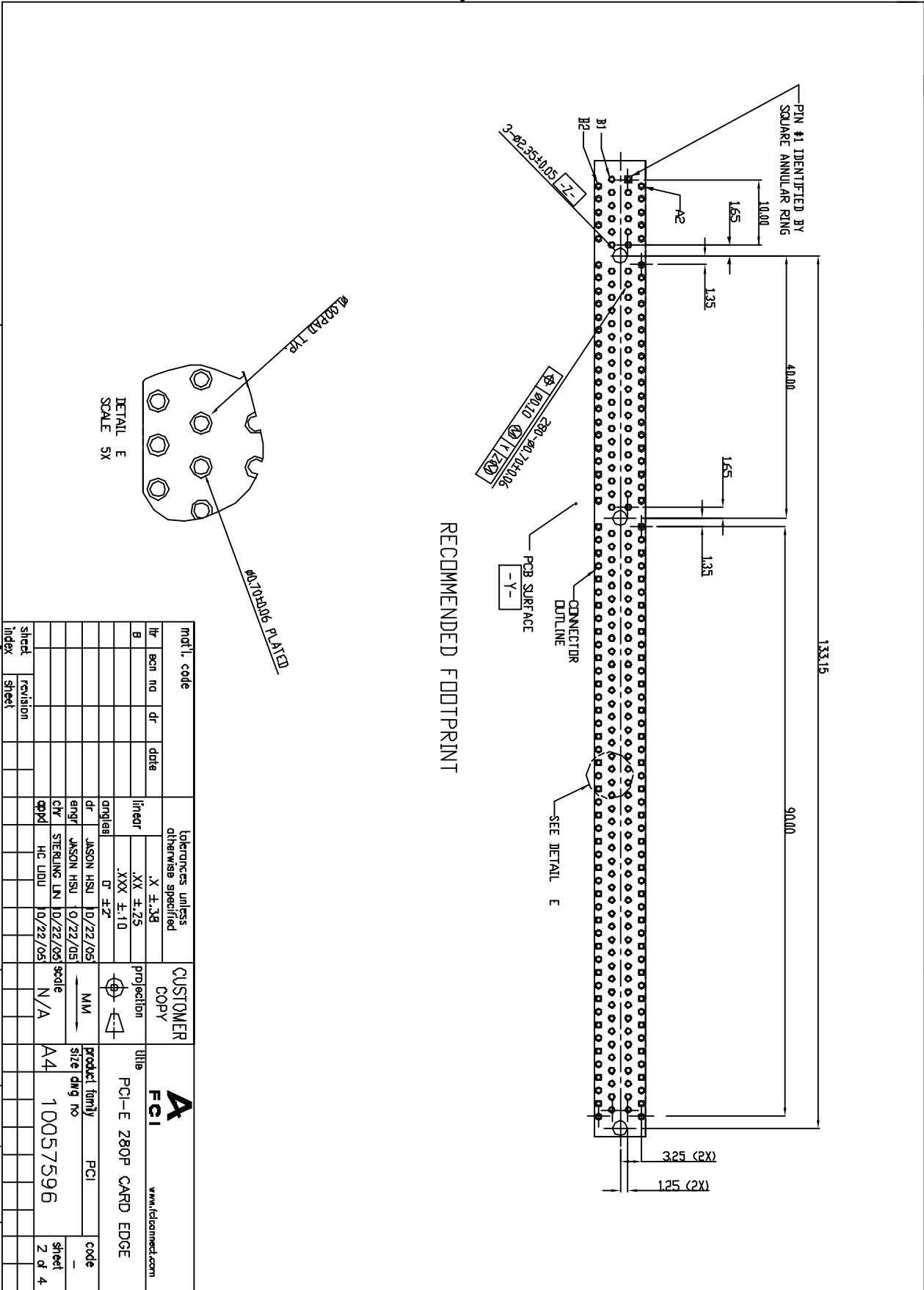
SECTION R-R

mod'l. code	tolerances unless otherwise specified				CUSTOMER COPY	FCI		www.fcimed.com	
lit. eon no. dr. date	X ±.38				projection	A			
A T05-0240 JH 0/22/05	.XX ±.25				MM	PCI-E 280P CARD EDGE			
B T05-0013 JH 1/18/06	.XXX ±.10				specie	PCI			
	dr. angles				dr. JASON HSU 10/22/05	product family		code	
	dr. JASON HSU 10/22/05				enrgt JASON HSU 10/22/05	size dwg no		sheet	
	chrg STERLING LIN 10/22/05				pppd HC LIU 10/22/05	A4		1 of 4	
street revision	B	B	B	B	specie N/A				
index sheet	1	2	3	4	code 10057596				
ACAD				code 22526				sheet 1 of 4	

1 | 2

3

4

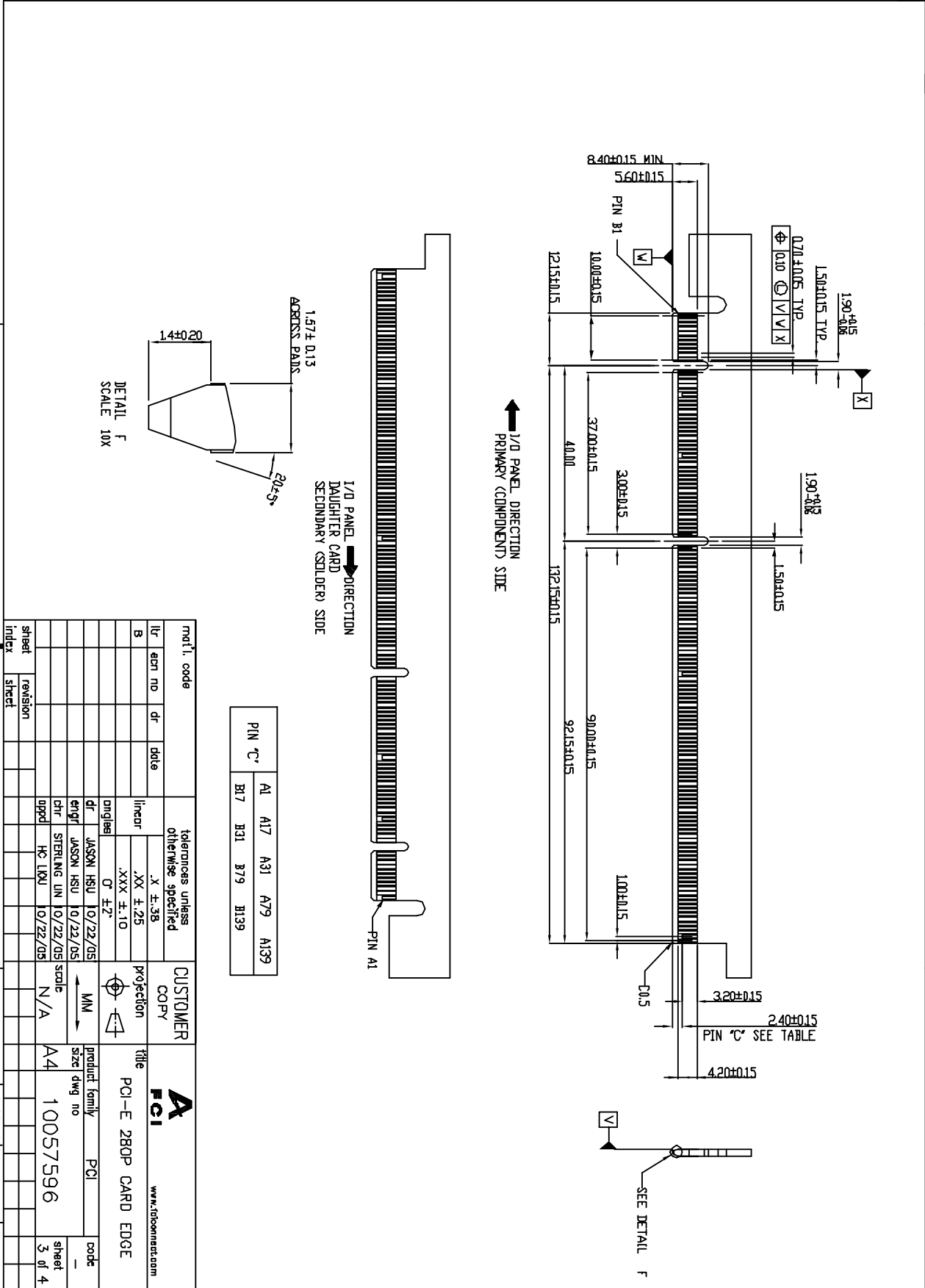


RECOMMENDED FOOTPRINT

matl. code	lot/nbrs unless otherwise specified	CUSTOMER COPY	title	product family	code
lot	.X F.38	projection	FCI	PCI-E Z80P CARD EDGE	
B	.XX ±.25	MM	www.fcimed.com		
	.XXX ±.10				
	D ±.2"				
	dr JASON HSU 10/22/05				
	engr JASON HSU 0/22/05				
	chr STERLING LIN 10/22/05				
	appr HC LDUU 10/22/05				
sheet	revision	scale	A4	10057596	sheet
index	sheet	N/A			Z of 4

ACAD

page code
22526



PIN 'C'	A1	A17	A31	A79	A139
	B17	B31	B79	B139	

mat'l. code	tolerances unless otherwise specified	CUSTOMER COPY	title
l/r	.X ±.38		PCI-E 280P CARD EDGE
B	.XX ±.25		
	.XXX ±.10		
	Ø ±Z		
dr	JASON HSU 10/22/05		
enqr	JASON HSU 10/22/05		
chr	STERLING LIN 10/22/05		
appd	HC LKJL 10/22/05		
sheet	revision	scale	product family
index	sheet	N/A	PCI
		A4	10057596
		3 of 4	

ACAD

code 22526



1 | 2

3

4

NOTES:
 1. MATERIAL: THERMOPLASTIC WITH GLASS FIBER, UL94V-0,
 HOUSING: GOLD IN BLACK,
 CONTACTS: COPPER ALLOY.

2. FINISH:
 CONTACTS: GOLD PLATING ON CONTACT AREA,
 100 U/MIN. TIN/LEAD OR MATTE TIN (LEAD FREE OPTION) PLATING ON SOLDER TAILS,
 50 U/MIN. NICKEL UNDERPLATING OVER ALL.

3. DURABILITY: 50 CYCLES.

4. ROHS COMPATIBLE PRODUCT SPECIFICATIONS

a. PLATING: "LF" MEANS THE PRODUCT IS LEAD FREE, 25um min. MATTE PURE TIN OVER 1.27um MIN. NICKEL UNDERPLATE.

b. MANUFACTURING PROCESS COMPATIBILITY: THE HOUSING WILL WITHSTAND EXPOSURE TO 260C+5C* SOLDER BATH TEMPERATURE FOR 5 SECONDS IN A WAVE SOLDER APPLICATION WITH A 157MM THICK CIRCUIT BOARD.

PRODUCT NUMBER CODE
 10057596 - X X X X X X X X X X

HOUSING COLOR OPTIONS
 1-BLACK

PEGS OPTIONS
 0-PLASTIC PEGS

TERMINAL PLATING OPTIONS
 0-50U" NI UNDERPLATE
 30U" Au CONTACT AREA
 100U" TIN TAIL AREA -----COMPATIBLE ROHS
 1-50U" NI UNDERPLATE
 15U" Au CONTACT AREA -----COMPATIBLE ROHS
 2-50U" N UNDERPLATE
 GOLD FLASH CONTACT AREA
 100U" TIN TAIL AREA -----COMPATIBLE ROHS

LEAD FREE

PACKAGING OPTIONS
 T-TRAY PACKAGING
 RESERVE

TAIL LENGTH OPTIONS

1	2	3
1	310	2364010
2	254	1564010

mat'l. code	dr	date	tolerances unless otherwise specified	CUSTOMER COPY	title	product family	code
B			X ±.38 .XX ±.25 .XXX ±.10	projection	PCI-E 280P CARD EDGE	PCI	
			0 ±.2	MNI			
			JASON HSU 10/22/05				
			enpl JASON HSU 07/22/05				
			chr STRILING LIN 10/22/05	scale			
			qpld HC LCU 10/22/05	N/A			
sheet	revision						
index	sheet						

ACAD

1 | 2

3

4

code code
 22526