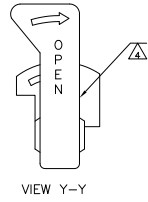
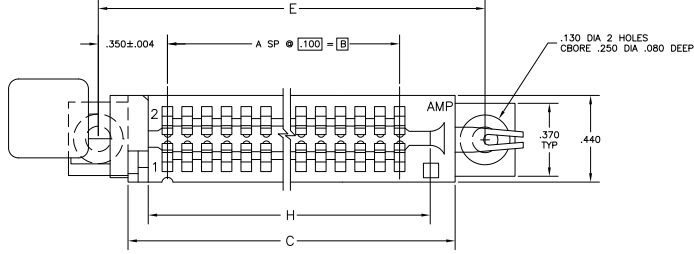
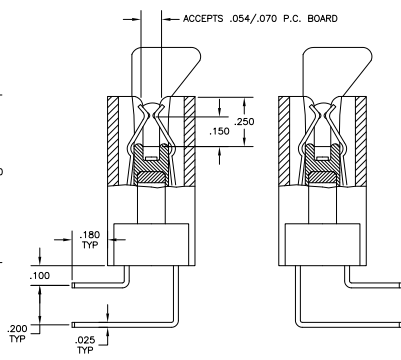
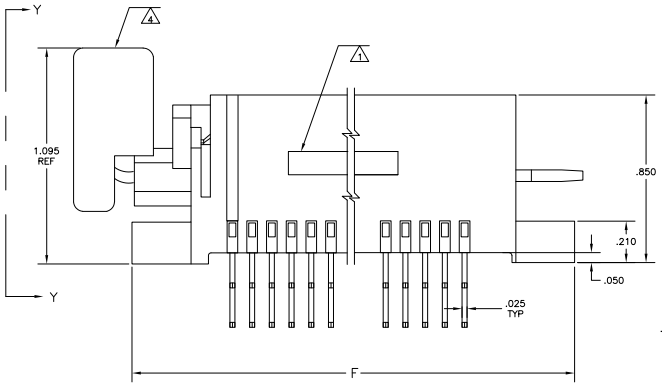


THIS DRAWING IS UNPUBLISHED  
 ALL RIGHTS RESERVED

| REV | DATE | DESCRIPTION               | BY     | CHK    |
|-----|------|---------------------------|--------|--------|
| AD  | 00   |                           |        |        |
| S   |      | REVISED PER ECO-06-022281 | DMOVIS | SS MM  |
| ST  |      | REVISED PER ECO-08-021510 | HOSEPH | KK AEG |



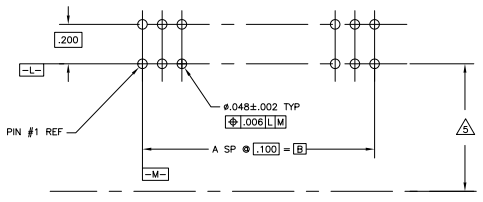
- △ PART NUMBER AND DATE CODE STAMPED IN THIS AREA ON EITHER SIDE.
- △ CONTACT: COPPER ALLOY  
HOUSING: GLASS FILLED POLYESTER 94 VO  
COLOR-BLACK  
CAM ROD: STAINLESS STEEL  
BOARD LOCK: GLASS FILLED POLYESTER 94 VO  
COLOR-YELLOW
- △ CONTACT: .00050 MIN NICKEL ALL OVER  
.000030 GOLD SELECTIVE PLATED IN CONTACT AREA TIN PLATED POST
- △ CAM ROD AND BOARD LOCK SHIPPED WITH EACH CONNECTOR. ROTATE IN DIRECTION OF ARROW TO OPEN.
- △ TO ASSURE PROPER CAM ORIENTATION THIS DIMENSION TO BE .400 MAX. FROM EDGE OF BOARD FOR LEFT BEND VERSION ONLY
- △ CONTACT: .00050 MIN NICKEL ALL OVER  
.000030 GOLD SELECTIVE PLATED IN CONTACT AREA MATTE TIN PLATED POST
- △ OBSOLETE PARTS: OBSOLETE CIS STREAMLINING PER D.RENAUD/D.SINISI



SECTION X-X  
 LEFT BEND  
 1-531396-1 THRU  
 2-531396-0  
 6-531396-8 △

SECTION X-X  
 RIGHT BEND  
 531396-1 THRU  
 1-531396-0  
 △ 5-531396-4 &  
 6-531396-0

|    |          |       |       |       |       |       |    |        |            |
|----|----------|-------|-------|-------|-------|-------|----|--------|------------|
| △△ | OBSOLETE | 5.100 | 5.900 | 5.600 | 5.300 | 4.900 | 49 | 50/100 | 6-531396-8 |
| △  |          | 6.600 | 7.400 | 7.100 | 6.800 | 6.400 | 64 | 65/130 | 6-531396-0 |
| △△ | OBSOLETE | 3.700 | 4.500 | 4.200 | 3.900 | 3.500 | 35 | 36/72  | 5-531396-4 |
|    | OBSOLETE | 6.600 | 7.400 | 7.100 | 6.800 | 6.400 | 64 | 65/130 | 2-531396-0 |
|    | OBSOLETE | 6.100 | 6.900 | 6.600 | 6.300 | 5.900 | 59 | 60/120 | 1-531396-9 |
| △  | OBSOLETE | 5.100 | 5.900 | 5.600 | 5.300 | 4.900 | 49 | 50/100 | 4-531396-8 |
|    | OBSOLETE | 4.400 | 5.200 | 4.900 | 4.600 | 4.200 | 42 | 43/86  | 1-531396-7 |
|    | OBSOLETE | 4.100 | 4.900 | 4.600 | 4.300 | 3.900 | 39 | 40/80  | 1-531396-5 |
|    | OBSOLETE | 3.700 | 4.500 | 4.200 | 3.900 | 3.500 | 35 | 36/72  | 1-531396-4 |
|    | OBSOLETE | 2.300 | 3.100 | 2.800 | 2.500 | 2.100 | 21 | 22/44  | 1-531396-1 |
|    |          | 6.600 | 7.400 | 7.100 | 6.800 | 6.400 | 64 | 65/130 | 1-531396-0 |
|    | OBSOLETE | 5.100 | 5.900 | 5.600 | 5.300 | 4.900 | 49 | 50/100 | 531396-8   |
|    | OBSOLETE | 4.100 | 4.900 | 4.600 | 4.300 | 3.900 | 39 | 40/80  | 531396-5   |
|    |          | 3.700 | 4.500 | 4.200 | 3.900 | 3.500 | 35 | 36/72  | 531396-4   |
|    | OBSOLETE | 2.300 | 3.100 | 2.800 | 2.500 | 2.100 | 21 | 22/44  | 531396-1   |



RECOMMENDED P.C. BOARD LAYOUT

THIS DRAWING IS A CONTROLLED DOCUMENT. IT IS THE PROPERTY OF Tyco Electronics Corporation, Harrisburg, Pa 17105-3008.

UNLESS OTHERWISE SPECIFIED, ALL DIMENSIONS ARE IN INCHES.

ROTORIC ZIF ASSEMBLY  
 .100 ± .002, RIGHT ANGLE  
 OPEN ONE END

SIZE DATE SIZE DRAWING NO. PART NO. REVISED TO

A1 00779 531396

CUSTOMER DRAWING