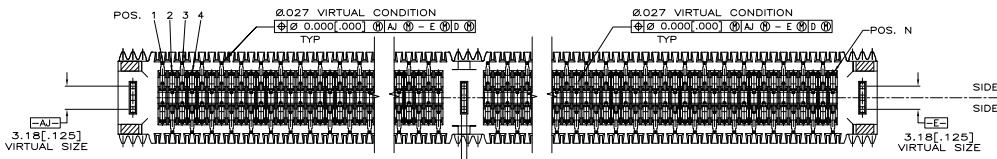
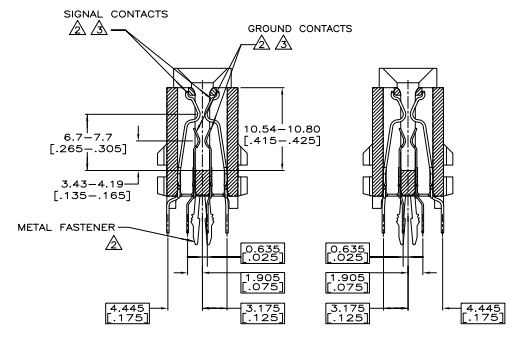
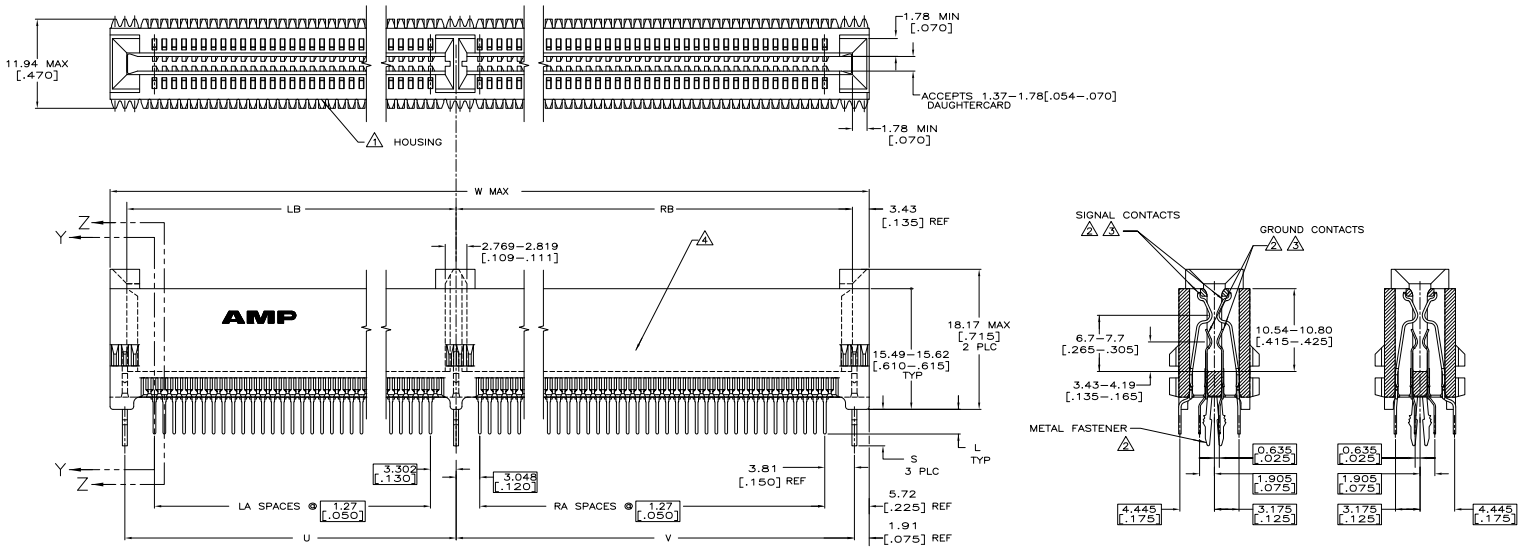


THIS DRAWING IS UNPUBLISHED
 UNLESS INDICATED OTHERWISE
 ALL RIGHTS RESERVED
 © 2007 AMP ELECTRONICS CORPORATION

REV	DATE	DESCRIPTION	BY	CHK	APP
AA	00				
B	02-07-024387				LAM PR
B1	REVISED PER E33-09-024927				07/06/09 KKK AEC



RC	RB	RA	LC	LB	LA	W	V	U	T	S	L	TOTAL QUANT POS. IN ORDER	PART NUMBER			
129.41	129.67-129.92	07	103.00	103.22-103.51	76	237.90	129.97-130.12	103.56-103.71	103.63	4.44-4.95	2.29-2.79	900	475	5-6145427-3		
(0.955)	(5.105-5.115)		(4.055)	(4.065-4.075)		(0.365)	(5.12-5.12)	(4.077-4.083)	(4.080)	(.175-.195)	(.090-.110)			4-6145427-1		
111.63	111.89-112.14	03	89.02	89.28-89.54	66	208.15	111.19-112.34	89.59-89.74	89.66	4.44-4.95	2.29-2.79	600	460	3-6145427-2		
(4.355)	(4.405-4.415)		(3.505)	(3.515-3.525)		(4.115)	(4.417-4.423)	(3.527-3.533)	(3.530)	(.175-.195)	(.090-.110)			2-6145427-5		
96.39	96.65-96.90	74	78.59	78.12-78.36	67	180.75	96.95-97.10	79.43-79.58	79.51	4.44-4.95	2.29-2.79	400	430	1-6145427-4		
(3.795)	(3.805-3.815)		(3.105)	(3.115-3.125)		(7.110)	(3.817-3.823)	(3.127-3.133)	(3.130)	(.175-.195)	(.090-.110)			0-6145427-6		
133.99	133.95-134.03	04	66.17	65.42-65.68	47	155.33	134.22-134.40	66.72-66.88	66.81	4.44-4.95	2.29-2.79	440	410	2-6145427-5		
(3.295)	(3.305-3.315)		(2.605)	(2.615-2.625)		(6.115)	(3.317-3.323)	(2.627-2.633)	(2.630)	(.175-.195)	(.090-.110)			1-6145427-7		
76.07	68.71-68.96	49	56.01	56.26-56.52	39	129.90	69.01-69.16	56.57-56.72	56.64	4.44-4.95	2.29-2.79	360	90	1-5145427-7		
(2.695)	(2.705-2.715)		(2.205)	(2.215-2.225)		(5.115)	(2.717-2.723)	(2.227-2.233)	(2.230)	(.175-.195)	(.090-.110)			360	90	1-5145427-9
55.75	55.01-55.26	39	43.31	43.56-43.82	29	104.25	55.31-55.46	43.87-44.02	43.84	4.44-4.95	2.29-2.79	280	70	5145427-9		
(2.195)	(2.205-2.215)		(1.705)	(1.715-1.725)		(4.115)	(2.217-2.223)	(1.727-1.733)	(1.730)	(.175-.195)	(.090-.110)			240	60	5145427-5
48.13	48.39-48.64		38.23	38.49-38.74	25	91.65	48.69-48.84	38.79-38.94	38.86	4.44-4.95	2.29-2.79					
(1.895)	(1.905-1.915)		(1.505)	(1.515-1.525)		(3.615)	(1.917-1.923)	(1.527-1.533)	(1.530)	(.175-.195)	(.090-.110)					

- MATERIAL: PCT, COLOR- BROWN.
- UPPER & LOWER CONTACT MATERIAL: PHOSPHOR BRONZE PER CDA C51100. FASTENER MATERIAL: BRASS
- CONTACT FINISH:
 ON MATING SURFACES-
 0.00076 [.000030] MIN GOLD PLATE OVER
 0.00127 [.000050] MIN NICKEL.
 ON SOLDER LEADS-
 0.00254 [.000100] MIN TIN.
 PART NUMBER AND DATE CODE MARKED ON THIS SURFACE.
 OBSOLETE PARTS: OBSOLETE CIS STREAMLINING PER D.RENAUD/D.SINISI

THIS DRAWING IS A CONTROLLED DOCUMENT.

AMP ELECTRONICS CORPORATION
 108-1863
 108-1863
 108-1863
 108-1863

CONNECTIONS: SEE NOTE 1, SEE NOTE 3

DATE: 01/07/09
 DRAWING NO: 5145427
 REV: 4.1

