

4

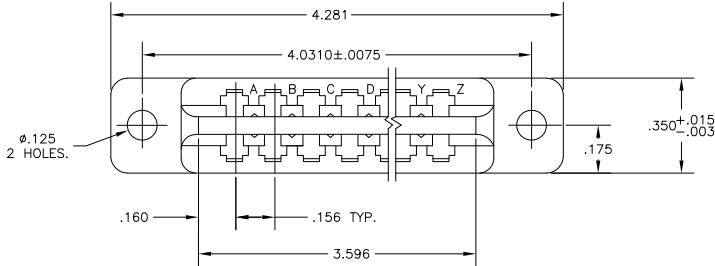
3

2

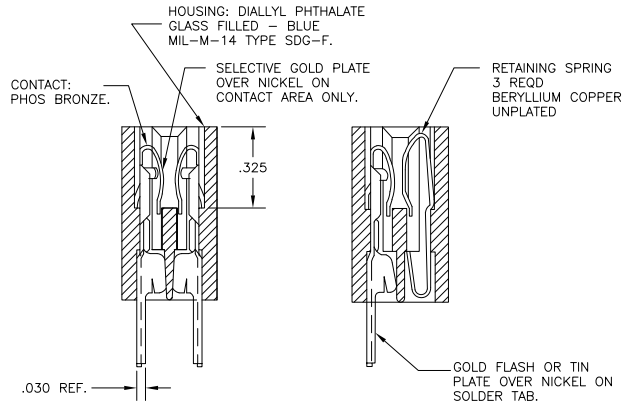
1

THIS DRAWING IS UNPUBLISHED. RELEASED FOR PUBLICATION
 © COPYRIGHT BY TYCO ELECTRONICS CORPORATION. ALL RIGHTS RESERVED.

LOC		DIBT		REVISIONS			
P	LTR	DESCRIPTION	DATE	BY	APPD		
H		REVISED PER ECO-11-005823	22MAR11	HMR	MM		



- BOARD THICKNESS .070-.055.
 - TAB WILL ACCOMMODATE A MAX. OF 2 # 16 SOLID WIRES OR A MAX. OF 2 # 18 STRANDED WIRES.
- ⚠ MATTE TIN PLATED CONTACT TAILS.



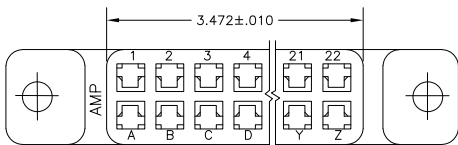
SECTION A-A
TYPE "X"
HOUSING FULLY LOADED
(BOTH SIDES)

SECTION A-A
TYPE "Y"
HOUSING LOADED ONE SIDE ONLY
RETAINING SPRING IN OPPOSITE
SIDE IN CAVITIES D,M,& W.

"AMP" ASSY NO. &
DATE CODE IN THIS
APPROX. AREA.

SOLDER TAB
FOR -1, -2

SPLIT TAIL
FOR -3, -4.



5-582776-1	X
582776-4	Y
582776-3	X
582776-2	Y
582776-1	X
PART NO	TYPE

THIS DRAWING IS A CONTROLLED DOCUMENT.		DRW	2052P47	Tyco Electronics Corporation	
DIMENSIONS: INCHES		M. SMITH	25JAN98	Harrisburg, Pa 17105-3608	
OTHER DIMENSIONS: MILLIMETERS		CHK	21FEB06	Tyco Electronics	
FINISH		APVD	NAME	CONNECTOR AMP LEAF, DUAL, 22 POS. WITH SOLDER TAB.	
MATERIAL		PRODUCT SPEC	APPLICATION SPEC	SIZE	CAGE CODE
SEE CALLOUT		WEIGHT	—	A2	00779
SEE CALLOUT		FINISH	—	C=	582776
CUSTOMER DRAWING		RESTRICTED TO	—	SCALE	4:1
				SHEET	1 of 1
				REV	H

AMP 1471-9 REV 31MM2000

582776

A