

4

3

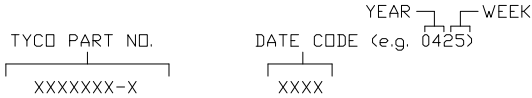
2

1

THIS DRAWING IS UNPUBLISHED. RELEASED FOR PUBLICATION  
 © COPYRIGHT - BY TYCO ELECTRONICS CORPORATION. ALL RIGHTS RESERVED.

LOC	DIST	REVISIONS				
P	LTR	DESCRIPTION	DATE	DWN	APVD	
GP	00	A	RELEASED	24MAY06	RG SF	

- 9. RECOMMENDED MOUNTING PCB 2.3 [0.93] MIN THK.
- 8. ITEMS PROVIDED TO THIS SPECIFICATION TO BE PERMANENTLY IDENTIFIED PER THE FOLLOWING IDENTIFIER:



- 7. RECOMMENDED PRESSING TOOL:  
 FIX00001 FOR PART NUMBER 6650494-1.  
 CONTACT TYCO FOR TOOLING DRAWINGS.
- 6. EXAMPLE PCB CONFIGURATION.
- 5. THIS CONFIGURATION WITH 3 SEGMENT POWER CONNECTOR (PN 6650383-X) IS SHOWN FOR REFERENCE ONLY. COMBINATION OF MULTIPLE NUMBERS OF 2 AND 3 SEGMENT MODULES COULD BE USED PER USER PREFERENCE. OVERALL COMBINATION SHOULD NOT EXCEED 8.0" IN LENGTH.
- 4. SOCKETS ACCEPT 1.6 [0.62] ±10% THICK PC BOARD.
- 3. FINISHES:  
 CONTACTS: SELECTIVE GOLD .000030" MIN THK. OVER NICKEL .000040" MIN THK.  
 TERMINALS: TIN .000100" MIN THK. OVER NICKEL .000040" MIN. THICK.

- 2. MATERIALS:  
 INSULATORS: THERMOPLASTIC, GLASS REINFORCED, COLOR-BLACK, UL94V-0 FLAMMABILITY RATED.  
 CONTACTS: PHOSPHOR BRONZE ALLOY

- 1. PART NUMBER CHANGES AND OR DESIGN CHANGES AFFECTING ITEM INTERCHANGEABILITY REQUIRE PRIOR TYCO APPROVAL AND AUTHORIZATION BY REVISION TO THIS DRAWING.

AS SHOWN	6650494-1
DESCRIPTION	PART NUMBER

THIS DRAWING IS A CONTROLLED DOCUMENT.		DWN	24MAY06	<b>tyco</b> <b>Electronics</b>	Tyco Electronics Corporation Harrisburg, PA 17105-3608	
DIMENSIONS: mm		CHK	24MAY06		NAME	SOCKET CONNECTOR, CROWNEDGE STRAIGHT, 3 SEGMENTS, 16 SIGNAL, COMPLIANT
TOLERANCES UNLESS OTHERWISE SPECIFIED:		APVD	24MAY06	PRODUCT SPEC	RESTRICTED TO	
0 PLC ± -		APPLICATION SPEC		SIZE	CAGE CODE	DRAWING NO
1 PLC ±.5 [.020]		WEIGHT		A3	00779	6650494
2 PLC ±.25 [.010]		CUSTOMER DRAWING		SCALE 2:1 SHEET 1 OF 4 REV A		
3 PLC ± -						
4 PLC ± -						
ANGLES ±.5						
MATERIAL						
FINISH						

4

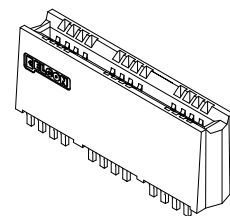
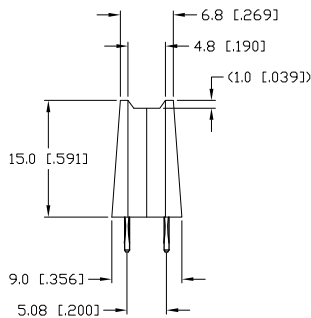
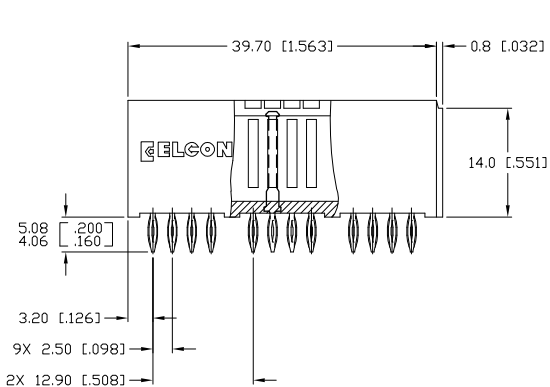
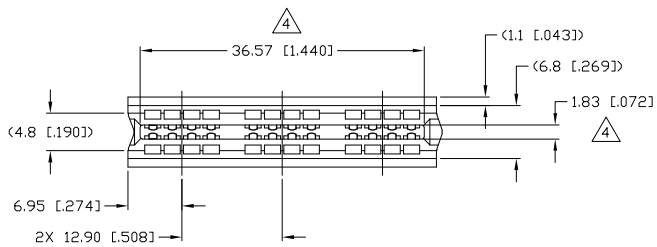
3

2

1

THIS DRAWING IS UNPUBLISHED. RELEASED FOR PUBLICATION  
 © COPYRIGHT - BY TYCO ELECTRONICS CORPORATION. ALL RIGHTS RESERVED.

LOC	DIST	REVISIONS				
P	LTR	DESCRIPTION	DATE	DWN	APVD	
GP	00	SEE SHEET 1	-	-	-	



THIS DRAWING IS A CONTROLLED DOCUMENT.		DWN R.GRZYBOWSKI 24MAY06	Tyco Electronics Corporation Harrisburg, PA 17105-3608																			
DIMENSIONS: mm		CHK S.FLICKINGER 24MAY06	NAME																			
TOLERANCES UNLESS OTHERWISE SPECIFIED:		APVD S.FLICKINGER 24MAY06	SOCKET CONNECTOR, CROWNEDGE STRAIGHT, 3 SEGMENTS, 16 SIGNAL, COMPLIANT																			
<table border="1"> <tr><td>0</td><td>PLC</td><td>± -</td></tr> <tr><td>1</td><td>PLC</td><td>± .5 [0.020]</td></tr> <tr><td>2</td><td>PLC</td><td>± .25 [0.010]</td></tr> <tr><td>3</td><td>PLC</td><td>± -</td></tr> <tr><td>4</td><td>PLC</td><td>± -</td></tr> <tr><td colspan="2">ANGLES</td><td>± .5</td></tr> </table>		0	PLC	± -	1	PLC	± .5 [0.020]	2	PLC	± .25 [0.010]	3	PLC	± -	4	PLC	± -	ANGLES		± .5	PRODUCT SPEC	SIZE	RESTRICTED TO
0	PLC	± -																				
1	PLC	± .5 [0.020]																				
2	PLC	± .25 [0.010]																				
3	PLC	± -																				
4	PLC	± -																				
ANGLES		± .5																				
MATERIAL	FINISH	APPLICATION SPEC	CAGE CODE																			
-	-	WEIGHT	DRAWING NO																			
CUSTOMER DRAWING			A3 00779 C-6650494																			
SCALE			2:1																			
SHEET			2 of 4																			
REV			A																			

AMP 1470-19 REV 31MAR2000

4

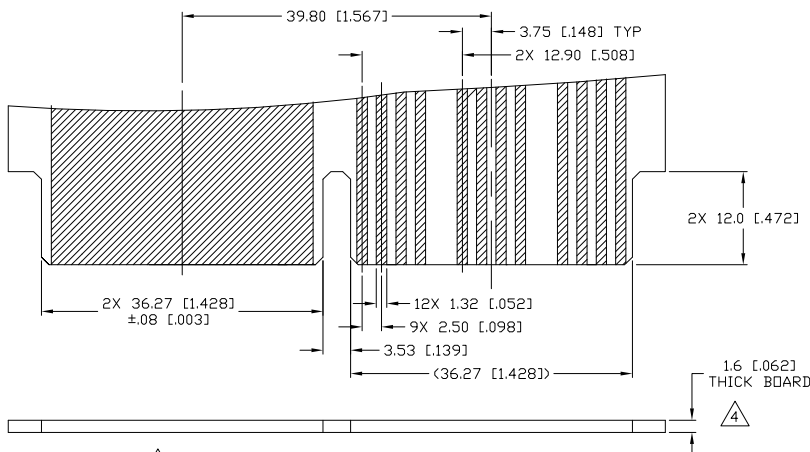
3

2

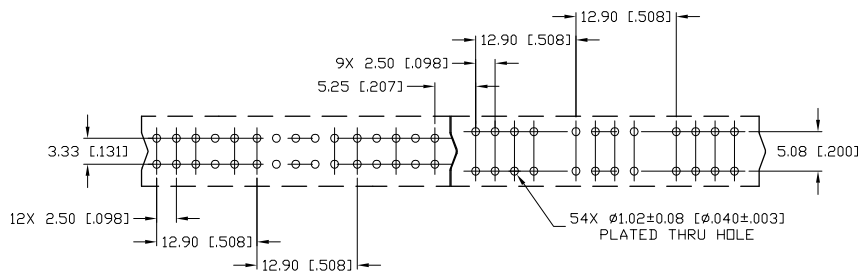
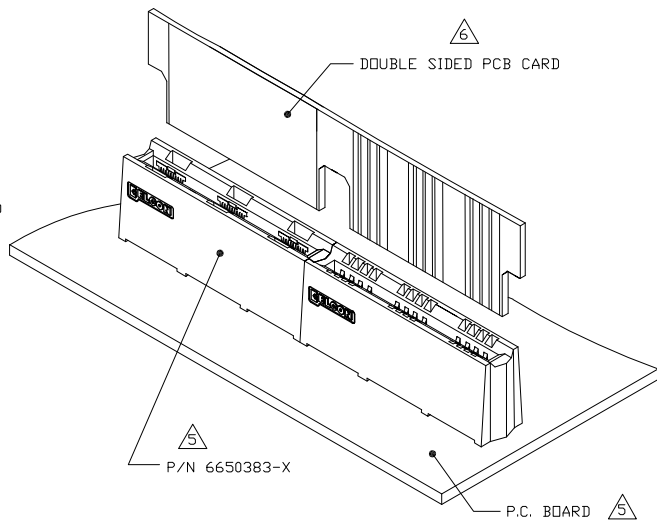
1

THIS DRAWING IS UNPUBLISHED. RELEASED FOR PUBLICATION  
 © COPYRIGHT - BY TYCO ELECTRONICS CORPORATION. ALL RIGHTS RESERVED.

LOC	DIST	REVISIONS			
P	LTR	DESCRIPTION	DATE	DWN	APVD
GP	00	SEE SHEET 1	-	-	-



△6 DOUBLE SIDED P.C.B. CARD



△5 RECOMMENDED P.C. BOARD LAYOUT

THIS DRAWING IS A CONTROLLED DOCUMENT.		DWN	24MAY06		Tyco Electronics Corporation Harrisburg, PA 17105-3608						
DIMENSIONS:		CHK	24MAY06		NAME	SOCKET CONNECTOR, CROWNEDGE STRAIGHT, 3 SEGMENTS, 16 SIGNAL, COMPLIANT					
mm		APVD	24MAY06			SIZE	CAGE CODE	DRAWING NO			
		0 PLC ± - 1 PLC ±.5 [.020] 2 PLC ±.25 [.010] 3 PLC ± - 4 PLC ± - ANGLES ±.5		WEIGHT		A3	00779	C-6650494	RESTRICTED TO		
MATERIAL		FINISH		CUSTOMER DRAWING		SCALE	2:1	SHEET	3 of 4	REV	A

4

3

2

1

THIS DRAWING IS UNPUBLISHED.

RELEASED FOR PUBLICATION

- - -

© COPYRIGHT -

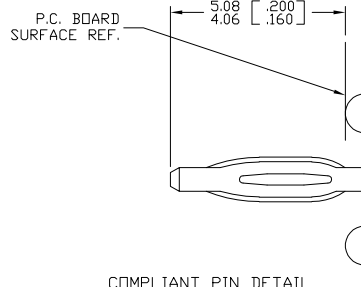
BY TYCO ELECTRONICS CORPORATION.

ALL RIGHTS RESERVED.

LOC  
GP 00

REVISIONS

P	LTR	DESCRIPTION	DATE	DWN	APVD
-	-	SEE SHEET 1	-	-	-



COMPLIANT PIN DETAIL  
 SCALE: 10 : 1  
 INSERTION/EXTRACTION FORCES  
 MAXIMUM PUSH IN: 133.3N PER PIN  
 [30 LBS]  
 MINIMUM PUSH OUT: 44.4N PER PIN  
 [10 LBS]

RECOMMENDED PRINTED CIRCUIT HOLE  
 COMPLIANT PRESS FIT  
 FINISHED HOLE:  $\phi 1.02$  [.040]  $\pm .08$  [.003]  
 DRILLED HOLE:  $\phi 1.15$  [.0453]  $\pm .013$  [.0005]  
 COPPER PLATE: .025 [.0010] MINIMUM (PER SURFACE)  
 TIN PLATE: .008 [.0003] MINIMUM (PER SURFACE)

THIS DRAWING IS A CONTROLLED DOCUMENT.		DWN R.GRZYBOWSKI 24MAY06	Tyco Electronics Corporation Harrisburg, PA 17105-3608															
DIMENSIONS: mm		CHK S.FLICKINGER 24MAY06	APVD S.FLICKINGER 24MAY06															
<table border="1"> <thead> <tr> <th colspan="2">TOLERANCES UNLESS OTHERWISE SPECIFIED:</th> </tr> </thead> <tbody> <tr> <td>0 PLC</td> <td><math>\pm .</math></td> </tr> <tr> <td>1 PLC</td> <td><math>\pm .5</math> [.020]</td> </tr> <tr> <td>2 PLC</td> <td><math>\pm .25</math> [.010]</td> </tr> <tr> <td>3 PLC</td> <td><math>\pm .</math></td> </tr> <tr> <td>4 PLC</td> <td><math>\pm .</math></td> </tr> <tr> <td>ANGLES</td> <td><math>\pm .5</math></td> </tr> </tbody> </table>		TOLERANCES UNLESS OTHERWISE SPECIFIED:		0 PLC	$\pm .$	1 PLC	$\pm .5$ [.020]	2 PLC	$\pm .25$ [.010]	3 PLC	$\pm .$	4 PLC	$\pm .$	ANGLES	$\pm .5$	NAME SOCKET CONNECTOR, CROWNEDGE STRAIGHT, 3 SEGMENTS, 16 SIGNAL, COMPLIANT		
TOLERANCES UNLESS OTHERWISE SPECIFIED:																		
0 PLC	$\pm .$																	
1 PLC	$\pm .5$ [.020]																	
2 PLC	$\pm .25$ [.010]																	
3 PLC	$\pm .$																	
4 PLC	$\pm .$																	
ANGLES	$\pm .5$																	
MATERIAL -		FINISH -		RESTRICTED TO -														
APPLICATION SPEC -		SIZE A3	CAGE CODE 00779	DRAWING NO C-6650494														
CUSTOMER DRAWING		SCALE 2:1		SHEET 4 OF 4														
				REV A														

AMP 1470-19 REV 31MAR2000