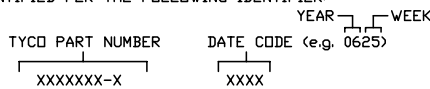


This drawing involves proprietary design rights of Tyco Electronics Corporation, and all design, manufacturing, reproduction, use and sale rights regarding the same are expressly reserved. It is submitted for a specific purpose and the recipient by accepting this drawing, assumes custody and control and agrees to take reasonable precautions to protect the drawing, will not be copied and reproduced in whole or in part, or for contents, revealed in any manner, or in any process, except to meet the purpose for which it was submitted and (b) that any errors, omissions or changes to this drawing will not be incorporated in other projects without the express written permission of Tyco Electronics Corporation.

REVISIONS			
EC	REV	DESCRIPTION	DATE
CPR	A	NEW RELEASE	07/26/06

7. ITEMS PROVIDED TO THIS SPECIFICATION TO BE PERMANENTLY IDENTIFIED PER THE FOLLOWING IDENTIFIER:



8. CONNECTOR INFORMATION

CONNECTOR	TERMINATION TYPE	PC TAIL LENGTH	RECOMMENDED MOUNTING BOARD	MATING BOARD
SOCKET	SOLDER TAIL (STANDARD)	5.08 [200] 4.06 [160]	3.2 [125] OR THINNER	1.6 [062] THICK

6. EXAMPLE PCB CONFIGURATION.

5. THIS CONFIGURATION WITH 3 SEGMENT POWER CONNECTOR IS SHOWN FOR REFERENCE ONLY. COMBINATION OF MULTIPLE NUMBERS OF 2 AND 3 SEGMENT MODULES COULD BE USED PER USER PREFERENCE. OVERALL COMBINATION SHOULD NOT EXCEED 8.0" IN LENGTH.

4. SOCKET CONNECTOR ACCEPT 1.6 [062]±10% THICK PCB.

3. FINISHES:

CONTACTS: SELECTIVE GOLD PLATED, .000030" MIN THICK
OVER NICKEL PLATED, .000050" MIN THICK

TERMINALS: TIN PLATED, MATTE FINISH, .000120" MIN THICK
OVER NICKEL PLATED, .000050" MIN THICK

2. MATERIALS:

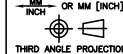


INSULATORS: THERMOPLASTIC, GLASS REINFORCED, COLOR-BLACK
UL94V-0 FLAMMABILITY RATED.

POWER CONTACTS: PHOSPHOR BRONZE ALLOY
COPPER ALLOY

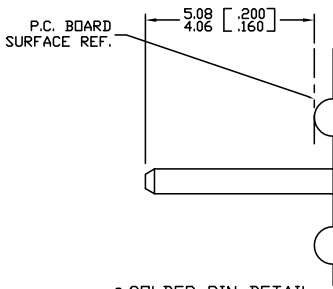
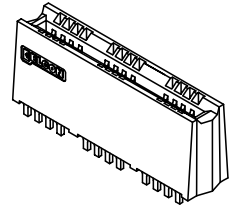
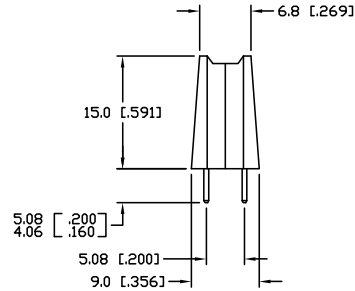
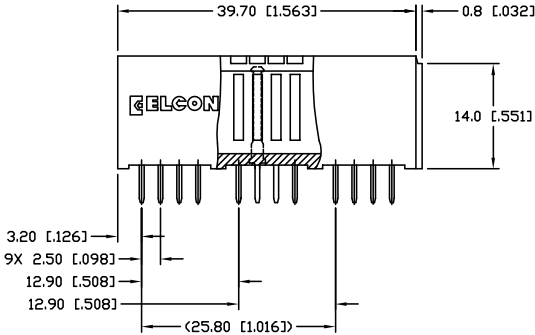
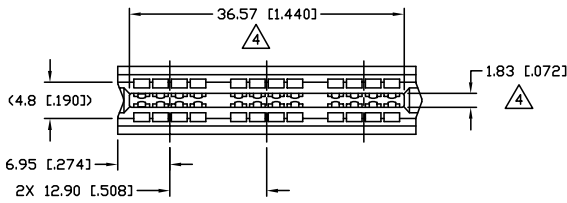
1. PART NUMBER CHANGES AND OR DESIGN CHANGES AFFECTING ITEM INTERCHANGEABILITY REQUIRE PRIOR TYCO APPROVAL AND AUTHORIZATION BY REVISION TO THIS DRAWING.

NOTES: UNLESS OTHERWISE SPECIFIED;

6651193-1	AS SHOWN
PART NUMBER	DESCRIPTION

 THIRD ANGLE PROJECTION UNLESS OTHERWISE SPECIFIED DIMENSIONS ARE IN METRIC [INCHES] TOLERANCES ANGLES ± .5° DECIMALS .XX ± .25 [.010] .X ± .5 [.020]	DRAWN HA NGUYEN	DATE 07/26/06	 Tyco Electronics Corporation Menlo Park, Ca 94025 
	CHECKED		
	APPROVED		
	APPROVED STEVE FLICKINGER	07/26/06	
	DCA APPROVED HA NGUYEN	07/26/06	TITLE CONNECTOR, SOCKET STANDARD, SOLDER TAIL CROWN EDGE SIZE DWG NUMBER B C = 6651193 REV. A
	ACAD FILE NUMBER	C6651193A.DWG	DWG SCALE 2=1 SH 1 OF 3

This drawing involves proprietary design rights of Tyco Electronics Corporation, and all design, manufacture, reproduction, use and sale rights regarding the same are expressly reserved. It is submitted for a specific purpose and the recipient by accepting this drawing, assumes custody and control and agrees to take reasonable precautions, (a) that this drawing will not be copied and reproduced in whole or in part, or its contents revealed in any manner, or in any process sought to meet the purpose for which it was submitted and (b) that any errors herein peculiar to this design will not be incorporated in other projects without the expressed written permission of Tyco Electronics Corporation.



9. SOLDER PIN DETAIL
SCALE: 10 : 1

10 SOLDER TERMINATION AREA

SCALE: 40 : 1
 RECOMMENDED PRINTED CIRCUIT HOLE
 FINISHED HOLE: $\phi 1.02 \pm 0.08$ [$\phi 0.040 \pm 0.003$]
 DRILLED HOLE: $\phi 1.15 \pm 0.013$ [$\phi 0.0453 \pm 0.0005$]
 COPPER PLATE: 0.025 [0.0010] MINIMUM (PER SURFACE)
 TIN PLATE: 0.008 [0.0003] MINIMUM (PER SURFACE)

REVISIONS			
EC	REV	DESCRIPTION	DATE
		SEE SHEET 1	

UNLESS OTHERWISE SPECIFIED DIMENSIONS ARE IN METRIC [INCHES] TOLERANCES ANGLES $\pm .5^\circ$ DECIMALS .XX $\pm .25$ [.010] .X $\pm .5$ [.020]	DRAWN HA NGUYEN CHECKED	DATE 07/26/06	Tyco Electronics Corporation Menlo Park, Ca 94025
	APPROVED STEVE FLICKINGER DCA APPROVED HA NGUYEN ACAD FILE NUMBER C6651193A.DWG	DATE 07/26/06	TITLE CONNECTOR, SOCKET STANDARD, SOLDER TAIL CROWN EDGE
			DWG NUMBER C = 6651193
			REV. A
			DWG SCALE 2=1 SH 2 OF 3

4 3 2 1

