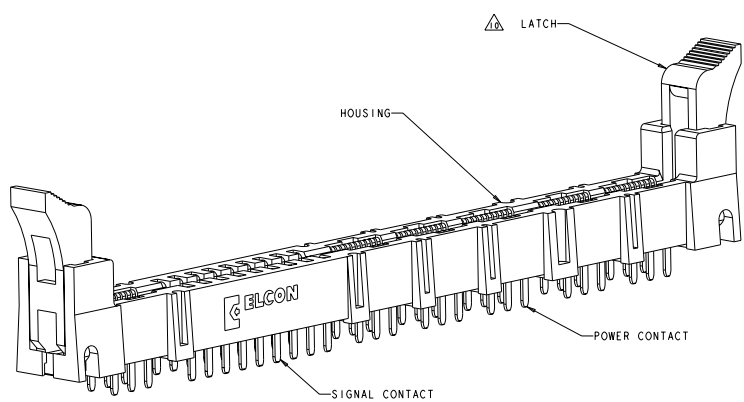


REV	DATE	DESCRIPTION	BY	CHK	APP
C		REV PER ECO-08-031660	BLUNDRON	RG	PD



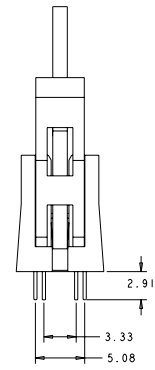
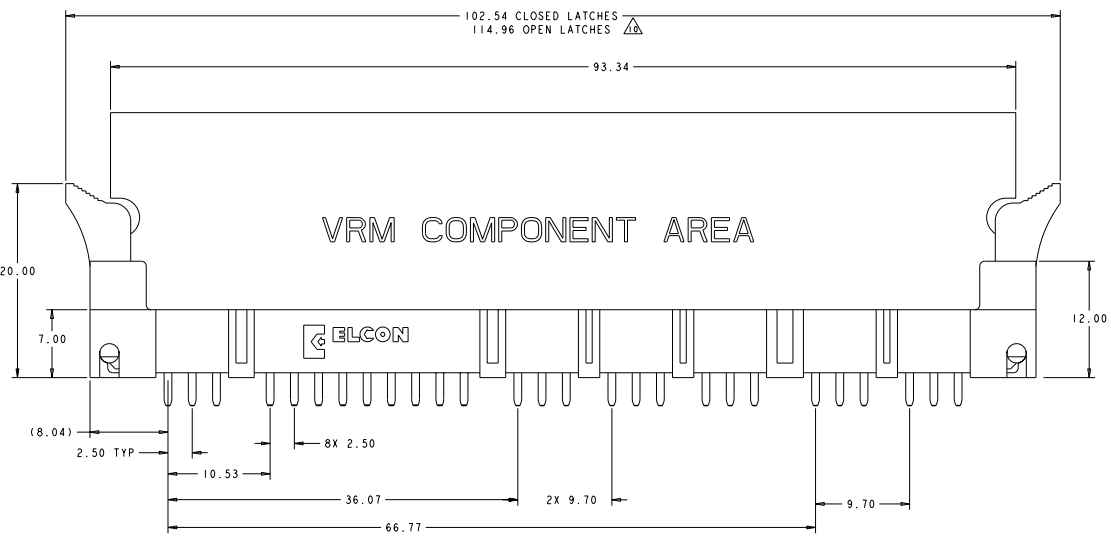
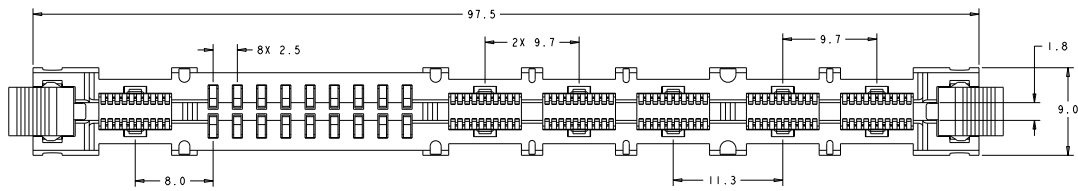
1. PART NUMBER CHANGES AND OR DESIGN CHANGES AFFECTING ITEM INTERCHANGEABILITY REQUIRE PRIOR TYCO ELECTRONICS APPROVAL AND AUTHORIZATION BY REVISION TO THIS DRAWING.
- △ MATERIAL:  
 HOUSING: GLASS FILLED POLYESTER, COLOR-BLACK  
 UL94V-0 FLAMMABILITY RATED  
 LATCHES: THERMOPLASTIC, GLASS REINFORCED  
 COLOR: BLACK, UL94V-0 FLAMMABILITY RATED  
 CONTACTS: COPPER ALLOY
- △ FINISH:  
 CONTACTS:  
 GOLD PLATE 0.76µm MIN THK. OVER  
 NICKEL 1.27µm MIN THK.  
 SOLDER TAILS - TIN PLATE 3.05µm MIN THK. OVER  
 NICKEL 1.27µm MIN THK.
4. ITEMS PROVIDED TO THIS SPECIFICATION TO BE PERMANENTLY IDENTIFIED WITH PART NUMBER AND DATE CODE.
- △ MAXIMUM BURR OF 0.013 ON CARD TAB AREA.
- △ SET TRACE BACK FROM PC BOARD EDGE. NO SOLDERMASK ALLOWED BETWEEN PC BOARD EDGE AND TRACE.
- △ CONNECTOR ACCEPTS 1.57±0.13 THICK PC BOARD.
- △ KEEP OUT AREA FOR COMPONENTS ONLY.
- △ FEATURE REQUIRED FOR USE WITH LATCH.
- △ CAUTION:  
 LATCHES ARE INTENDED FOR RETENTION OF PC BOARD TO CONNECTOR. DO NOT ATTEMPT TO FULLY EJECT PC BOARD FROM CONNECTOR WHILE DISENGAGING LATCHES, DAMAGE TO LATCHES AND OR CONNECTOR MAY OCCUR.
- △ RECOMMENDED GOLD FINGER LENGTH FOR RELIABLE CONTACT.
12. FOR DESIGN OBJECTIVES SEE 108-2301.
- △ RECOMMENDED PRINTED CIRCUIT HOLE:  
 FINISHED HOLE: Ø1.02 ±.08  
 DRILLED HOLE: Ø1.15 ±.013  
 COPPER PLATE: .025 MIN. (PER SURFACE)  
 TIN PLATE: .008 MIN (PER SURFACE)

AS SHOWN	1651929-1
DESCRIPTION	PART NO.

DATE: 08/03/00 DRAWN BY: J. J. JONES CHECKED BY: J. J. JONES APPROVED BY: J. J. JONES		DATE: 08/03/00 DRAWN BY: J. J. JONES CHECKED BY: J. J. JONES APPROVED BY: J. J. JONES		DATE: 08/03/00 DRAWN BY: J. J. JONES CHECKED BY: J. J. JONES APPROVED BY: J. J. JONES	
TITLE: SOCKET CONNECTOR ASSEMBLY SHORT TAILS W/LATCHES MC-PASS MINI CROWN EDGE		STATE: PA CASE CODE: 1651929 PART NO.: 1651929		DRAWING NO.: 1651929-1 SHEET: 1 OF 1	

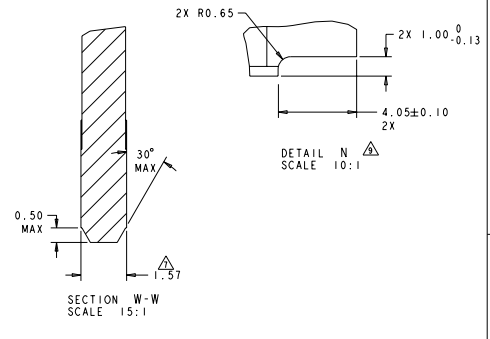
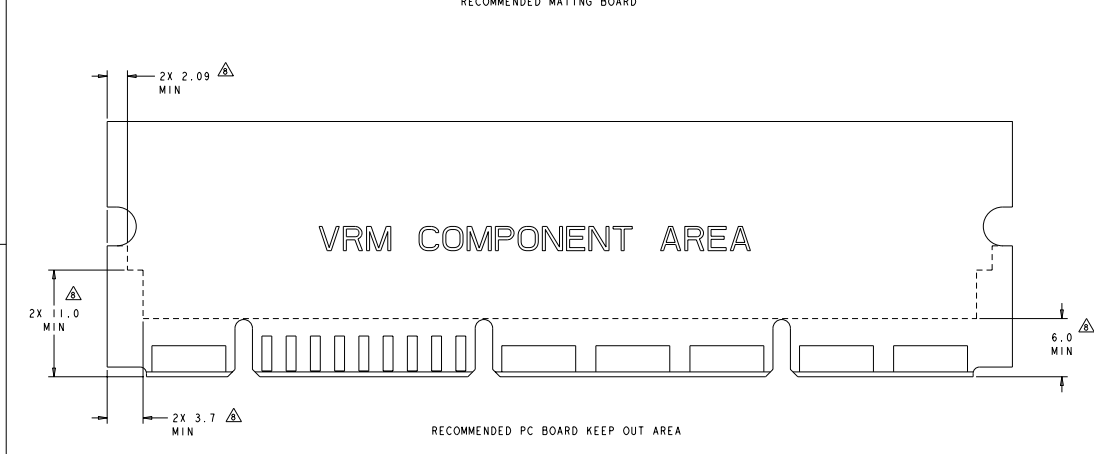
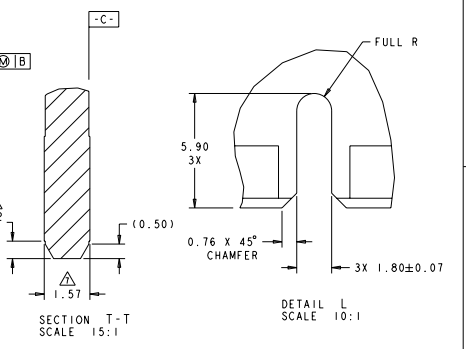
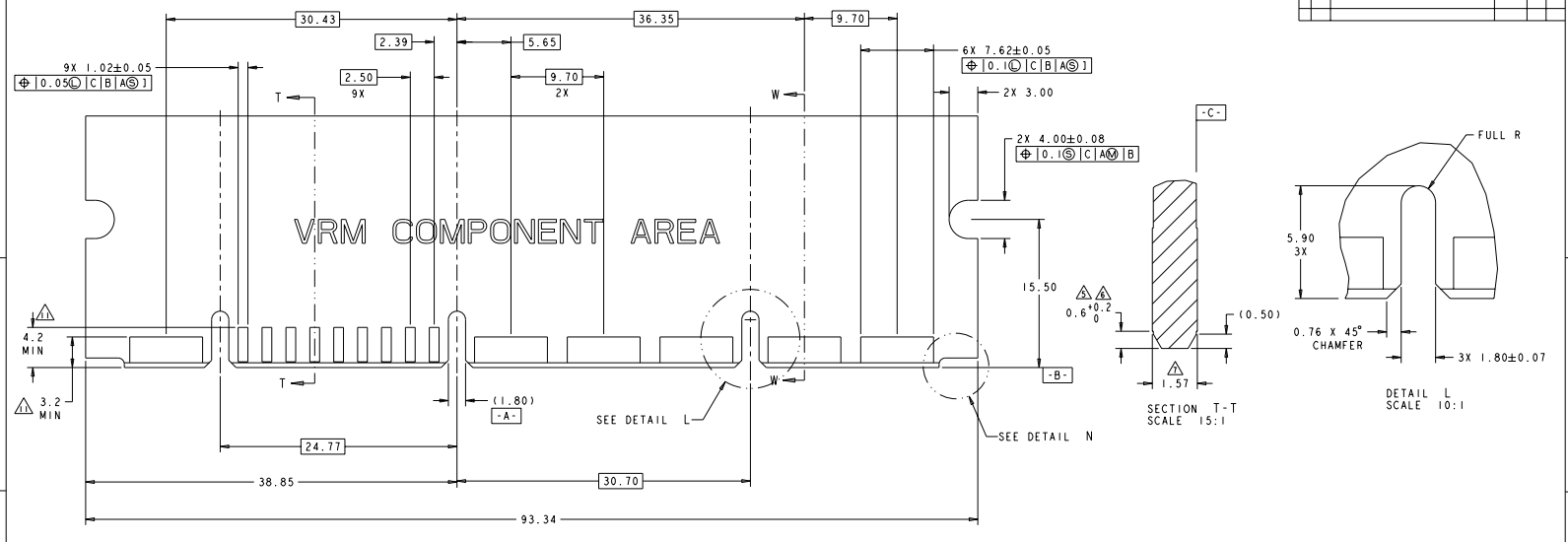
DATE SHOWN IN DIMENSIONS RECEIVED FOR FABRICATION  
 00 00000000 BY TECH ELECTRONICS CORPORATION ALL RIGHTS RESERVED

REV	DATE	REVISIONS	BY	CHK	APP
GP	00	SEE SHEET 1			



DATE: 00/00/00 BY: 00000000 CHECKED: 00000000 TITLE: CUSTOMER DRAWING		DESIGNED: 00000000 DRAWN: 00000000 CHECKED: 00000000 TITLE: CUSTOMER DRAWING		Tech Electronics Harrisburg, PA 17105-3600 <b>SOCKET CONNECTOR ASSEMBLY</b> SHORT TAILS W/ LATCHES MC-PASS MINI CROWN EDGE		STATE: PA SCALE: 1:1 SHEET: 2 OF 4
--	--	---	--	--	--	--

REV	DATE	DESCRIPTION	BY	CHK
00		SEE SHEET 1		

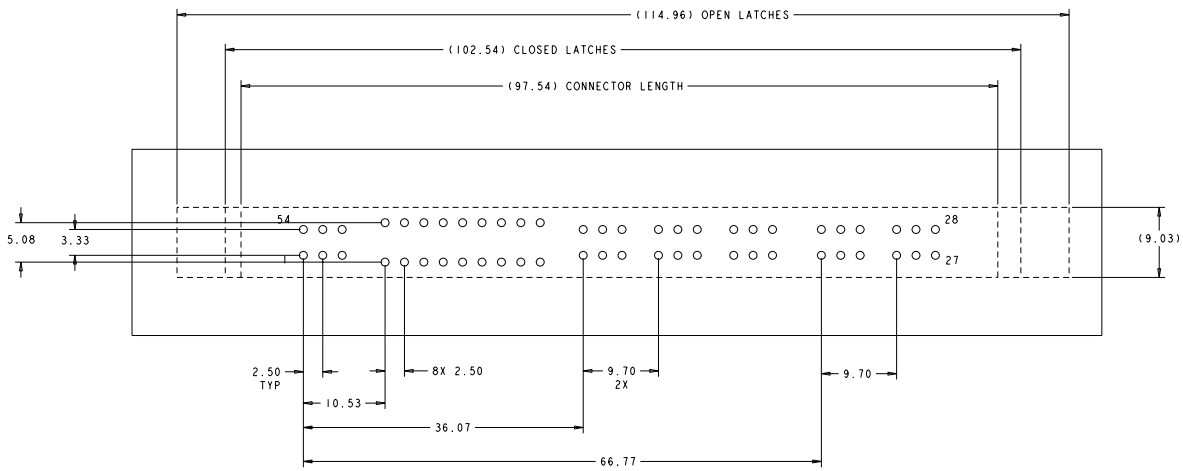


REV	DATE	DESCRIPTION	BY	CHK
00		SEE SHEET 1		

DATE	08/24/2018	BY	PDC ELECTRONICS CORPORATION
APP		CHK	
DESIGNER		DRW	
CHECKED		APP	
DATE		BY	
REV		DATE	

REV	DATE	DESCRIPTION	BY	CHK	APP
00		SEE SHEET 1			



RECOMMENDED P.C. BOARD GUIDELINE  
AS VIEWED FROM CONNECTOR SIDE

DATE: 0000-00-00 TIME: 00:00:00 USER:		DRAWN BY: [blank] CHECKED BY: [blank] DATE: 0000-00-00 TIME: 00:00:00 USER:		TITLE: SOCKET CONNECTOR ASSEMBLY SHORT TAILS W/LATCHES MC-PASS MINI CROWN EDGE	
PART NO: 00779		REV: A		DATE: 0000-00-00 TIME: 00:00:00 USER:	
CUSTOMER DRAWING		SCALE: 5:1		SHEET: 4 OF 4	