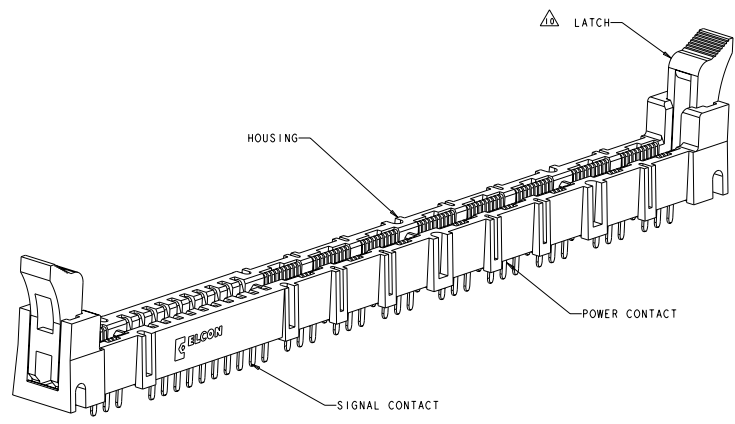


REV	DATE	DESCRIPTION	BY	CHK	APP
A	RELEASED		BLUMENB	RG	PD
B	REV PER ECO-99-027020		BLUMENB	RG	MS
B1	REV PER ECO-10-003574		CPANAMA	RG	MS

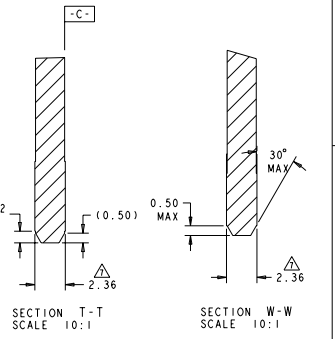
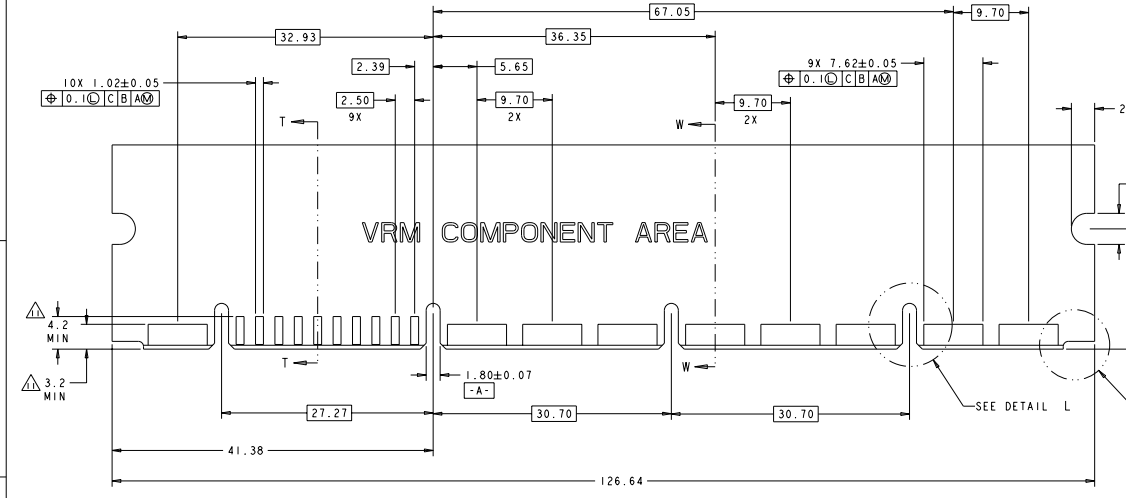


- PART NUMBER CHANGES AND OR DESIGN CHANGES AFFECTING ITEM INTERCHANGEABILITY REQUIRE PRIOR TYCO ELECTRONICS APPROVAL AND AUTHORIZATION BY REVISION TO THIS DRAWING.
- MATERIAL:**
 HOUSING: GLASS FILLED POLYESTER, COLOR-BLACK
 UL94V-0 FLAMMABILITY RATED
 LATCHES: THERMOPLASTIC, GLASS REINFORCED
 COLOR: BLACK, UL94V-0 FLAMMABILITY RATED
 CONTACTS: COPPER ALLOY
 - FINISH:**
 CONTACTS: GOLD PLATE 0.76µm MIN THK. OVER
 NICKEL 1.27µm MIN THK.
 SOLDER TAILS - TIN PLATE 3.05µm MIN THK. OVER
 NICKEL 1.27µm MIN THK.
- ITEMS PROVIDED TO THIS SPECIFICATION TO BE PERMANENTLY IDENTIFIED WITH PART NUMBER AND DATE CODE.
 - MAXIMUM BURR OF 0.013 ON CARD TAB AREA.
 - SET TRACE BACK FROM PC BOARD EDGE. NO SOLDERMASK ALLOWED BETWEEN PC BOARD EDGE AND TRACE.
 - CONNECTOR ACCEPTS 2.36±0.13 THICK PC BOARD.
 - KEEP OUT AREA FOR COMPONENTS ONLY.
 - FEATURE REQUIRED FOR USE WITH LATCH.
 - CAUTION: LATCHES ARE INTENDED FOR RETENTION OF PC BOARD TO CONNECTOR. DO NOT ATTEMPT TO FULLY EJECT PC BOARD FROM CONNECTOR WHILE DISENGAGING LATCHES. DAMAGE TO LATCHES AND OR CONNECTOR MAY OCCUR.
 - RECOMMENDED GOLD FINGER LENGTH FOR RELIABLE CONTACT.
- FOR DESIGN OBJECTIVES SEE 108-2301.
 - RECOMMENDED PRINTED CIRCUIT HOLE:
 - FINISHED HOLE: $\varnothing 1.02 \pm 0.08$
 - DRILLED HOLE: $\varnothing 1.15 \pm 0.13$
 - COPPER PLATE: 0.025 MIN. (PER SURFACE)
 - TIN PLATE: .008 MIN (PER SURFACE)
 - DATUMS AND BASIC DIMENSIONS ESTABLISHED BY CUSTOMER

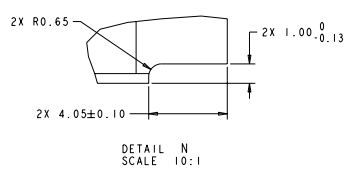
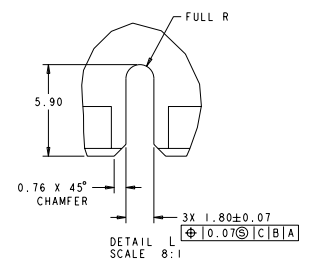
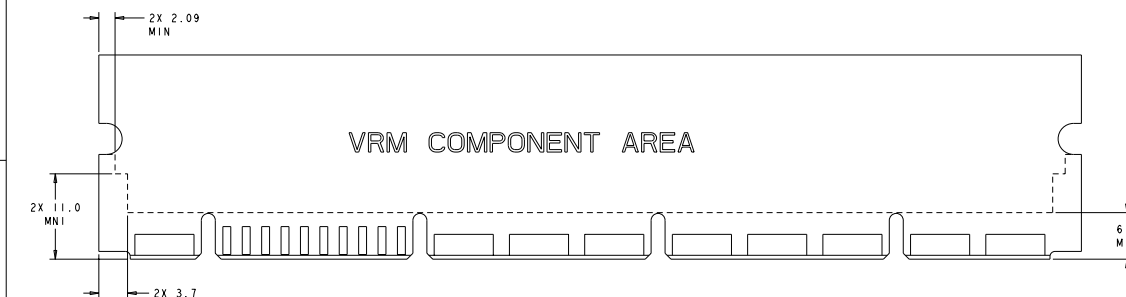
AS SHOWN	1651864-1
DESCRIPTION	PART NO.

DATE: 01/24/2009 TIME: 10:58:00 AM USER: JBLUMENB WORKDIR: C:\WORKDIR\1651864-1		DATE: 01/24/2009 TIME: 10:58:00 AM USER: JBLUMENB WORKDIR: C:\WORKDIR\1651864-1	
SHEET NO: 1 TOTAL SHEETS: 1	PART NO: 1651864-1 REV: A	TITLE: SOCKET CONNECTOR ASSEMBLY WITH LATCHES MC-P8510	CUSTOMER DRAWING: YES

REV. NO.		REVISIONS	
DATE	BY	DESCRIPTION	APP'D
00	GP	SEE SHEET 1	



RECOMMENDED MATING BOARD



DATE: 01/20/2009 DRAWN BY: J. BUCHHEIT CHECKED BY: J. BUCHHEIT TITLE: SOCKET CONNECTOR ASSEMBLY W/LATCHES MC-P8510	DATE: 01/20/2009 DRAWN BY: J. BUCHHEIT CHECKED BY: J. BUCHHEIT TITLE: SOCKET CONNECTOR ASSEMBLY W/LATCHES MC-P8510	DATE: 01/20/2009 DRAWN BY: J. BUCHHEIT CHECKED BY: J. BUCHHEIT TITLE: SOCKET CONNECTOR ASSEMBLY W/LATCHES MC-P8510
---	---	---

