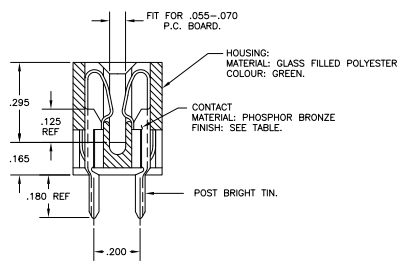
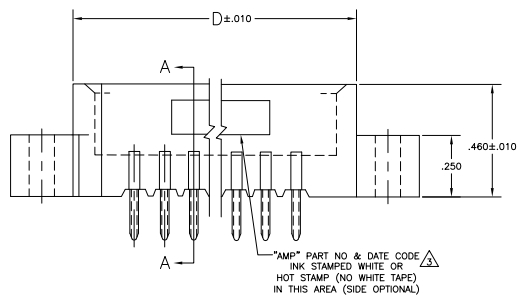
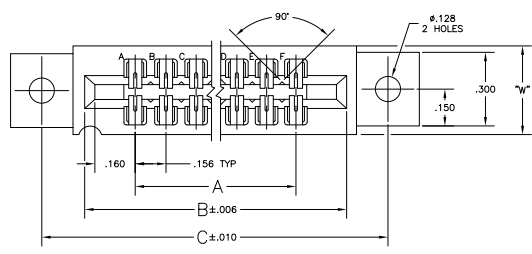


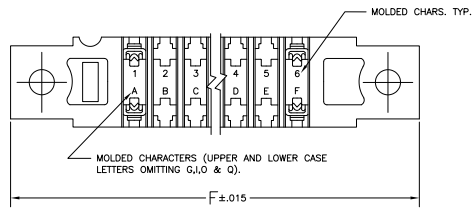
THIS DRAWING IS UNPUBLISHED
 ALL RIGHTS RESERVED

REV	DATE	BY	CHK	REVISIONS
AD	00			
L	800-09-00835			28MAM06 BSV MK
L1	REV PER EDO-09-021510			10SEP09 KK AEG



SECTION A-A

- △ .000015 MIN GOLD OVER .000050 MIN. NICKEL IN CONTACT AREA.
- △ .000030 MIN GOLD OVER .000050 MIN. NICKEL IN CONTACT AREA.
- △ ALL PARTS ASSEMBLED IN MEXICO MUST BE STAMPED "ASSY IN MEXICO" THE WORD "MEXICO" CAN BE SUBSTITUTED ONLY WHERE PART SIZE PROHIBITS STAMPING "ASSY IN MEXICO", INK STAMP COLOR WHITE OR HOT STAMP (NO WHITE TAPE) PER 115-9009, APPROX WHERE SHOWN, SIDE OPTIONAL.
- △ MATTE TIN PLATED CONTACT TAILS.
- △ OBSOLETE PARTS: OBSOLETE CIS STREAMLINING PER D.RENAUD/D.SINISI



△ PART NO	NO. OF POSITION	A	B	C	D	W	F	△ PART NO	
△ OBSOLETE	-	43	6.552	6.872	7.307	7.012	4.37	7.557	8-530656-3
△ OBSOLETE	-	28	4.212	4.532	4.967	4.672	.370	5.217	8-530656-2
△ OBSOLETE	-	25	3.744	4.064	4.499	4.204	.370	4.749	7-530656-8
△ OBSOLETE	-	22	3.276	3.596	4.031	3.736	.370	4.281	7-530656-6
△ OBSOLETE	-	10	1.404	1.724	2.159	1.864	.370	2.409	7-530656-2
1-530656-3	43	6.552	6.872	7.307	7.012	4.37	7.557	3-530656-3	
1-530656-2	28	4.212	4.532	4.967	4.672	.370	5.217	3-530656-2	
1-530656-1	44	6.708	7.028	7.463	7.168	.437	7.713	3-530656-1	
1-530656-0	36	5.460	5.780	6.215	5.920	.437	6.465	3-530656-0	
530656-9	30	4.524	4.844	5.279	4.984	.437	5.529	2-530656-9	
530656-8	25	3.744	4.064	4.499	4.204	.370	4.749	△ 2-530656-8	
530656-7	34	3.588	3.908	4.343	4.048	.370	4.593	2-530656-7	
530656-6	22	3.276	3.596	4.031	3.736	.370	4.281	2-530656-6	
530656-5	18	2.652	2.972	3.407	3.112	.370	3.657	2-530656-5	
530656-4	15	2.184	2.504	2.939	2.644	.370	3.189	2-530656-4	
530656-3	12	1.716	2.036	2.471	2.176	.370	2.721	2-530656-3	
530656-2	10	1.404	1.724	2.159	1.864	.370	2.409	△ 2-530656-2	
530656-1	6	.780	1.100	1.535	1.240	.370	1.785	2-530656-1	

THIS DRAWING IS A CONTROLLED DOCUMENT.

MEASUREMENTS: DIMENSIONS IN MILLIMETERS

DATE: 10/07/79

PROJECT: HOUSING ASSY, LOW PROFILE, EDGE CONNECTION, FLOW SOLDER, FOR .052 DIA. HOLE, 156X.000 CTS.

SIZE: A1

DATE: 10/07/79

DRAWING NO: 530656

CUSTOMER DRAWING

SCALE: 4:1

SHEET: 1 OF 1