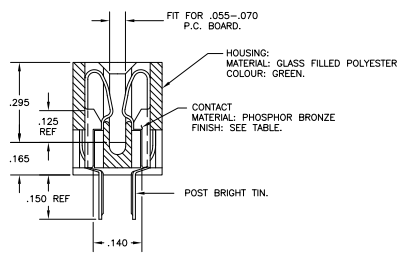
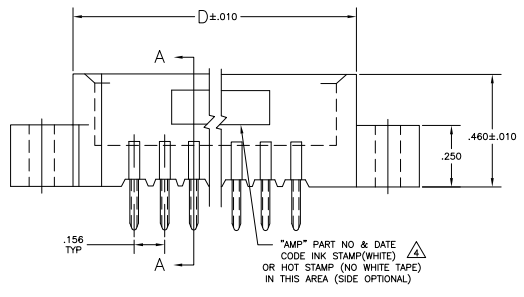
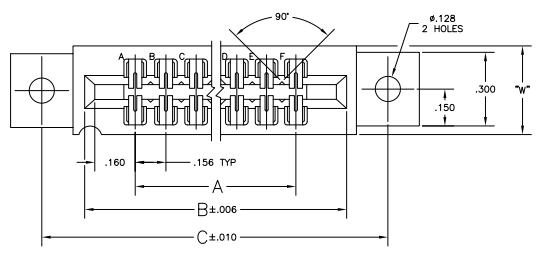
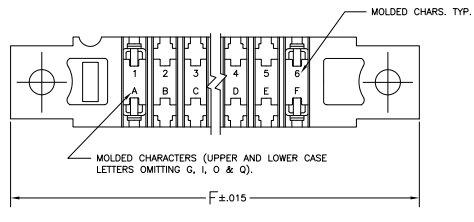


REV	DATE	DESCRIPTION	BY	CHK
AD	00			
P	02-07-012860		RB	MM
PT	REV PER: 020-09-081510		1056909	KK AEC



SECTION A-A

- △ .000015 MIN GOLD OVER .000050 MIN. NICKEL IN CONTACT AREA.
- △ .000030 MIN GOLD OVER .000050 MIN. NICKEL IN CONTACT AREA.
- △ NO STAMPING ON 1-530657-4 AND 3-530657-4.
- △ ALL PARTS ASSEMBLED IN MEXICO MUST BE STAMPED "ASSY IN MEXICO" THE WORD "MEXICO" CAN BE SUBSTITUTED ONLY WHERE PART SIZE PROHIBITS STAMPING "ASSY IN MEXICO", INK STAMP COLOR WHITE OR HOT STAMP (NO WHITE TAPE) 115-9009, APPROX WHERE SHOWN, SIDE OPTIONAL.
- △ MATTE TIN PLATED CONTACT TAILS.
- △ OBSOLETE PARTS: OBSOLETE CIS STREAMLINING PER D.RENAUD/D.SINISI



△ OBSOLETE	△ OBSOLETE	△ OBSOLETE	△	1-530657-4	1-530657-3	1-530657-2	1-530657-1	1-530657-0	530657-9	530657-8	530657-7	530657-6	530657-5	530657-4	530657-3	530657-2	530657-1
-	-	-	22	3.376	3.596	4.031	3.736	4.281	3.529	4.749	4.204	3.70	4.281	3.189	2.537	2.409	1.785
43	28	15	22	28	44	36	30	25	24	22	18	15	12	10	6		
6.552	4.212	2.184	3.376	4.212	6.708	5.460	4.524	3.744	3.580	3.276	2.652	2.184	1.716	1.404	.780		
6.872	4.532	2.504	3.596	4.532	7.028	5.780	4.844	4.064	3.908	3.596	2.972	2.504	2.036	1.724	1.100		
7.307	4.967	2.939	4.031	4.967	7.463	6.215	5.279	4.499	4.343	4.031	3.407	2.939	2.471	2.159	1.535		
7.012	4.672	2.644	3.736	4.672	7.168	5.920	4.984	4.204	4.048	3.736	3.112	2.644	2.176	1.864	1.240		
437	370	3.189	4.281	370	7.713	6.465	5.529	4.749	4.593	4.281	3.657	3.189	2.721	2.409	1.785		
7.557	5.217	3.189	4.281	5.217	7.713	6.465	5.529	4.749	4.593	4.281	3.657	3.189	2.721	2.409	1.785		
8-530657-3	8-530657-2	7-530657-4	3-530657-4	3-530657-3	3-530657-2	3-530657-1	3-530657-0	2-530657-9	2-530657-8	2-530657-7	2-530657-6	2-530657-5	2-530657-4	2-530657-3	2-530657-2	2-530657-1	

△ PART NO	NO. OF POSITION	A	B	C	D	W	F	△ PART NO

THIS DRAWING IS A CONTROLLED DOCUMENT.

REVISIONS: 1. 00779 (G)=530657

Customer Drawing