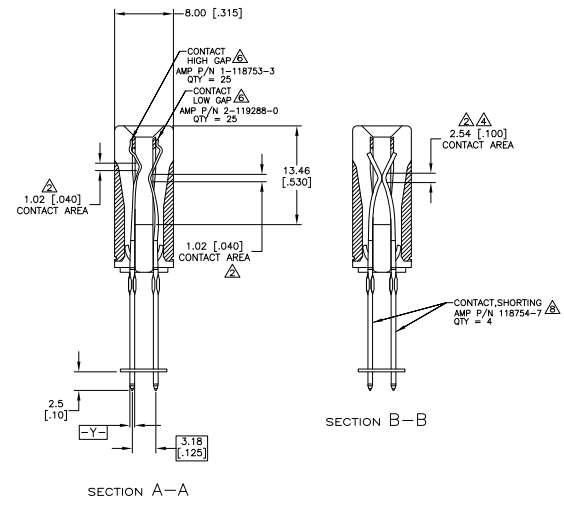
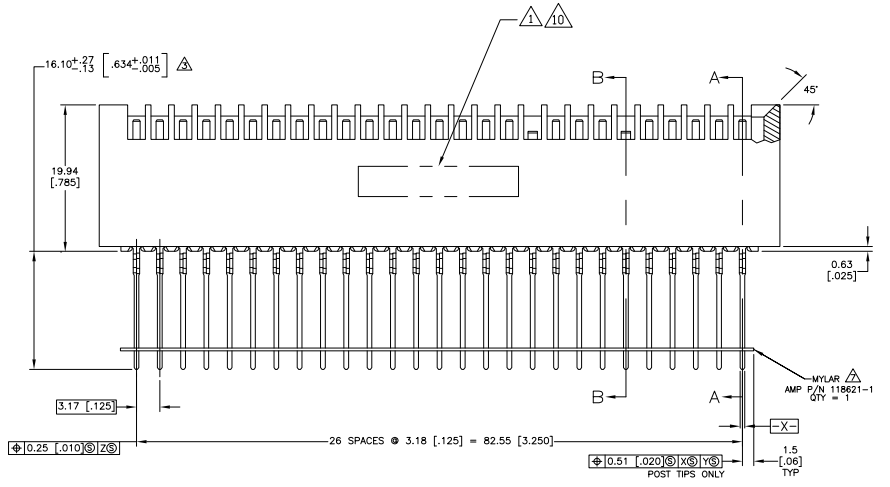


- △ HOT STAMPED AMP PART NUMBER AND DATE CODE IN 1/16 HIGH NEWS GOTHIC CHARACTERS CENTRALLY LOCATED AS SHOWN, SIDE OPTIONAL.
- △ GOLD PLATE 0.00076 [0.00030] MIN THICK.
- △ SOLDER PLATE 0.00076 [0.00030] MIN THICK ON POST AND ACTION PIN AREA ONLY.
- △ ALL DIMENSIONS ARE REFERENCE UNLESS OTHERWISE NOTED.
- △ HOUSING MATERIAL: VALOX 420 SEQ, 30% GLASS REINFORCED.
- △ CONTACT MATERIAL: PHOSPHOR BRONZE.
- △ MATERIAL: MYLAR, CLEAR-TYPE D.
- △ MATERIAL: BERYLLIUM COPPER 1/2 HM.
- △ RECOMMENDED HOLE SIZE AS FOLLOWS:

REQUIRED DRILL NO. 56	DRILL HOLE DIAMETER [1.021] [.0485]	PLATING		HOLE DIAMETER		COPPER HARDNESS 150 KNOOP MAX [.062]	PAD DIAMETER MIN
		COPPER	Pb Sn	AFTER PLATING	AFTER REFLOW		
		0.003/0.008 MIN	0.008 MIN	0.977/1.12	0.94/1.22		
		0.001/.003	0.003	0.938/.044	0.97/.048		

- △ ALL PARTS ASSEMBLED IN MEXICO MUST BE HOT STAMPED "ASSY IN MEXICO" THE WORD "MEXICO" CAN BE SUBSTITUTED ONLY WHERE PART SIZE PROHIBITS STAMPING "ASSY IN MEXICO". STAMP APPROX WHERE SHOWN.
- △ MATTE TIN PLATE 0.00076 [0.00030] MIN THICK ON POST AND ACTION PIN AREA ONLY.



CONTACT NUMBER	DESCRIPTION
3	CONTACT, SHORTING
2	CONTACT, LOW GAP
1	CONTACT, HIGH GAP

CAVITY NUMBER	28	29	30	31	32	33	34	35	36	37	38	39	40	41	42	43	44	45	46	47	48	49	50	51	52	53	54
CONTACT NUMBER	2	2	2	2	2	2	2	2	2	2	2	2	2	2	2	2	2	2	2	2	2	2	2	2	2	2	2
CAVITY NUMBER	1	1	1	1	1	1	1	1	1	1	1	1	1	1	1	1	1	1	1	1	1	1	1	1	1	1	1

CONTACT LOADING CHART

THIS DRAWING IS A CONTROLLED DOCUMENT

DESIGNED BY	REVISED BY	DATE	APP
11/8/80	11/21/81		

5-645395-1
645395-1
FINISH PART NUMBER

THIS ELECTRONICS CORPORATION
Harrisburg, PA 17105-3608

CONNECTOR ASSEMBLY AMP PACE,
.125 X .125, 27 DUAL POSITION
AMP P/N 118754-7

SIZE SIZE DRAWING NO
A1 00779 G=645395

CUSTOMER DRAWING