

DRAWING MADE IN THIRD ANGLE PROJECTION

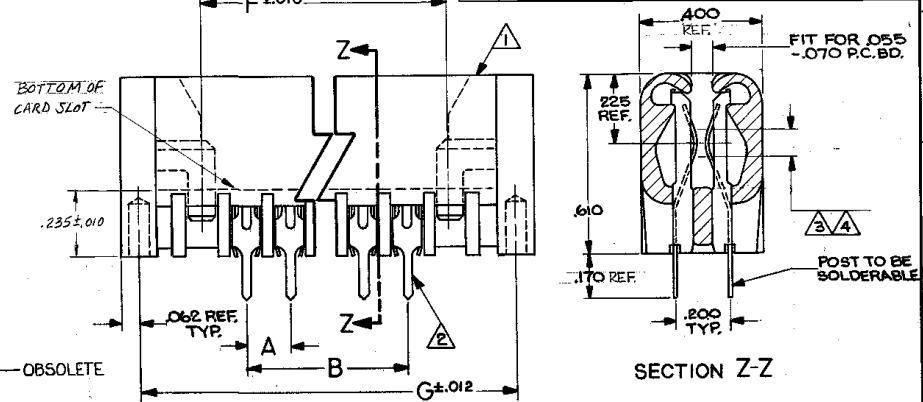
THIS DRAWING IS UNPUBLISHED. RELEASED FOR PUBLICATION
 © COPYRIGHT 1982 BY AMP INCORPORATED, HARRISBURG, PA. ALL INTERNATIONAL RIGHTS RESERVED. AMP PRODUCTS MAY BE COVERED BY U.S. AND FOREIGN PATENTS AND/OR PATENTS PENDING.

PART NUMBER	NO. OF POS.	A	B	F	G	FINISH
583715	-1	.100	.200	.400	.734	△
	2		.300	.500	.834	
	3		.400	.600	.934	
	4		.500	.700	1.034	
	5		.600	.800	1.134	
	6		.700	.900	1.234	
	7		.800	1.000	1.334	
	8		.900	1.100	1.434	
	9		1.000	1.200	1.534	
1-583715	-0		1.100	1.300	1.634	
	1		1.200	1.400	1.734	
	2		1.300	1.500	1.834	
	3		1.400	1.600	1.934	
	4		1.500	1.700	2.034	
	5		1.600	1.800	2.134	
	6		1.700	1.900	2.234	
	7		1.800	2.000	2.334	
	8		1.900	2.100	2.434	
	9		2.000	2.200	2.534	
2-583715	-0		2.100	2.300	2.634	
	1		2.200	2.400	2.734	
	2		2.300	2.500	2.834	
	3		2.400	2.600	2.934	
	4		2.500	2.700	3.034	
	5		2.600	2.800	3.134	
	6		2.700	2.900	3.234	
	7		2.800	3.000	3.334	
	8		2.900	3.100	3.434	
	9		3.000	3.200	3.534	
3-583715	-0		3.100	3.300	3.634	
	1		3.200	3.400	3.734	
	2		3.300	3.500	3.834	
	3		3.400	3.600	3.934	
	4		3.500	3.700	4.034	
	5		3.600	3.800	4.134	
	6		3.700	3.900	4.234	
	7		3.800	4.000	4.334	
	8		3.900	4.100	4.434	
	9		4.000	4.200	4.534	
4-583715	-0		4.100	4.300	4.634	
	1		4.200	4.400	4.734	
	2		4.300	4.500	4.834	
	3		4.400	4.600	4.934	
	4		4.500	4.700	5.034	
	5		4.600	4.800	5.134	
	6		4.700	4.900	5.234	
	7		4.800	5.000	5.334	
	8		4.900	5.100	5.434	
	9		5.000	5.200	5.534	
5-583715	-0		5.100	5.300	5.634	
	1		5.200	5.400	5.734	
	2		5.300	5.500	5.834	
	3		5.400	5.600	5.934	
	4		5.500	5.700	6.034	
	5		5.600	5.800	6.134	
	6		5.700	5.900	6.234	
	7		5.800	6.000	6.334	
	8		5.900	6.100	6.434	
	9		6.000	6.200	6.534	
6-583715	-0	.100	5.700	5.900	6.234	△

PART NUMBER	NO. OF POS.	A	B	F	G	FINISH
583715	17	.100	1.600	1.800	2.134	△

REV	DESCRIPTION	DATE	APPROVED
F	REV PER AD1583	3/2/87	LP/DB
G	REV PER AD 1633	6-2-87	LP
H	REV. PER AD 1698	8-2-87	LP
J	REV PER AD 1866	3/2/88	LP
K	REV PER AD 2116	3/18/88	LP
L	REL 6-1 PER 87-5193-291-1	1/88	LP/ANR
M	REV PER AD 2944	1/88	LP/ANR
N	REV PER AD 3150	2/89	LP/ANR
P	REV PER AD3493	3/90	LP/ANR
R	REV 0010-0252-93	5-8-93	DB/ANR
S	REV PER 0010-1603-35	1-30-93	DB/ANR
T	REV PER EC 030-209-97	7-2-97	NS
T	REV PER EC 030-209-97	7-2-97	NS
T1	REVISED PER ECO-10-000445	DIAMIC	AEQ

SUPERSEDED BY 6583715-3



- △1 HOUSING MATERIAL: GLASS-FILLED POLYESTER, COLOR-BLACK.
- △2 CONTACT MATERIAL: PHOSPHOR BRONZE
- △3 FINISH: .000015 GOLD, SELECTIVE
- △4 FINISH: .000030 GOLD, SELECTIVE
- △5 OBSOLETE PARTS: OBSOLETE CIS STREAMLINING PER D.RENAUD/D.SINISI

UNLESS OTHERWISE SPECIFIED DIMENSIONS ARE IN INCHES. TOLERANCES ON: DECIMALS ANGLES ±.005		CONTRACT NO. DW: <i>M. SHARPE</i> 5-9-82 CHK: <i>Ray</i> 10-11-82 APPD: <i>Ray</i> 10-11-82 APPD: <i>Bill Johnson</i> 10-11-82 DSGN APPD OTHER APPD	PART NO. AMP AMP INCORPORATED Harrisburg, Pa. 17108 NAME ASSEMBLY, TWIN LEAF, .100 C .010x.024 SOLDER TYPE POST, END CAP VERSION SIZE C FSCM NO. 00779 DRAWING NO. 583715
MATERIAL △1 △2	FINISH △3 △4	SCALE 4:1	SHEET 1 OF 2

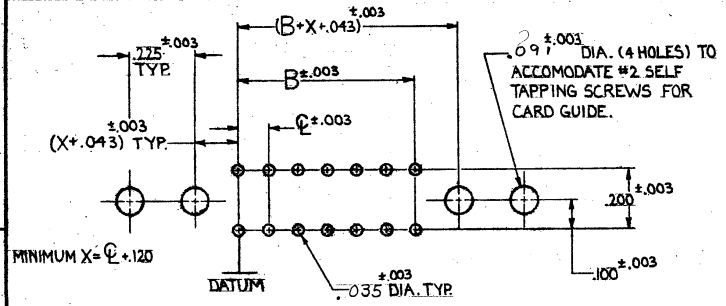
CUSTOMER DRAWING

DRAWING MADE IN THIRD ANGLE PROJECTION

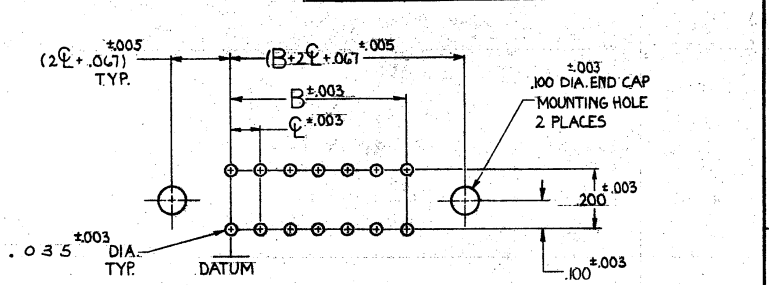
© COPYRIGHT 1971 BY AMP INCORPORATED, HARRISBURG, PA. ALL INTERNATIONAL RIGHTS RESERVED. AMP INCORPORATED PRODUCTS COVERED BY U. S. AND FOREIGN PATENTS AND/OR PATENTS PENDING.

LOC DIST FT 22

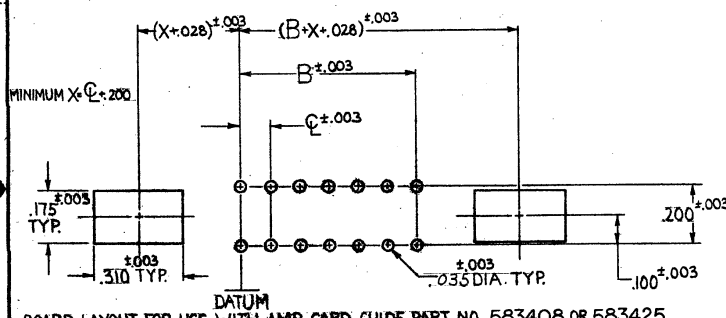
REVISIONS				DATE	APPROVED
P	F	ZONE/LTR	DESCRIPTION		
			SEE SHEET 1		



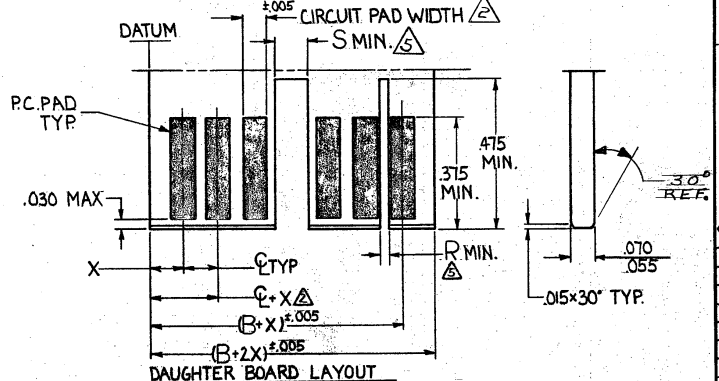
BOARD LAYOUT FOR USE WITH AMP CARD GUIDE PART NO. 583671



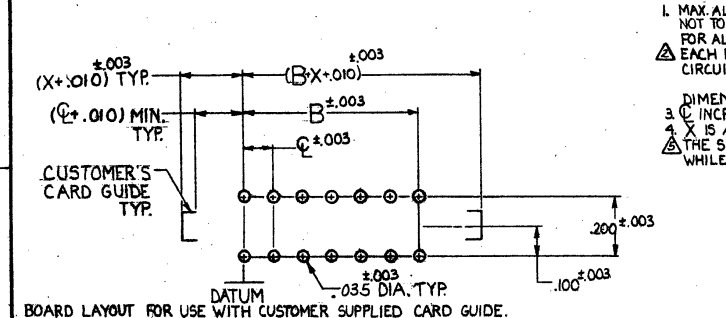
BOARD LAYOUT FOR USE WITH END CAP



BOARD LAYOUT FOR USE WITH AMP CARD GUIDE PART NO. 583408 OR 583425



DAUGHTER BOARD LAYOUT



BOARD LAYOUT FOR USE WITH CUSTOMER SUPPLIED CARD GUIDE.

1. MAX. ALLOWABLE WARPAGE OF MOTHER BOARD NOT TO EXCEED .005/INCH. MAX. ALLOWABLE BOW OF DAUGHTER BOARD NOT TO EXCEED .010/INCH. THICKNESS OF MOTHER BOARD IS .062 FOR DOUBLE SLOTTED CARD GUIDES AND .104 MAX. FOR ALL OTHER MOUNTING CONDITIONS.
2. EACH PAD LOCATION INCREASES BY $C \pm .005$ WITH A NON-CUMULATIVE TOLERANCE OF $\pm .005$
3. CIRCUIT PAD WIDTH - .045 FOR .100 C , .072 FOR .125 C , .080 FOR .150 C
4. DIMENSIONS APPLY TO BOTH SIDES OF DAUGHTER BOARD.
5. C INCREMENTS ON MOTHER BOARD HAVE $\pm .003$ NON-CUMULATIVE TOLERANCE.
6. X IS A CUSTOMER CONTROLLED DIMENSION EXCEPT FOR END CAP ASSEMBLIES WHERE $X = C - .008$
7. THE SLOT FOR INTER-CONTACT KEYING PLUGS MUST BE CENTERED BETWEEN THE PRINTED CIRCUIT PADS, WHILE THE SLOT FOR ON-CONTACT KEYING PLUGS MUST BE CENTERED ON THE AREA OF A PRINTED CIRCUIT PAD.

INTER-CONTACT KEYING PLUG	R	FOR CENTER LINE SPACING	ON-CONTACT KEYING PLUG	S	FOR CENTER LINE SPACING
530030-1	.050	.125-.150-.156	583114-1	.121	.100-.125
530030-2	.040	.100	583114-2	.160	.150-.156

UNLESS OTHERWISE SPECIFIED DIMENSIONS ARE IN INCHES. TOLERANCES ON: DECIMALS ANGLES	CONTRACT NO	DR	10-5-82	AMP INCORPORATED Harrisburg, Pa.
	MATERIAL	CHK	M. Smith	
	FINISH	APPD	Ray	
		DSGN APPD	M. R. Thomson	
NAME		HOUSING ASSEMBLY TWIN LEAF CONNECTOR		
SIZE CODE IDENT NO		C 00779		
DRAWING NO		583715		
SCALE		#		
				SHEET 2 OF 2

CUSTOMER DRAWING

AMP 1471-6 (9-73)