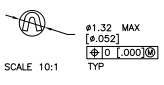
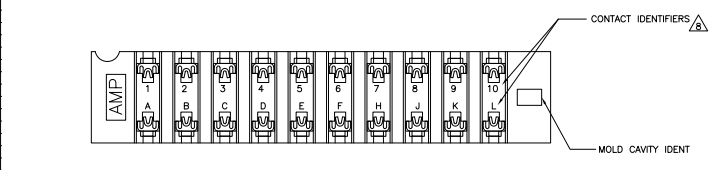
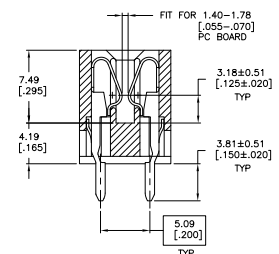
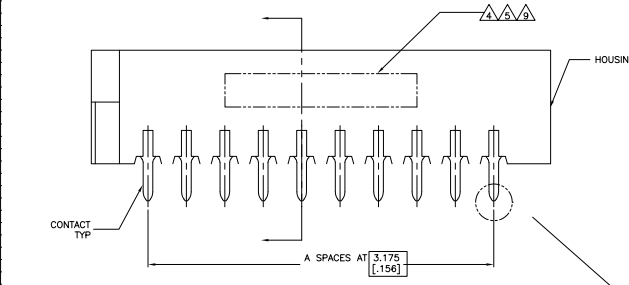
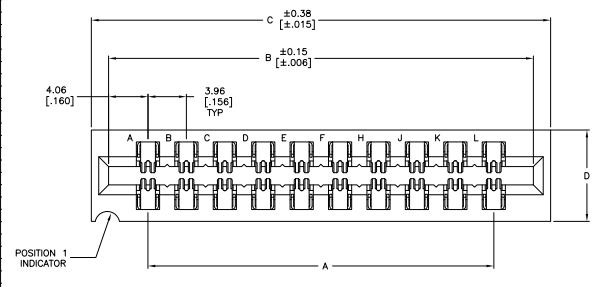


THIS DRAWING IS UNAPPROVED FOR PRODUCTION
 ALL RIGHTS RESERVED

REV	DATE	BY	CHK	DESCRIPTION	DATE	BY	CHK
AD	00						
K2				REVISED PER ECO-11-04820	11MAR11	RK	HMR

- △ 0.38µm[.000015] MIN GOLD ALL OVER 1.27µm[.000050] MIN NICKEL IN CONTACT AREA
- △ 0.76µm[.000030] MIN GOLD ALL OVER 1.27µm[.000050] MIN NICKEL IN CONTACT AREA
- △ 0.51µm[.000020] MIN GOLD ALL OVER 1.27µm[.000050] MIN NICKEL IN CONTACT AREA
- △ NO INK STAMPING ON 1-153666-5 PART
- △ ALL PARTS ASSEMBLED IN MEXICO MUST BE STAMPED "ASSY IN MEXICO"
 THE WORD "MEXICO" CAN BE SUBSTITUTED ONLY WHERE PART SIZE PROHIBITS
 STAMPING "ASSY IN MEXICO" INK STAMP COLOR WHITE OR HOT STAMP (NO WHITE TAPE)
 115-9009 APPROX. WHERE SHOWN SIDE OPTIONAL
- △ MATTE TIN PLATED CONTACT TAILS
- △ HOUSING: GLASS FILLED POLYESTER, GREEN
 CONTACTS: PHOSPHOR BRONZE
- △ MOLDED CHARACTERS (UPPER & LOWER CASE LETTERS FOLLOWED BY UPPER CASE
 LETTERS AA, AB, ETC.) OMITTING LETTERS G,I,O, & Q
- △ AMP PART NUMBER AND DATE CODE INK STAMPED WHITE OR HOT STAMP
 NO WHITE TAPE IN THIS AREA (SIDE OPTIONAL)
- △ BRIGHT TIN POST
- △ OBSOLETE PARTS: OBSOLETE CIS STREAMLINING PER D.RENAUD/D.SINISI



REV	DATE	BY	CHK	DESCRIPTION	DATE	BY	CHK
AD	00						
K2				REVISED PER ECO-11-04820	11MAR11	RK	HMR
OBSOLETE	1110	17810	17455	16642	43	0-530666-9	
	[4.37]	[7.012]	[6.872]	[6.552]			
	1110	11867	11511	10698	28	8-530666-2	
	[4.37]	[4.672]	[4.532]	[4.212]			
OBSOLETE	1110	12659	12304	11491	30	7-530666-9	
	[4.37]	[4.984]	[4.844]	[4.524]			
	940	9489	9134	8321	22	7-530666-6	
	[3.70]	[3.736]	[3.596]	[3.276]			
OBSOLETE	940	7904	7549	6736	18	7-530666-5	
	[3.70]	[3.112]	[2.972]	[2.652]			
	940	5527	5171	4359	15	7-530666-4	
	[3.70]	[2.176]	[2.036]	[1.716]			
	940	4735	4379	3566	12	7-530666-3	
	[3.70]	[1.864]	[1.724]	[1.404]			
	940	3150	2794	1981	10	7-530666-2	
	[3.70]	[1.240]	[1.100]	[.780]			
OBSOLETE	1110	17810	17455	16642	6	7-530666-1	
	[4.37]	[7.012]	[6.872]	[6.552]			
	940	11867	11511	10698	28	3-530666-2	
	[3.70]	[4.672]	[4.532]	[4.212]			
	1110	18207	17851	17038	44	3-530666-1	
	[4.37]	[7.168]	[7.028]	[6.708]			
	1110	15037	14681	13868	36	3-530666-0	
	[4.37]	[5.920]	[5.780]	[5.460]			
OBSOLETE	1110	12659	12304	11491	30	2-530666-9	
	[4.37]	[4.984]	[4.844]	[4.524]			
	940	10678	10323	9510	25	2-530666-8	
	[3.70]	[4.204]	[4.064]	[3.744]			
	940	10282	9926	9114	24	2-530666-7	
	[3.70]	[4.048]	[3.908]	[3.588]			
OBSOLETE	940	9489	9134	8321	22	2-530666-6	
	[3.70]	[3.112]	[2.972]	[2.652]			
	940	7904	7549	6736	18	2-530666-5	
	[3.70]	[2.644]	[2.504]	[2.184]			
	940	5527	5171	4359	15	2-530666-4	
	[3.70]	[2.176]	[2.036]	[1.716]			
	940	4735	4379	3566	12	2-530666-3	
	[3.70]	[1.864]	[1.724]	[1.404]			
	940	3150	2794	1981	10	2-530666-2	
	[3.70]	[1.240]	[1.100]	[.780]			
	940	11867	11511	10698	6	2-530666-1	
	[3.70]	[4.672]	[4.532]	[4.212]			
	1110	17810	17455	16642	43	1-530666-3	
	[4.37]	[7.012]	[6.872]	[6.552]			
	940	11867	11511	10698	28	1-530666-2	
	[3.70]	[4.672]	[4.532]	[4.212]			
	1110	18207	17851	17038	44	1-530666-1	
	[4.37]	[7.168]	[7.028]	[6.708]			
	1110	15037	14681	13868	36	1-530666-0	
	[4.37]	[5.920]	[5.780]	[5.460]			
	1110	12659	12304	11491	30	530666-9	
	[4.37]	[4.984]	[4.844]	[4.524]			
	940	10678	10323	9510	25	530666-8	
	[3.70]	[4.204]	[4.064]	[3.744]			
	940	10282	9926	9114	24	530666-7	
	[3.70]	[4.048]	[3.908]	[3.588]			
	940	9489	9134	8321	22	530666-6	
	[3.70]	[3.736]	[3.596]	[3.276]			
	940	7904	7549	6736	18	530666-5	
	[3.70]	[3.112]	[2.972]	[2.652]			
	940	5527	5171	4359	15	530666-4	
	[3.70]	[2.644]	[2.504]	[2.184]			
	940	4735	4379	3566	12	530666-3	
	[3.70]	[2.176]	[2.036]	[1.716]			
	940	4735	4379	3566	10	530666-2	
	[3.70]	[1.864]	[1.724]	[1.404]			
	940	3150	2794	1981	6	530666-1	
	[3.70]	[1.240]	[1.100]	[.780]			

REV	DATE	BY	CHK	DESCRIPTION	DATE	BY	CHK
AD	00						
K2				REVISED PER ECO-11-04820	11MAR11	RK	HMR

THIS DRAWING IS A CONTROLLED DOCUMENT.		REV. NO.	DATE	BY	CHK
REV. NO.	DATE	BY	CHK	DESCRIPTION	DATE
AD	00				
K2				REVISED PER ECO-11-04820	11MAR11

REV. NO.	DATE	BY	CHK	DESCRIPTION	DATE
AD	00				
K2				REVISED PER ECO-11-04820	11MAR11