

DRAWING MADE IN AMERICAN PROJECTION
 © 1967 BY AMP INCORPORATED. ALL RIGHTS RESERVED. AMP PRODUCTS COVERED BY PATENTS AND/OR PATENTS PENDING.

REVISIONS				
ZONE	LTR	DESCRIPTION	DATE	APPROVED
W	REV PER EC	0320-209-97	7-7-97	NS
W1	REVISED PER ECO-09	026444	NOV09	AEG

PART NO.	NO. OF POS.	A	B	C	D
583485-1	4	.100	.300	.100	.500
2	34		3.300	.050	3.400
3	50		4.700	.100	4.800
4	15		1.400	.100	1.600
5	60		5.700	.050	6.000
6	3		1.200	.100	.400
7	5		1.400		.600
8	6		1.500		.700
9	7		1.600		.800
1-583485-0	8		1.700		.900
1	9		1.800		1.000
1-	10		.900		1.100
3	11		1.000		1.200
1	12		1.100		1.300
1	13		1.200		1.400
1	14		1.300		1.500
1	15		1.400		1.600
1	16		1.500		1.700
1	17		1.600		1.800
1	18		1.700		1.900
2-583485-0	19		1.800		2.000
2	20		1.900		2.100
2	21		2.000		2.200
2	22		2.100		2.300
2	23		2.200		2.400
2	24		2.300		2.500
2	25		2.400		2.600
2	26		2.500		2.700
2	27		2.600		2.800
2	28		2.700		2.900
3-583485-0	29		2.800		3.000
3	30		2.900		3.100
3	31		3.000		3.200
3	32		3.100		3.300
3	33		3.200		3.400
3	34		3.300		3.500
3	35		3.400		3.600
3	36		3.500		3.700
3	37		3.600		3.800
3	38		3.700		3.900
3	39		3.800		4.000
4-583485-0	40		3.900		4.100
4	41		4.000		4.200
4	42		4.100		4.300
4	43		4.200		4.400
4	44		4.300		4.500
4	45		4.400		4.600
4	46		4.500		4.700
4	47		4.600		4.800
4	48		4.700		4.900
4	49		4.800	.100	5.000
5	50		4.900	.050	5.000
5	60		5.900	.100	6.100
5	34		3.300	.100	3.500
5	3		0.600	.100	0.800
5	4		7.700	.100	7.900
5-583485-5	60	.100	7.700	.100	8.100
5-583485-6	65	.100	6.400	.100	6.600

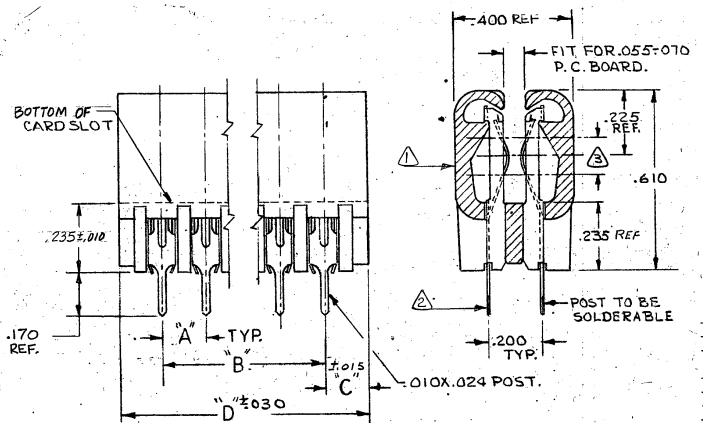
OBSOLETE

OBSOLETE

OBSOLETE

OBSOLETE

OBSOLETE



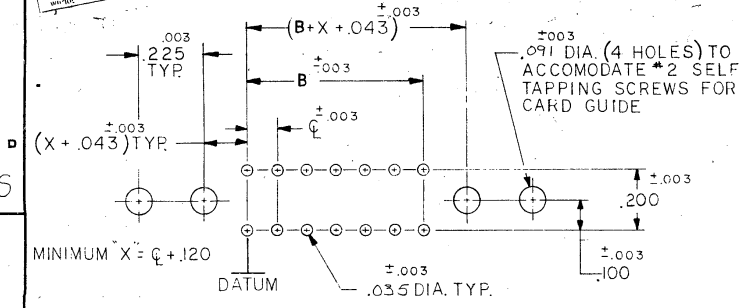
- △ FINISH: .000015 GOLD. SELECTIVE.
- △ SEE SHEET 2 FOR RECOMMENDED PRINTED CIRCUIT BOARD LAYOUT.
- △ OBSOLETE PARTS: OBSOLETE CIS STREAMLINING PER D.RENAUD/D.SINISI

UNLESS OTHERWISE SPECIFIED, DIMENSIONS ARE IN INCHES. TOLERANCES ON: DECIMALS ±.005 ANGLES ±1/2	CONTRACT NO.	AMP INCORPORATED HARRISBURG, PENNSYLVANIA	
	DR <i>Punkle 1-29-73</i>	NAME	HOUSING ASS'Y., TWIN LEAF, 100 C, SOLDER TYPE POST,
MATERIAL: HOUSING: GLASS FILLED POLYESTER COLOR: BLACK	CHK <i>M Zupler 2-5-73</i>	SIZE	C 00779
△ CONTACT: PHOS. BRONZE	APPD <i>Samy M Brown 2-5-73</i>	CODE IDENT NO.	5834 85
	REL <i>E.D. Trump 3/3/73</i>	NUMBER	5834 85
	DSGN APPD	SCALE	1:1
	OTHER APPD	SHEET 1 OF 2 SHTS.	

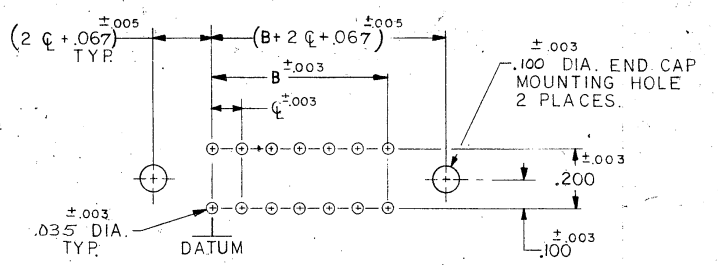
CUSTOMER DRAWING

DRAWING MADE IN AMERICAN PROJECTION
 © 1967 BY AMP INCORPORATED. ALL RIGHTS RESERVED. AMP PRODUCTS COVERED BY PATENTS AND/OR PATENTS PENDING.

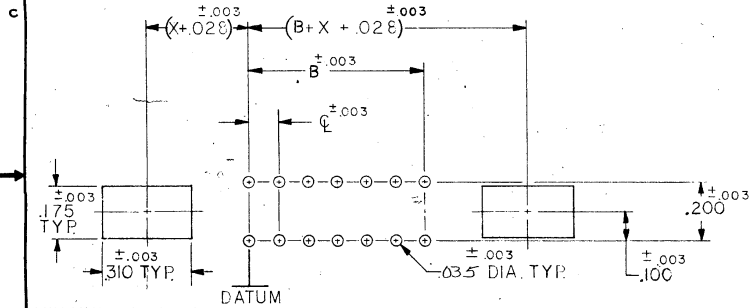
REVISIONS				
ZONE	LTR	DESCRIPTION	DATE	APPROVED
SEE SHEET 1				



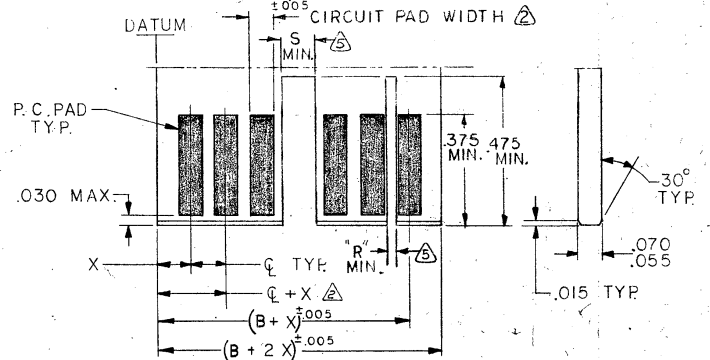
BOARD LAYOUT FOR USE WITH AMP CARD GUIDE PART NO. 583671



BOARD LAYOUT FOR USE WITH END CAP

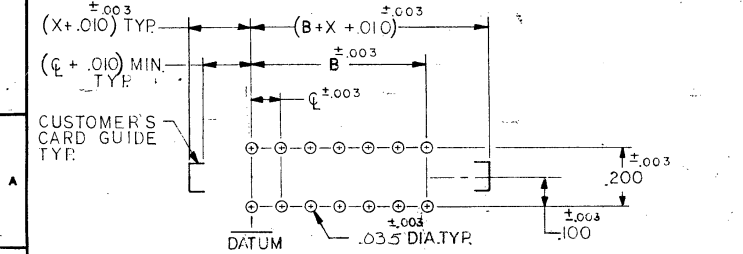


BOARD LAYOUT FOR USE WITH AMP CARD GUIDE PART NO. 583405 CR 583425



DAUGHTER BOARD LAYOUT

- MAX. ALLOWABLE WARPAGE OF MOTHER BOARD NOT TO EXCEED .005/IN.
- MAX. ALLOWABLE BOW OF DAUGHTER BOARD NOT TO EXCEED .010/IN.
- THICKNESS OF MOTHER BOARD IS .062 FOR DOUBLE SLOTTED CARD GUIDES AND .104 MAX. FOR ALL OTHER MOUNTING CONDITIONS.
- EACH PAD LOCATION INCREASES BY $C \pm .005$ WITH A NON-CUMULATIVE TOLERANCE OF $\pm .005$.
- CIRCUIT PAD WIDTH - .052 FOR .100 C
 .072 FOR .125 C
 .072 FOR .150 C
 .080 FOR .156 C
- DIMENSIONS APPLY TO BOTH SIDES OF DAUGHTER BOARD.
- 3 C INCREMENTS ON MOTHER BOARD HAVE $\pm .003$ NON-CUMULATIVE TOLERANCE.
- X IS A CUSTOMER CONTROLLED DIMENSION EXCEPT FOR END CAP ASSEMBLIES WHERE X = $C - .008$



BOARD LAYOUT FOR USE WITH CUSTOMER SUPPLIED CARD GUIDE

THE SLOT FOR INTER-CONTACT KEYING PLUGS MUST BE CENTERED BETWEEN THE PRINTED CIRCUIT PADS, WHILE THE SLOT FOR ON-CONTACT KEYING PLUGS MUST BE CENTERED ON THE AREA OF A PRINTED CIRCUIT PAD.

INTER-CONTACT KEYING PLUG	R	FOR CENTER LINE SPACING	ON CONTACT KEYING PLUG	S	FOR CENTER LINE SPACING
530030-1	.050	.125-.150-.156	583714-1	.129	.100-.125
530030-2	.040	.100	583714-2	.160	.150-.156

UNLESS OTHERWISE SPECIFIED, DIMENSIONS ARE IN INCHES. TOLERANCES ARE IN DECIMALS & ANGLES &		CONTRACT NO.		AMP INCORPORATED, HARRISBURG, PENNSYLVANIA	
MATERIAL		DR. <i>Russell 1-29-73</i>		NAME HOUSING ASSEMBLY TWIN LEAF CONNECTOR .100 CENTERS.	
		CHK. <i>M. Ziegler 2-5-75</i>		SIZE C	
		APPD. <i>Sam M. Brown 2-14-73</i>		CODE IDENT NO. 00779	
		REL. <i>R. Trump 4/3/73</i>		NUMBER 583485	
		DSGN APPD.		SCALE	
		OTHER APPD.		SHEET 2 OF 2 SHTS.	