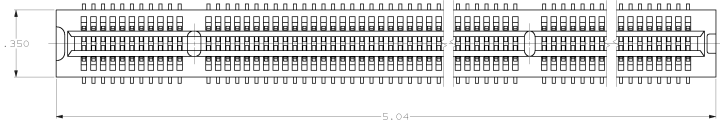
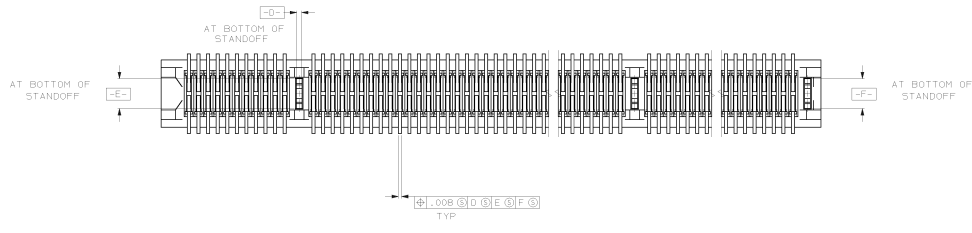
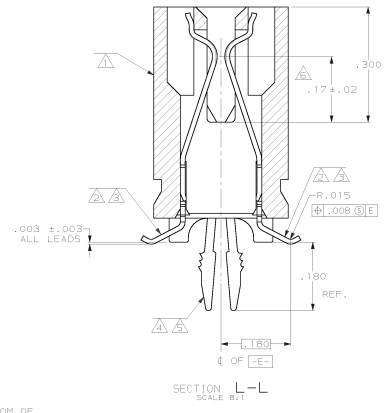
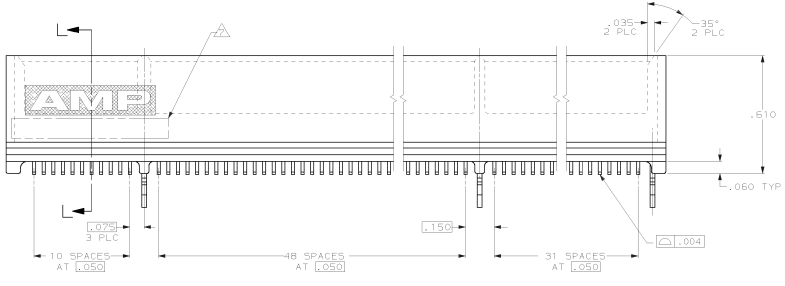


MAKING FROM IN HOUSE INVESTIGATION
 THESE DRAWINGS TO UNPUBLISHED
 BY AMP INCORPORATED. ALL INTERNATIONAL RIGHTS RESERVED.

REVISED PER		DATE	APP'D
B	051-0071-99		
C	0518-0139-00		



- △ HOUSING, HIGH TEMPERATURE THERMOPLASTIC.
- △ CONTACT; PHOSPHOR BRONZE.
- △ CONTACT FINISH; .00100 MIN NICKEL ALL OVER.
.00050 MIN GOLD OVER NICKEL IN CONTACT AREA.
.00100 MIN TIN-LEAD OVER NICKEL ON SOLDER TAILS.
- △ METAL HOLD DOWN; BRASS.
- △ METAL HOLD DOWN FINISH; .00050 MIN NICKEL ALL OVER.
.000150 MIN TIN-LEAD ALL OVER.
- △ DISTANCE FROM CONTACT POINT TO BOTTOM OF CARD SLOT.
- △ AMP PART NUMBER, DATE CODE AND CSA LOGO MARKED IN APPROXIMATE AREA SHOWN.



145246-1 AS SHOWN

DO NOT SCALE PRINT. UNLESS SPECIFIED DIMENSIONS IN MM (INCHES)		PART NO	
DR 2/29/95	6 BRON	AMP AMP Incorporated Harrisburg, PA 17105-9608	
CHK 2/29/95	9 BRASS	NAME	
APPD 2/29/95	11 BRASS	CONNECTOR ASSEMBLY, 92 DUAL POSITION, .050 SERIES, STANDARD EDGE SURFACE MOUNT	
MATERIAL	PRODUCT SPEC	SIZE	DATE CODE
△△△	-	D	00779
FINISH	APPLICATION SPEC	DRAWING NO	
△△	-	C=145246	
RETURN	-	SCALE	SHEET
		4:1	1 OF 2

THIS DRAWING IS A CONTROLLED DOCUMENT FOR AMP INCORPORATED. IT IS SUBJECT TO CHANGE AND THE CONTROLLING DRAWING ORGANIZATION SHOULD BE CONTACTED FOR THE LATEST REVISION.

CUSTOMER DRAWING

