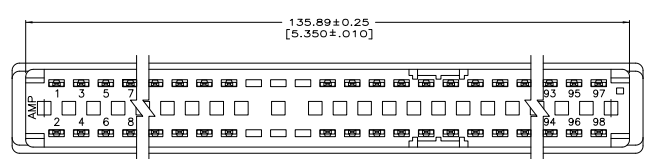
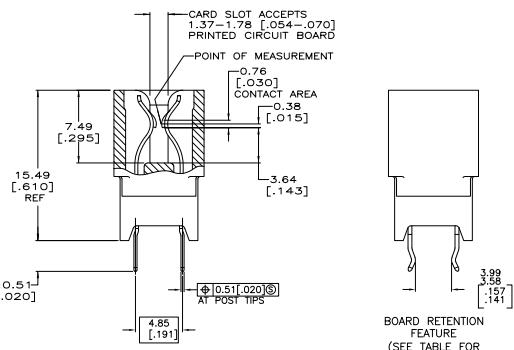
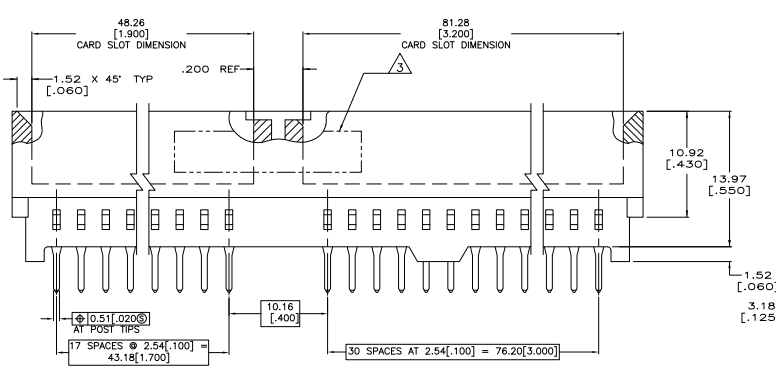
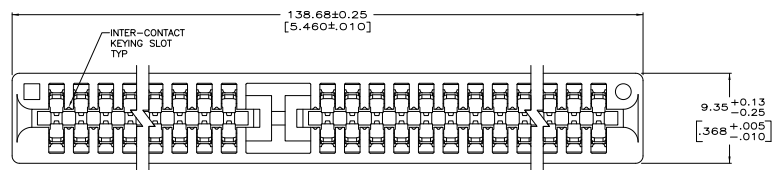


THIS DRAWING IS UNPUBLISHED
 ALL RIGHTS RESERVED
 IN THE ELECTRONICS CORPORATION

REV	DATE	DESCRIPTION	BY	CHK	APP
AA	00				
AA		E20-07-026535			DRW:R2308 LAM:JWF

- MATERIAL: GLASS FILLED POLYESTER; COLOR: BLACK.
HOUSING: PHOS BRONZE CONTACT: PHOS BRONZE
 - FINISH: (SEE TABLE FOR GOLD PLATING) IN CONTACT AREA, 0.0025±[.000100] MIN TIN-LEAD ON SOLDER POSTS, ALL OVER 0.00157[.000050] MIN NICKEL
 - AMP LOGO, TE PART NUMBER, DATE CODE AND CSA LOGO INK STAMPED WHITE (HOT STAMPED OR LAZER PRINTED) IN THE APPROXIMATE AREA SHOWN, EITHER SIDE PERMISSIBLE, WHEN HOUSING SIZE PERMITS
 - DATUMS AND BASIC DIMENSIONS ESTABLISHED BY CUSTOMER
 - THE RETENTIVE FEATURE OF THIS CONNECTOR IS DESIGNED FOR FULL SEATING IN 1.57±0.20[.062±.008] THICK CIRCUIT BOARDS. FOR APPLICATIONS IN BOARDS OF OTHER THICKNESSES, CONTACT TYCO ELECTRONICS
- △ FINISH: GOLD FLASH
 △ FINISH: 0.00038[.000015] MIN
 △ FINISH: 0.00076[.000030] MIN



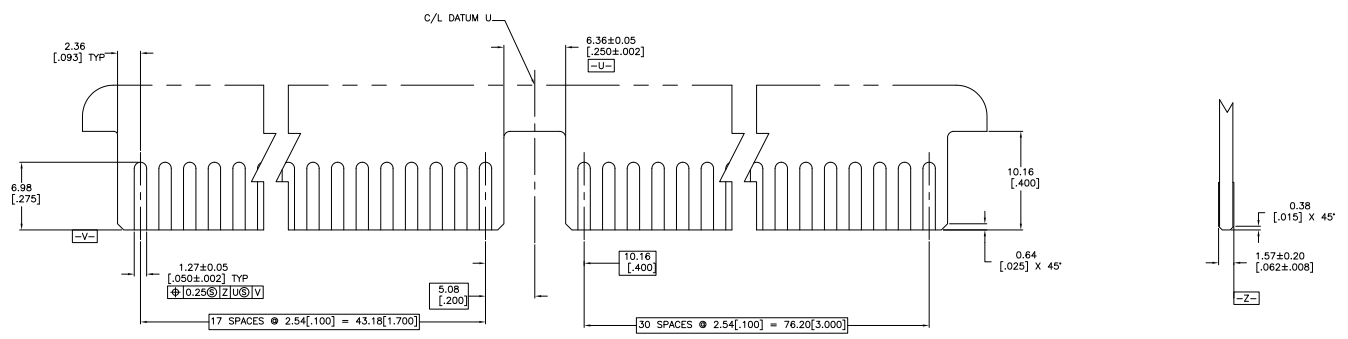
OBsolete 176139-4
 PART NUMBER

5, 6, 31, 32, 41, 42, 93, 94	△	49	176139-3
5, 6, 31, 32, 41, 42, 93, 94	△	49	176139-2
5, 6, 31, 32, 41, 42, 93, 94	△	49	176139-1
BOARD RETENTION FEATURE LOCATION (SEE DETAIL Y)	FINISH	NO OF POSN	PART NUMBER

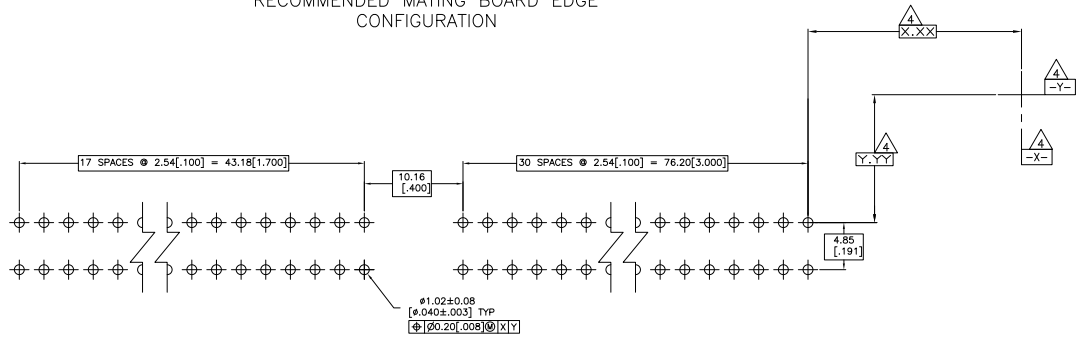
THIS DRAWING IS A CONTROLLED DOCUMENT		REVISED BY		DATE		DESCRIPTION		DRAWN BY		CHECKED BY	
INCHES	DECIMALS	BY	DATE	BY	DATE	BY	DATE	BY	DATE	BY	DATE
1/16	0.0005										
1/32	0.0010										
1/64	0.0020										
3/128	0.0030										
1/64	0.0040										
3/256	0.0050										
1/128	0.0060										
1/64	0.0070										
3/256	0.0080										
1/128	0.0090										
1/64	0.0100										
3/256	0.0110										
1/128	0.0120										
1/64	0.0130										
3/256	0.0140										
1/128	0.0150										
1/64	0.0160										
3/256	0.0170										
1/128	0.0180										
1/64	0.0190										
3/256	0.0200										
1/128	0.0210										
1/64	0.0220										
3/256	0.0230										
1/128	0.0240										
1/64	0.0250										
3/256	0.0260										
1/128	0.0270										
1/64	0.0280										
3/256	0.0290										
1/128	0.0300										
1/64	0.0310										
3/256	0.0320										
1/128	0.0330										
1/64	0.0340										
3/256	0.0350										
1/128	0.0360										
1/64	0.0370										
3/256	0.0380										
1/128	0.0390										
1/64	0.0400										
3/256	0.0410										
1/128	0.0420										
1/64	0.0430										
3/256	0.0440										
1/128	0.0450										
1/64	0.0460										
3/256	0.0470										
1/128	0.0480										
1/64	0.0490										
3/256	0.0500										
1/128	0.0510										
1/64	0.0520										
3/256	0.0530										
1/128	0.0540										
1/64	0.0550										
3/256	0.0560										
1/128	0.0570										
1/64	0.0580										
3/256	0.0590										
1/128	0.0600										
1/64	0.0610										
3/256	0.0620										
1/128	0.0630										
1/64	0.0640										
3/256	0.0650										
1/128	0.0660										
1/64	0.0670										
3/256	0.0680										
1/128	0.0690										
1/64	0.0700										
3/256	0.0710										
1/128	0.0720										
1/64	0.0730										
3/256	0.0740										
1/128	0.0750										
1/64	0.0760										
3/256	0.0770										
1/128	0.0780										
1/64	0.0790										
3/256	0.0800										
1/128	0.0810										
1/64	0.0820										
3/256	0.0830										
1/128	0.0840										
1/64	0.0850										
3/256	0.0860										
1/128	0.0870										
1/64	0.0880										
3/256	0.0890										
1/128	0.0900										
1/64	0.0910										
3/256	0.0920										
1/128	0.0930										
1/64	0.0940										
3/256	0.0950										
1/128	0.0960										
1/64	0.0970										
3/256	0.0980										
1/128	0.0990										
1/64	0.1000										

THIS DRAWING IS UNPUBLISHED. ALL RIGHTS RESERVED.
 © 2008 Tyco Electronics Corporation. ALL RIGHTS RESERVED.

REV	DATE	DESCRIPTION	BY	APP
AA	00	SEE SHEET 1	-	-



RECOMMENDED MATING BOARD EDGE CONFIGURATION



RECOMMENDED PC BOARD LAYOUT

THIS DRAWING IS A CONTROLLED DOCUMENT.		REV: A	DATE: 11/14/08	BY: J.A. MAYER	APP: [Signature]
DRAWING NO: 108-1248		REV: 1		DATE: 11/14/08	
DESCRIPTION: CONNECTOR ASSY, EDGE CARD, 2.54 [100] CENTERLINE		REV: 1		DATE: 11/14/08	
DRAWN BY: [Signature]		CHECKED BY: [Signature]		DATE: 11/14/08	
SEE NOTE 1		SEE NOTE 2		DATE: 11/14/08	
CUSTOMER DRAWING		A100779		REV: 1	