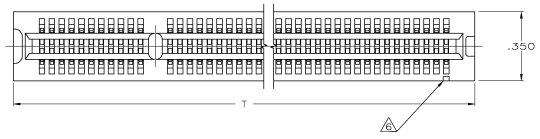
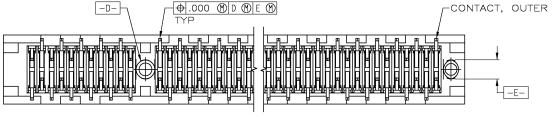
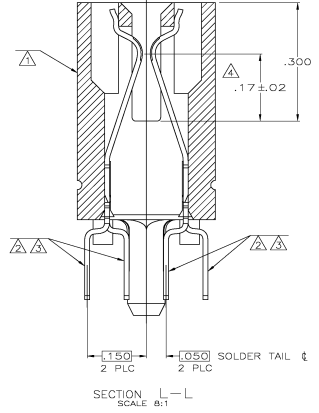
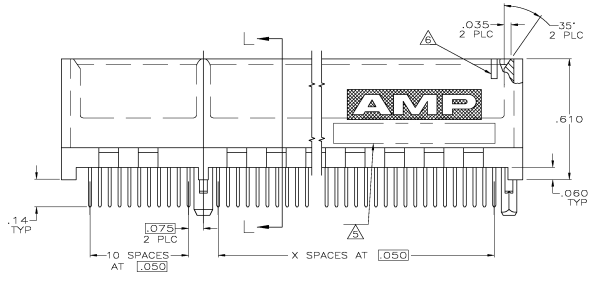


REV	DATE	DESCRIPTION	BY	CHK
00				
0	24 JUN 68	RELEASED PER EC 0512-0287-04	JAW	AWF



- △ HOUSING: HIGH TEMPERATURE THERMOPLASTIC, COLOR: BROWN.
- △ CONTACT: PHOSPHOR BRONZE.
- △ CONTACT FINISH: .000100 MIN NICKEL ALL OVER, .000000 MIN GOLD OVER NICKEL IN CONTACT AREA, .000100 MIN MATTE TIN OVER NICKEL ON SOLDER TAILS.
- △ DISTANCE FROM CONTACT POINT TO BOTTOM OF CARD SLOT.
- △ AMP PART NUMBER, DATE CODE AND CSA LOGO MARKED IN APPROXIMATE AREA SHOWN.
- △ PIN ONE IDENTIFIER NOTCH ONLY ON PART NUMBERS INDICATED.

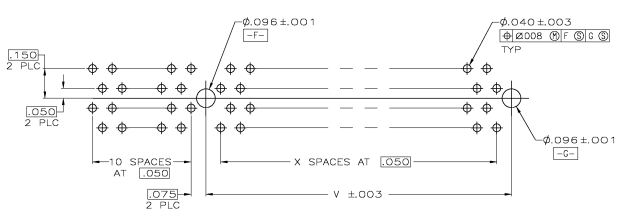


SEE SHEET 2 FOR HOLE PATTERNS

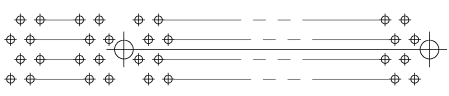
NO	B	.700	.660	1.49	1.1	2.3	5650181-3
NO	A	1.550	1.510	2.34	2.8	4.0	5650181-2
YES	A	2.350	2.310	3.14	4.4	5.6	5650181-1
PIN ONE IDENTIFIER	HOLE PATTERN	V	U	T	X		NG OF DUAL POSN PART NUMBER

**THIS DRAWING IS A CONTROLLED DOCUMENT.**

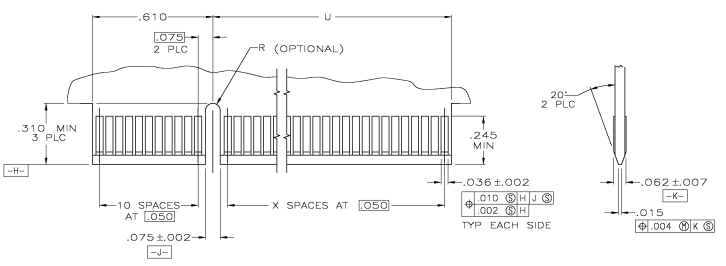
DESIGNED BY	APPROVED BY	DATE	24 JUN 68
DRAWN BY	DATE	24 JUN 68	
CHECKED BY	DATE		
INSP BY	DATE		
DATE			
PROJECT	CONNECTOR ASSEMBLY, DUAL POSITION, 050 SERIES.		
PROJECT NO.	108-14034		
WORK ORDER NO.	114-26012		
REV	DATE	ISSUED BY	REVISED TO
1		A100779	Q=5650181
CUSTOMER DRAWING			



RECOMMENDED CONNECTOR MOUNTING HOLE PATTERN A  
 (CONNECTOR SIDE SHOWN)



RECOMMENDED CONNECTOR MOUNTING HOLE PATTERN B  
 (CONNECTOR SIDE SHOWN)



RECOMMENDED MATING BOARD EDGE CONFIGURATION

THIS DRAWING IS A CONTROLLED DOCUMENT		REV	DATE	BY	CHK	APP
00	17	1M				
CUSTOMER DRAWING		A1 00779		Q=5650181		