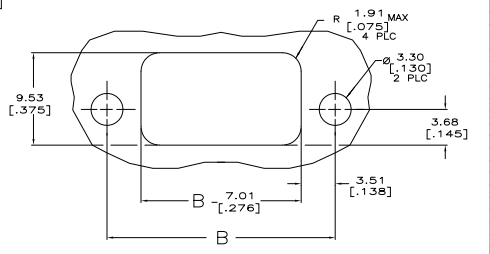
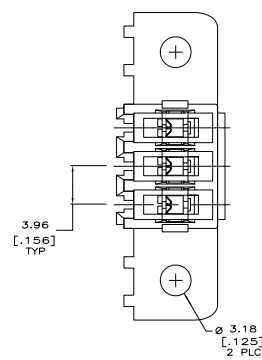
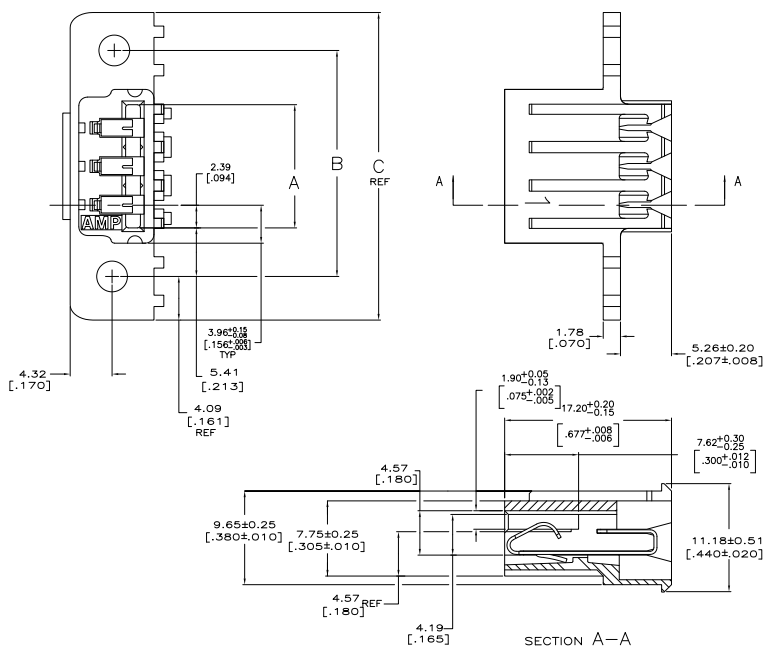
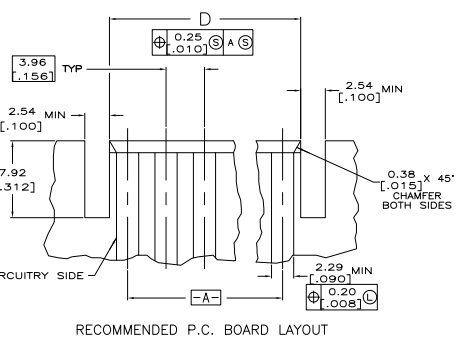


REV	DATE	DESCRIPTION	BY	CHK	APP
0					
1		REVISED PER EDD-11-00027			

- MATERIAL:
CONNECTOR: POLYESTER UL94V-0 (WHITE).
CONTACTS: 0.30 [.012] THK COPPER ALLOY.
- CONTACT ACCEPT #24 AWG WIRE WITH 2.41 [.095] MAXIMUM INSULATION DIAMETER.
- CONNECTOR MATES WITH 1.57±0.20 [.062±.008] THICK PC BOARD.
- HOUSING FEATURES: CLOSED END, STANDARD MOUTH WITH MOUNTING EARS.
- CONTACT FINISH: BRIGHT TIN-LEAD 0.00203 [.00080] MIN THK.
- CONTACT FINISH: MATTE WHISKER MITIGATED TIN 0.00203 [.00080] MIN THICKNESS OVER NICKEL UNDERPLATE.
- OBsolete PARTS: OBsolete CIS STREAMLINING PER D.RENAUD/D.SINISI



RECOMMENDED PANEL CUTOUT



CONTACT FINISH	D	C	B	A	NO. OF CIRCUITS	PART NUMBER
SUPERSEDED	95.50 [3.760]	114.91 [4.524]	106.73 [4.202]	95.91 [3.776]	24	5-640867-4
	91.54 [3.604]	110.95 [4.368]	102.77 [4.046]	91.95 [3.620]	23	5-640867-3
	87.58 [3.448]	106.98 [4.212]	98.81 [3.890]	87.99 [3.464]	22	5-640867-2
	83.62 [3.292]	103.02 [4.056]	94.84 [3.734]	84.02 [3.308]	21	5-640867-1
	79.65 [3.136]	99.06 [3.900]	90.88 [3.578]	80.06 [3.152]	20	5-640867-0
	71.73 [2.824]	91.14 [3.588]	82.96 [3.266]	72.14 [2.840]	18	4-640867-8
	59.84 [2.356]	79.25 [3.120]	71.07 [2.798]	60.25 [2.372]	15	4-640867-5
	47.96 [1.888]	67.36 [2.652]	59.18 [2.330]	48.36 [1.904]	12	4-640867-2
	36.07 [1.420]	55.47 [2.184]	47.29 [1.862]	36.47 [1.436]	9	3-640867-9
	24.18 [.952]	43.59 [1.716]	35.41 [1.394]	24.59 [.968]	6	3-640867-6
	12.29 [.484]	31.70 [1.248]	23.52 [.926]	12.70 [.500]	3	3-640867-3
	SUPERSEDED	95.50 [3.760]	114.91 [4.524]	106.73 [4.202]	95.91 [3.776]	24
91.54 [3.604]		110.95 [4.368]	102.77 [4.046]	91.95 [3.620]	23	2-640867-3
87.58 [3.448]		106.98 [4.212]	98.81 [3.890]	87.99 [3.464]	22	2-640867-2
83.62 [3.292]		103.02 [4.056]	94.84 [3.734]	84.02 [3.308]	21	2-640867-1
79.65 [3.136]		99.06 [3.900]	90.88 [3.578]	80.06 [3.152]	20	2-640867-0
71.73 [2.824]		91.14 [3.588]	82.96 [3.266]	72.14 [2.840]	18	1-640867-8
59.84 [2.356]		79.25 [3.120]	71.07 [2.798]	60.25 [2.372]	15	1-640867-5
47.96 [1.888]		67.36 [2.652]	59.18 [2.330]	48.36 [1.904]	12	1-640867-2
36.07 [1.420]		55.47 [2.184]	47.29 [1.862]	36.47 [1.436]	9	640867-9
24.18 [.952]		43.59 [1.716]	35.41 [1.394]	24.59 [.968]	6	640867-6
12.29 [.484]		31.70 [1.248]	23.52 [.926]	12.70 [.500]	3	640867-3

THIS DRAWING IS A CONTROLLED DOCUMENT. DATE: 10-31-11

TE CONNECTIVITY
 MTA-156
 CARD EDGE CONNECTOR ASSEMBLY,
 24 WIRE-PANEL MOUNT

SEE NOTE 1

CUSTOMER DRAWING: A100779G-640867

DATE: 5-11

