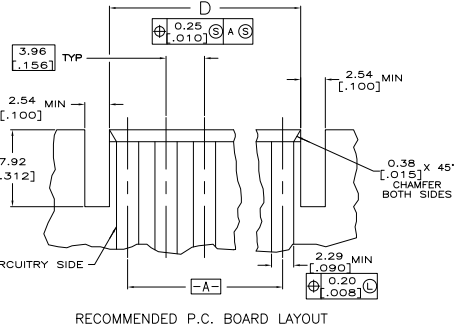
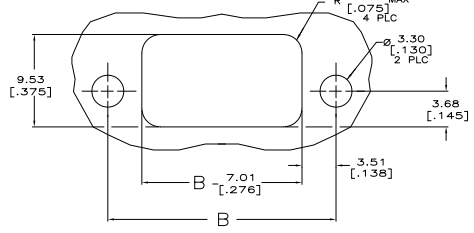
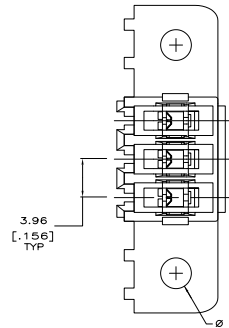
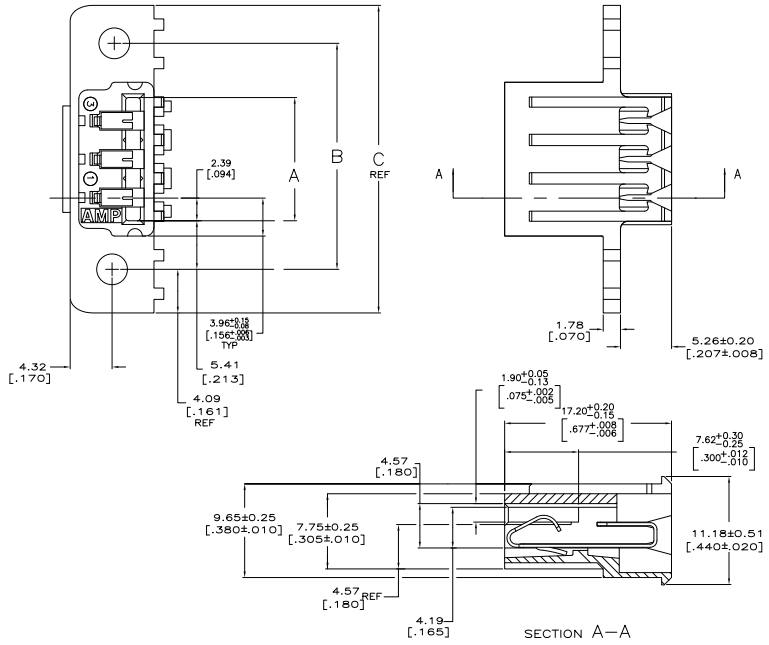


THIS DRAWING IS UNCLASSIFIED  
 UNLESS INDICATED OTHERWISE  
 © 2008 BY TTI ELECTRONICS CORPORATION. ALL RIGHTS RESERVED.

REV	DATE	DESCRIPTION	BY	CHK
CM	0			
N	02-07-012897		264907	KW DB
N1	REVISED PER ECO-09-023313		130209	KK AEG

- MATERIAL: POLYESTER UL94V-0 (RED).  
CONTACTS: 0.30 [.012] THK COPPER ALLOY.
- CONTACT ACCEPT #22 AWG WIRE WITH 2.41 [.095] MAXIMUM INSULATION DIAMETER.
- CONNECTOR MATES WITH 1.57±0.20[.062±.008] THICK PC BOARD.
- HOUSING FEATURES: CLOSED END, STANDARD MOUTH WITH MOUNTING EARS.
- CONTACT FINISH: BRIGHT TIN-LEAD 0.00203[.000080] MIN THK.
- CONTACT FINISH: MATTE WHISKER MITIGATED TIN 0.00203[.000080] MIN THICKNESS OVER NICKEL UNDERPLATE.
- OBsolete PARTS: OBSOLETE CIS STREAMLINING PER D.RENAUD/D.SINISI



CONTACT FINISH	D	C	B	A	NO. OF CIRCUITS	PART NUMBER
SUPERSEDED	95.50 [3.760]	114.91 [4.524]	106.73 [4.202]	95.91 [3.776]	24	5-640866-4
	91.54 [3.604]	110.95 [4.368]	102.77 [4.046]	91.95 [3.620]	23	5-640866-3
	87.58 [3.448]	106.98 [4.212]	98.81 [3.890]	87.99 [3.464]	22	5-640866-2
	83.62 [3.292]	103.02 [4.056]	94.84 [3.734]	84.02 [3.308]	21	5-640866-1
	79.66 [3.136]	99.06 [3.900]	90.88 [3.578]	80.06 [3.152]	20	5-640866-0
	71.73 [2.824]	91.14 [3.588]	82.96 [3.266]	72.14 [2.840]	18	4-640866-8
	59.84 [2.356]	79.25 [3.120]	71.07 [2.798]	60.25 [2.372]	15	4-640866-5
	47.96 [1.888]	67.36 [2.652]	59.18 [2.330]	48.36 [1.904]	12	4-640866-2
	36.07 [1.420]	55.47 [2.184]	47.29 [1.862]	36.47 [1.436]	9	3-640866-9
	24.18 [.952]	43.59 [1.716]	35.41 [1.394]	24.59 [.968]	6	3-640866-6
	12.29 [.484]	31.70 [1.248]	23.52 [.926]	12.70 [.500]	3	3-640866-3
	95.50 [3.760]	114.91 [4.524]	106.73 [4.202]	95.91 [3.776]	24	2-640866-4
91.54 [3.604]	110.95 [4.368]	102.77 [4.046]	91.95 [3.620]	23	2-640866-3	
87.58 [3.448]	106.98 [4.212]	98.81 [3.890]	87.99 [3.464]	22	2-640866-2	
83.62 [3.292]	103.02 [4.056]	94.84 [3.734]	84.02 [3.308]	21	2-640866-1	
79.66 [3.136]	99.06 [3.900]	90.88 [3.578]	80.06 [3.152]	20	2-640866-0	
71.73 [2.824]	91.14 [3.588]	82.96 [3.266]	72.14 [2.840]	18	1-640866-8	
59.84 [2.356]	79.25 [3.120]	71.07 [2.798]	60.25 [2.372]	15	1-640866-5	
47.96 [1.888]	67.36 [2.652]	59.18 [2.330]	48.36 [1.904]	12	1-640866-2	
36.07 [1.420]	55.47 [2.184]	47.29 [1.862]	36.47 [1.436]	9	640866-9	
24.18 [.952]	43.59 [1.716]	35.41 [1.394]	24.59 [.968]	6	640866-6	
12.29 [.484]	31.70 [1.248]	23.52 [.926]	12.70 [.500]	3	640866-3	

THIS DRAWING IS A CONTROLLED DOCUMENT. DATE: 2-20-08  
 REV: 1  
 INCHES: 1:1  
 METRIC: 1:1  
 DRAWING NO: MTA-156  
 CUSTOMER DRAWING: A100779G-640866  
 TITLE: CARD EDGE CONNECTOR ASSEMBLY, 22 WIRE-PANEL MOUNT  
 TTI Electronics Corporation, Harrisburg, PA 17105-3008

