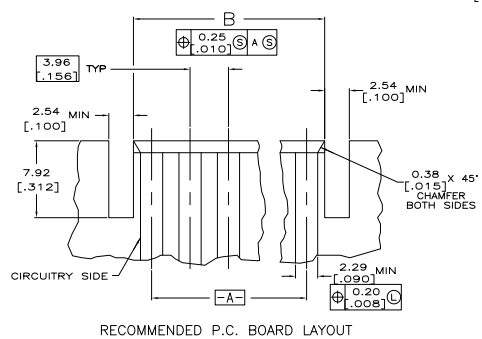
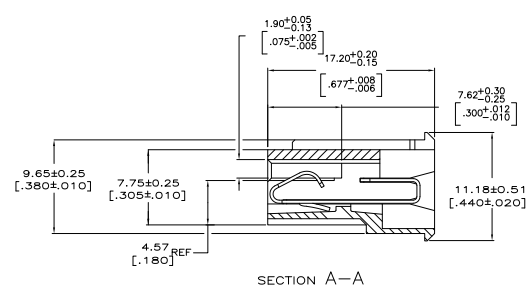
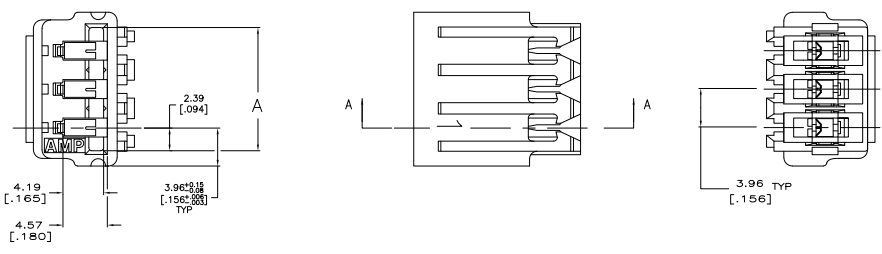


THIS DRAWING IS UNPUBLISHED. ALL RIGHTS RESERVED.
 © 2008 BY TTI ELECTRONICS CORPORATION

REV	DATE	DESCRIPTION	BY	CHK	APP
CM	0				
T	02-07-012897		264907	KW	DB
TT	REVISED PER ECO-09-023313		1300709	KK	AEG

- MATERIAL:
CONNECTOR: POLYESTER UL94V-0 (RED).
CONTACTS: 0.30 [.012] THK COPPER ALLOY.
 - CONTACT ACCEPT #22 AWG WIRE WITH 2.41 [.095] MAXIMUM INSULATION DIAMETER.
 - CONNECTOR MATES WITH 1.57±0.20[.062±.008] THICK PC BOARD.
 - HOUSING FEATURES: CLOSED END, STANDARD MOUTH WITHOUT MOUNTING EARS.
- ⚠ CONTACT FINISH: BRIGHT TIN-LEAD 0.00203[.000080] MIN THK.
 ⚠ CONTACT FINISH: MATTE WHISKER MITIGATED TIN 0.00203[.000080]
 ⚠ OBSOLETE PARTS: OBSOLETE CIS STREAMLINING PER D.RENAUD/D.SISILE



CONTACT FINISH	B	A	NO. OF CIRCUITS	PART NUMBER
SUPERSEDED	95.50 [3.760]	95.91 [3.776]	24	5-640861-4
	91.54 [3.604]	91.95 [3.620]	23	5-640861-3
	87.58 [3.448]	87.99 [3.464]	22	5-640861-2
	83.62 [3.292]	84.02 [3.308]	21	5-640861-1
	79.65 [3.136]	80.06 [3.152]	20	5-640861-0
	71.73 [2.824]	72.14 [2.840]	18	4-640861-8
	59.84 [2.356]	60.25 [2.372]	15	4-640861-5
	47.96 [1.888]	48.36 [1.904]	12	4-640861-2
	36.07 [1.420]	36.47 [1.436]	9	3-640861-9
	24.18 [.952]	24.59 [.968]	6	3-640861-6
SUPERSEDED	12.29 [.484]	12.70 [.500]	3	3-640861-3
	95.50 [3.760]	95.91 [3.776]	24	2-640861-4
	91.54 [3.604]	91.95 [3.620]	23	2-640861-3
	87.58 [3.448]	87.99 [3.464]	22	2-640861-2
	83.62 [3.292]	84.02 [3.308]	21	2-640861-1
	79.65 [3.136]	80.06 [3.152]	20	2-640861-0
	71.73 [2.824]	72.14 [2.840]	18	1-640861-8
	59.84 [2.356]	60.25 [2.372]	15	1-640861-5
	47.96 [1.888]	48.36 [1.904]	12	1-640861-2
	36.07 [1.420]	36.47 [1.436]	9	640861-9
24.18 [.952]	24.59 [.968]	6	640861-6	
12.29 [.484]	12.70 [.500]	3	640861-3	

METRIC

THIS DRAWING IS A CONTROLLED DOCUMENT. DATE: 12-31-11

DESIGNED BY: SALMON DATE: 12-31-11
 DRAWN BY: SING DATE: 12-31-11

PROJECT NAME: MTA-156
 PROJECT NO: CARD EDGE CONNECTOR ASSEMBLY.

DATE: 12-31-11
 DRAWING NO: A100779
 CUSTOMER DRAWING: G-640861

REVISED BY: SEE NOTE 1
 DATE: 05-11-11