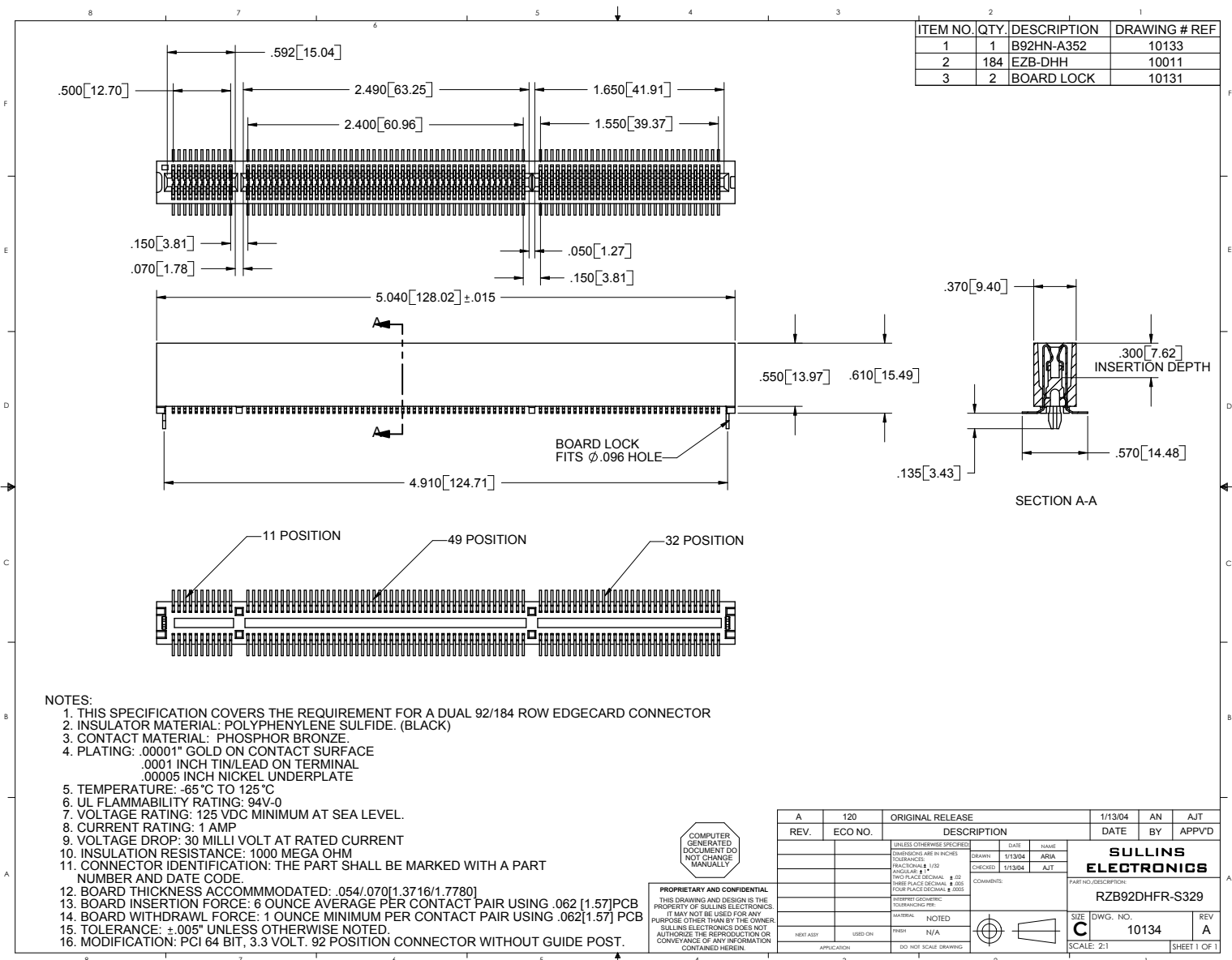


ITEM NO.	QTY.	DESCRIPTION	DRAWING # REF
1	1	B92HN-A352	10133
2	184	EZB-DHH	10011
3	2	BOARD LOCK	10131



- NOTES:
- THIS SPECIFICATION COVERS THE REQUIREMENT FOR A DUAL 92/184 ROW EDGECARD CONNECTOR
 - INSULATOR MATERIAL: POLYPHENYLENE SULFIDE. (BLACK)
 - CONTACT MATERIAL: PHOSPHOR BRONZE.
 - PLATING: .00001" GOLD ON CONTACT SURFACE
.0001 INCH TIN/LEAD ON TERMINAL
.00005 INCH NICKEL UNDERPLATE
 - TEMPERATURE: -65°C TO 125°C
 - UL FLAMMABILITY RATING: 94V-0
 - VOLTAGE RATING: 125 VDC MINIMUM AT SEA LEVEL.
 - CURRENT RATING: 1 AMP
 - VOLTAGE DROP: 30 MILLI VOLT AT RATED CURRENT
 - INSULATION RESISTANCE: 1000 MEGA OHM
 - CONNECTOR IDENTIFICATION: THE PART SHALL BE MARKED WITH A PART NUMBER AND DATE CODE
 - BOARD THICKNESS ACCOMMODATED: .054/.070[1.3716/1.7780]
 - BOARD INSERTION FORCE: 6 OUNCE AVERAGE PER CONTACT PAIR USING .062 [1.57]PCB
 - BOARD WITHDRAWAL FORCE: 1 OUNCE MINIMUM PER CONTACT PAIR USING .062[1.57] PCB
 - TOLERANCE: ±.005" UNLESS OTHERWISE NOTED.
 - MODIFICATION: PCI 64 BIT, 3.3 VOLT, 92 POSITION CONNECTOR WITHOUT GUIDE POST.

COMPUTER GENERATED DOCUMENT DO NOT CHANGE MANUALLY

PROPRIETARY AND CONFIDENTIAL
THIS DRAWING AND DESIGN IS THE PROPERTY OF SULLINS ELECTRONICS. IT MAY NOT BE USED FOR ANY PURPOSE OTHER THAN BY THE OWNER. SULLINS ELECTRONICS DOES NOT AUTHORIZE THE REPRODUCTION OR CONVEYANCE OF ANY INFORMATION CONTAINED HEREIN.

A	120	ORIGINAL RELEASE	1/13/04	AN	AJT
REV.	ECO NO.	DESCRIPTION	DATE	BY	APPVD
		UNLESS OTHERWISE SPECIFIED: DIMENSIONS ARE IN INCHES TOLERANCES: FRACTIONS & .100 ANGULAR ± 1° TWO PLACE DECIMAL ± .02 THREE PLACE DECIMAL ± .005 FOUR PLACE DECIMAL ± .0005	DRAWN 1/13/04 CHECKED 1/13/04	ARIA AJT	
		INTERPRET GEOMETRIC DIMENSIONS PER: MAXIMSA	NOTED		
		NEXT ASSY	USED ON	PRINT	N/A
		APPLICATION	DO NOT SCALE DRAWING		

PART NO./DESCRIPTION:
SULLINS ELECTRONICS
RZB92DHFH-S329

SIZE DWG. NO. REV
C 10134 A

SCALE: 2:1 SHEET 1 OF 1