

## PART NUMBER CODING N\_E140DHHN-T9

REVISIONS				
REV.	ECO. NO	DESCRIPTION	DATE	BY
A	1595	INITIAL RELEASE	04/01/08	VJ
B	1707	UPDATE P/N CODING CHART, PLATING	05/30/08	ASK
C	1946	UPDATE NOTES, COLOR CODE & TOLERANCE BLOCK, TAIL LENGTH OPTION 1 REMOVED	06/26/09	JH

### PLATING

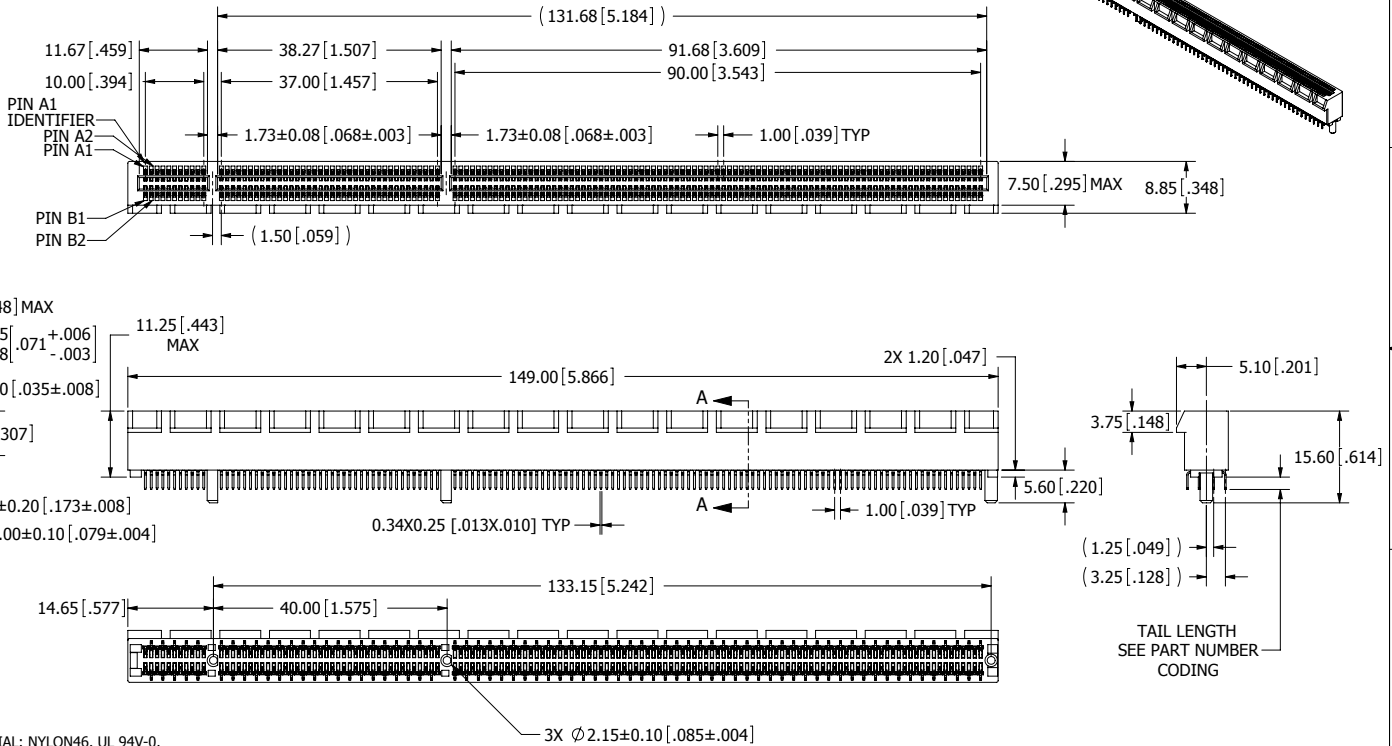
(ALL PLATINGS ARE LEAD FREE AND HAVE 50µ" NICKEL UNDERPLATE)  
 CONTACT SURFACE TERMINATION  
 W = GOLD FLASH .000100" PURE TIN, MATTE  
 B = .000010" GOLD .000100" PURE TIN, MATTE  
 C = .000030" GOLD .000100" PURE TIN, MATTE

### TAIL LENGTH

2=2.54[.100]  
 3=3.00[.118]

### COLOR

1= BLACK  
 6= WHITE



### NOTES:

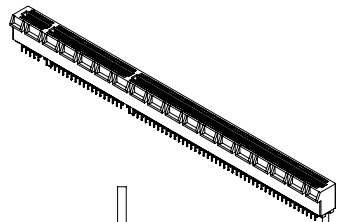
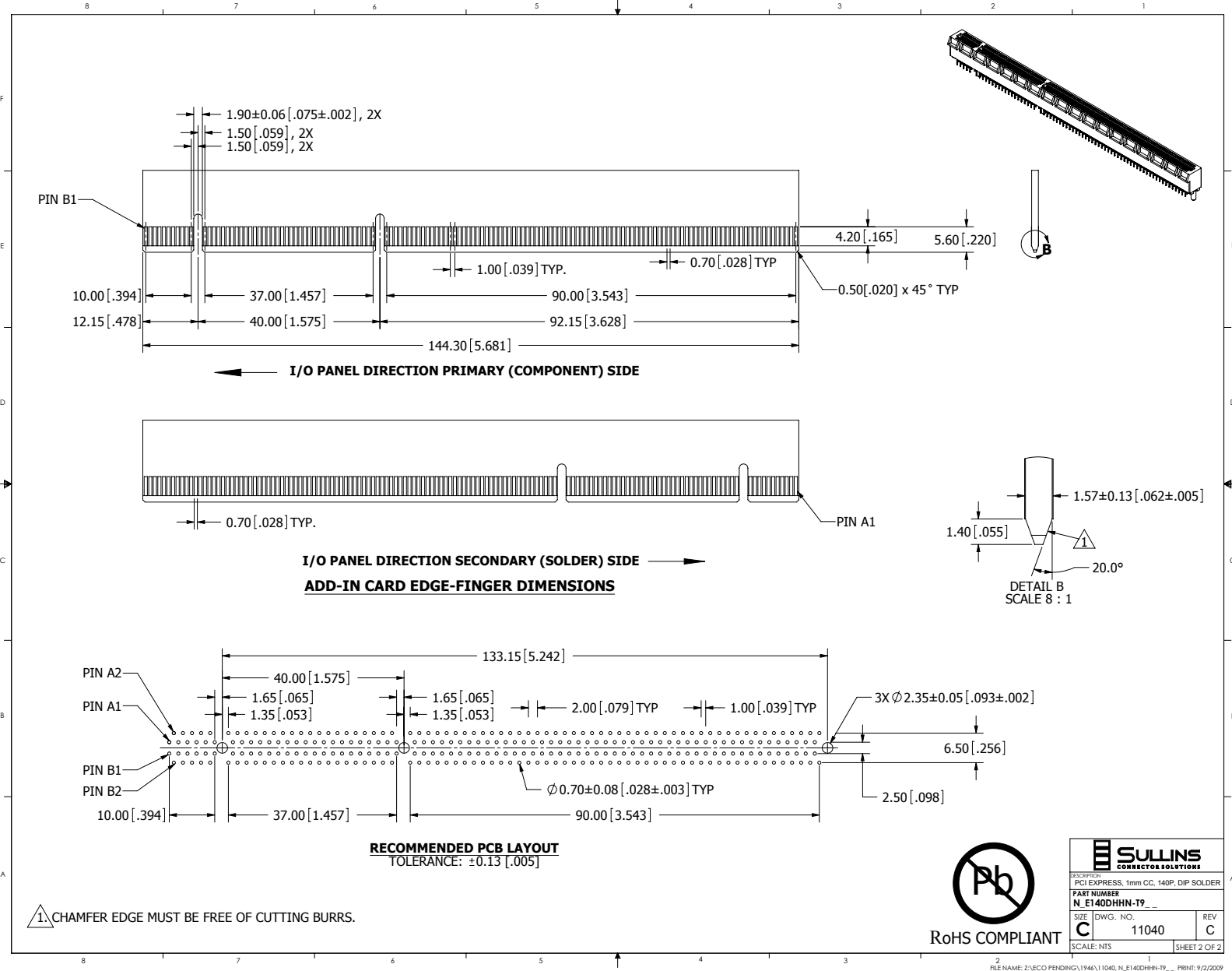
1. INSULATOR MATERIAL: NYLON46, UL 94V-0.
2. CONTACT MATERIAL: PHOSPHOR BRONZE.
3. CONTACT PLATING: SEE PART NUMBER CODING.
4. CURRENT RATING: 1.1 AMP.
5. VOLTAGE RATING: 50 V DC.
6. INSULATOR RESISTANCE: 1000 MEGOHMS MIN.
7. CONTACT RESISTANCE: 30 MILLI OHMS MAX.
8. DIELECTRIC WITHSTANDING: 500V DC.
9. INSERTION FORCE: 117gf (1.15 N) MAX PER CONTACT PAIR USING A 1.7 mm (.067") STEEL CARD.
10. WITHDRAWAL FORCE: 15.3gf (0.15 N) MIN PER CONTACT PAIR USING A 1.44 mm (.057") STEEL CARD.
11. OPERATING TEMPERATURE: -55° C TO +105° C.
12. PROCESSING TEMP.: 260° C FOR 10 SECS MAX.  
 (INDICATED TEMPERATURE AND TIME IS FOR COMPONENT INSULATOR. HIGHER PROCESSING TEMPERATURE MAY BE USED, PROVIDED HEAT IS APPLIED FROM BACK SIDE OF PCB, AND INSULATOR DOES NOT EXCEED INDICATED TEMPERATURE AND TIME.)



RoHS COMPLIANT

UNLESS OTHERWISE SPECIFIED:  
 DIMENSIONS ARE IN MM(INCHES)  
 TOLERANCES:  
 ANGULAR: ± 5°  
 X = + .3 [0.1]  
 YX = ± .25 [0.10]  
 .XX = ± .080 [0.030]  
 SURFACE FINISH: 63 Ra  
 REMOVE ALL BURRS AND SHARP EDGES .010 MAX  
 INTERPRET DIMENSIONS AND GEOMETRIC TOLERANCING PER: ANSI Y14.5M-1994

DATE	NAME	
3/23/09	JH	
THE INFORMATION HEREIN CONTAINS PROPRIETARY INFORMATION OF SULLINS ELECTRONICS AND IS NOT TO BE REPRODUCED, COPIED, OR DISCLOSED TO OTHERS FOR ANY PURPOSE EXCEPT AS SPECIFICALLY AUTHORIZED IN WRITING BY AN OFFICER OF SULLINS ELECTRONICS.		
DESCRIPTION: PCI EXPRESS, 1mm CC, 140P, DIP SOLDER PART NUMBER: N_E140DHHN-T9		
SIZE: C	DWG. NO: 11040	REV: C
SCALE: 1:1		SHEET 1 OF 2



<small>DESCRIPTION</small> PCI EXPRESS, 1mm CG, 140P, DIP SOLDER	
<small>PART NUMBER</small> <b>N_E140DHHN-T9</b>	
<small>SIZE</small> <b>C</b>	<small>DWG. NO.</small> 11040
<small>SCALE</small> NTS	<small>REV</small> C
<small>SHEET 2 OF 2</small>	