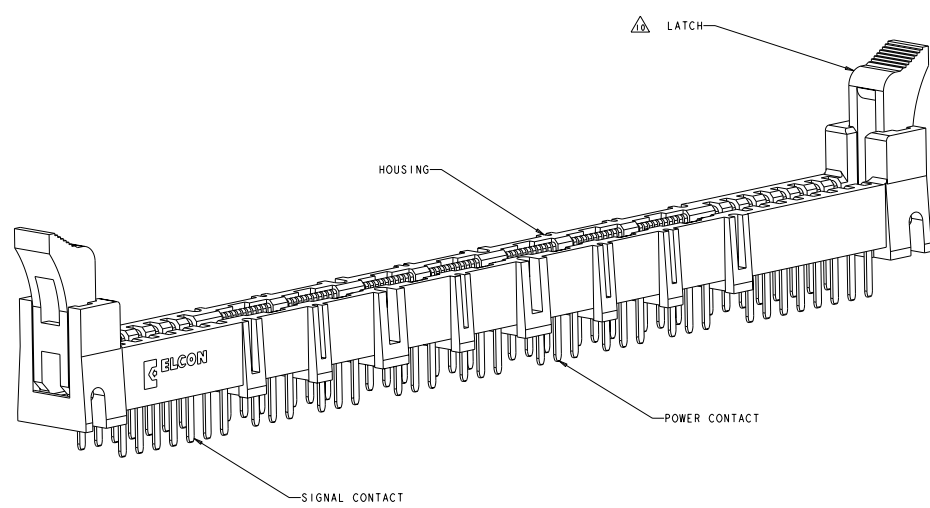


REV	DATE	DESCRIPTION	BY	CHK	APP
00		REV PER ECO-09-027020	BLANDIN	RG	MS



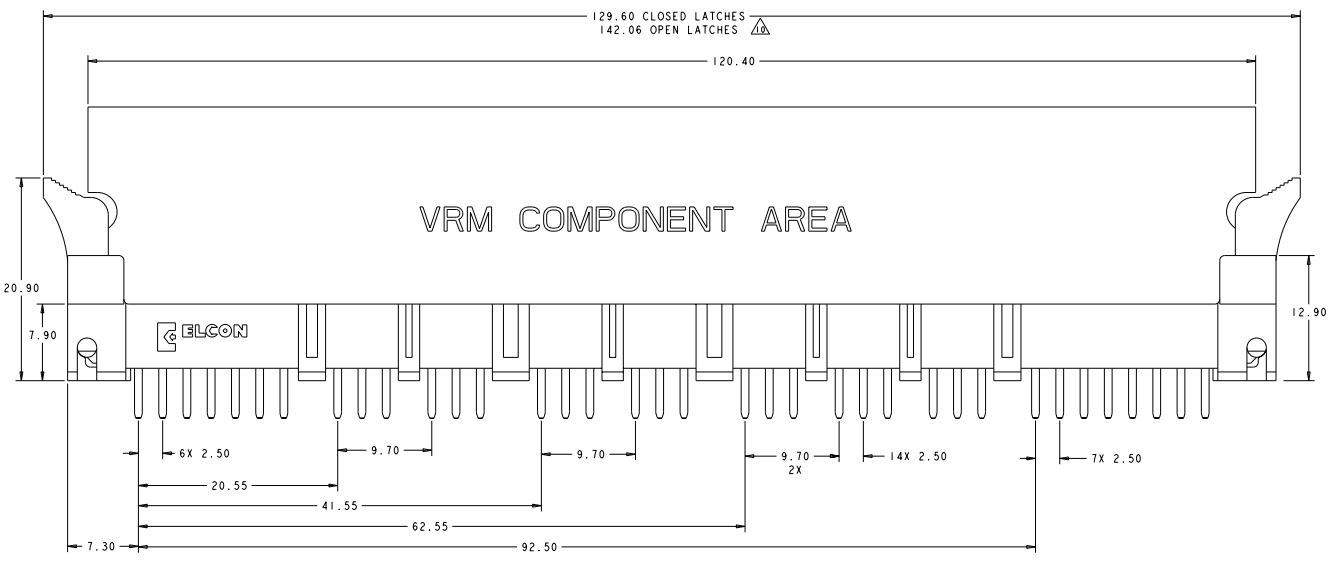
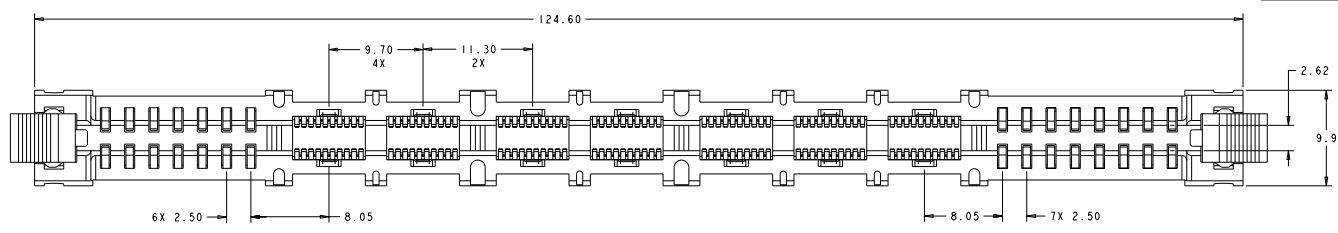
- PART NUMBER CHANGES AND OR DESIGN CHANGES AFFECTING ITEM INTERCHANGEABILITY REQUIRE PRIOR TYCO ELECTRONICS APPROVAL AND AUTHORIZATION BY REVISION TO THIS DRAWING.
- MATERIAL:
 - HOUSING: GLASS FILLED POLYESTER, COLOR-BLACK UL94V-0 FLAMMABILITY RATED
 - LATCHES: THERMOPLASTIC, GLASS REINFORCED COLOR: BLACK, UL94V-0 FLAMMABILITY RATED
 - CONTACTS: COPPER ALLOY
 - FINISH:
 - CONTACTS:
 - GOLD PLATE 0.76µm MIN THK. OVER
 - NICKEL 1.27µm MIN THK.
 - SOLDER TAILS - TIN PLATE 3.05µm MIN THK. OVER
 - NICKEL 1.27µm MIN THK.
- ITEMS PROVIDED TO THIS SPECIFICATION TO BE PERMANENTLY IDENTIFIED WITH PART NUMBER AND DATE CODE.
 - MAXIMUM BURR OF 0.013 ON CARD TAB AREA.
 - SET TRACE BACK FROM PC BOARD EDGE. NO SOLDERMASK ALLOWED BETWEEN PC BOARD EDGE AND TRACE.
 - CONNECTOR ACCEPTS 2.36±0.13 THICK PC BOARD.
 - KEEP OUT AREA FOR COMPONENTS ONLY.
 - FEATURE REQUIRED FOR USE WITH LATCH.
 - CAUTION: LATCHES ARE INTENDED FOR RETENTION OF PC BOARD TO CONNECTOR. DO NOT ATTEMPT TO FULLY EJECT PC BOARD FROM CONNECTOR WHILE DISENGAGING LATCHES, DAMAGE TO LATCHES AND OR CONNECTOR MAY OCCUR.
 - RECOMMENDED GOLD FINGER LENGTH FOR RELIABLE CONTACT.
- FOR DESIGN OBJECTIVES SEE 108-2301.
 - RECOMMENDED PRINTED CIRCUIT HOLE:
 - FINISHED HOLE: Ø1.02 ±.08
 - DRILLED HOLE: Ø1.15 ±.013
 - COPPER PLATE: .025 MIN. (PER SURFACE)
 - TIN PLATE: .008 MIN. (PER SURFACE)
- DATUMS AND BASIC DIMENSIONS ESTABLISHED BY CUSTOMER

AS SHOWN	1766308-1
DESCRIPTION	PART NO.

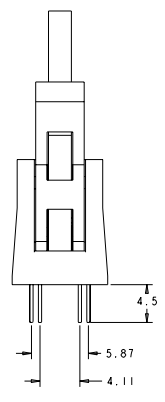
DATE: 09/27/09 DRAWN BY: J. J. J.		CHECKED BY: J. J. J.		APPROVED BY: J. J. J.	
TITLE: SOCKET CONNECTOR ASSEMBLY W/ LATCHES MC-P14330 MINI-CROWN EDGE		PART NO.: 1766308		REV: A	
MATERIAL: COPPER ALLOY		FINISH: GOLD PLATE 0.76µm MIN THK. OVER NICKEL 1.27µm MIN THK.		CUSTOMER DRAWING	

DATE SHOWN IN DIMENSIONS RECEIVED FOR FABRICATION
 BY THIS ELECTRONICS CORPORATION. ALL RIGHTS RESERVED

REV. NO.		REVISIONS	
NO.	DATE	DESCRIPTION	BY
GP	00	SEE SHEET 1	

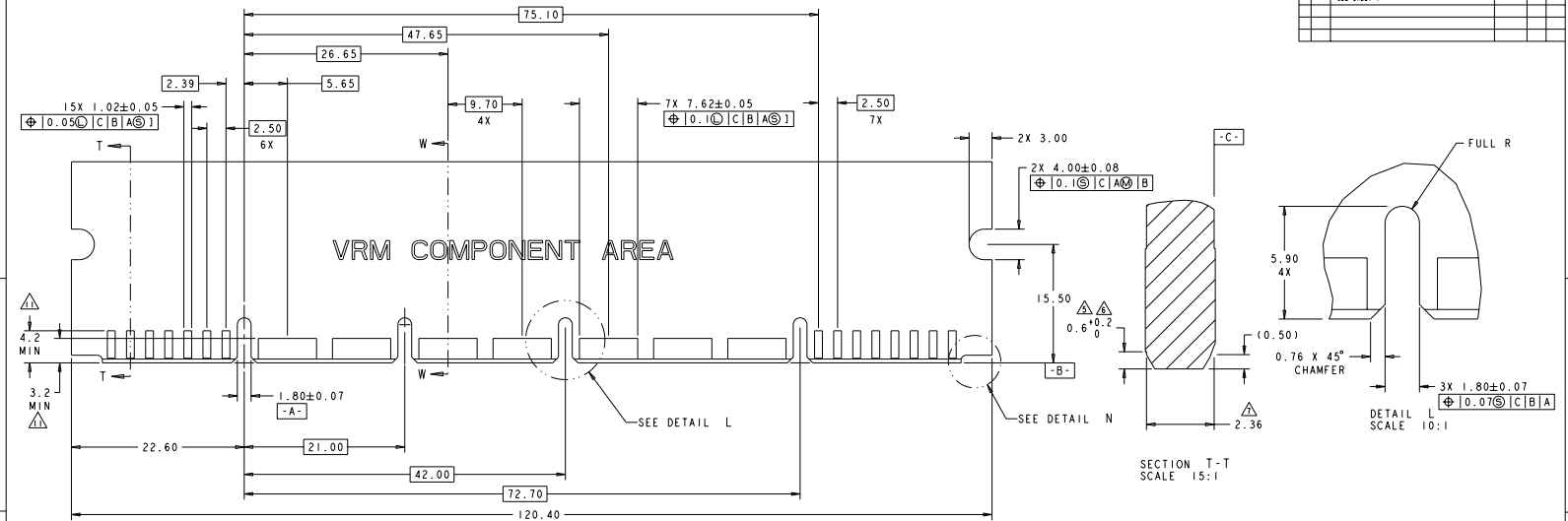


VRM COMPONENT AREA

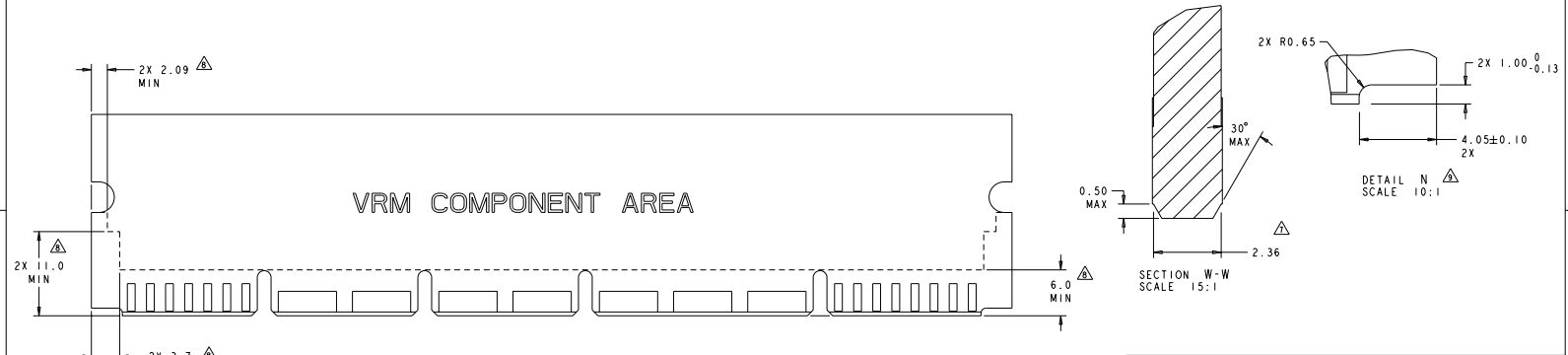


DRAWING NO. 00779 REV. 00		QUANTITY 1000 DATE 01/15/00		DRAWN BY J. J. JONES CHECKED BY J. J. JONES		DESIGNED BY J. J. JONES DATE 01/15/00		TITLE SOCKET CONNECTOR ASSEMBLY W/ LATCHES MC-P14330 MINI-CROWN EDGE	
MATERIAL 1.0 FINISH 1.0		SPECIFICATION SPEC. 1.0		STATE CASE CODE DRAWING NO. A 00779		WEIGHT 1.0 CUSTOMER DRAWING		PART NUMBER 100 SHEET 5 OF 24	

REV	DATE	DESCRIPTION	BY	CHK	APP
00		SEE SHEET 1			



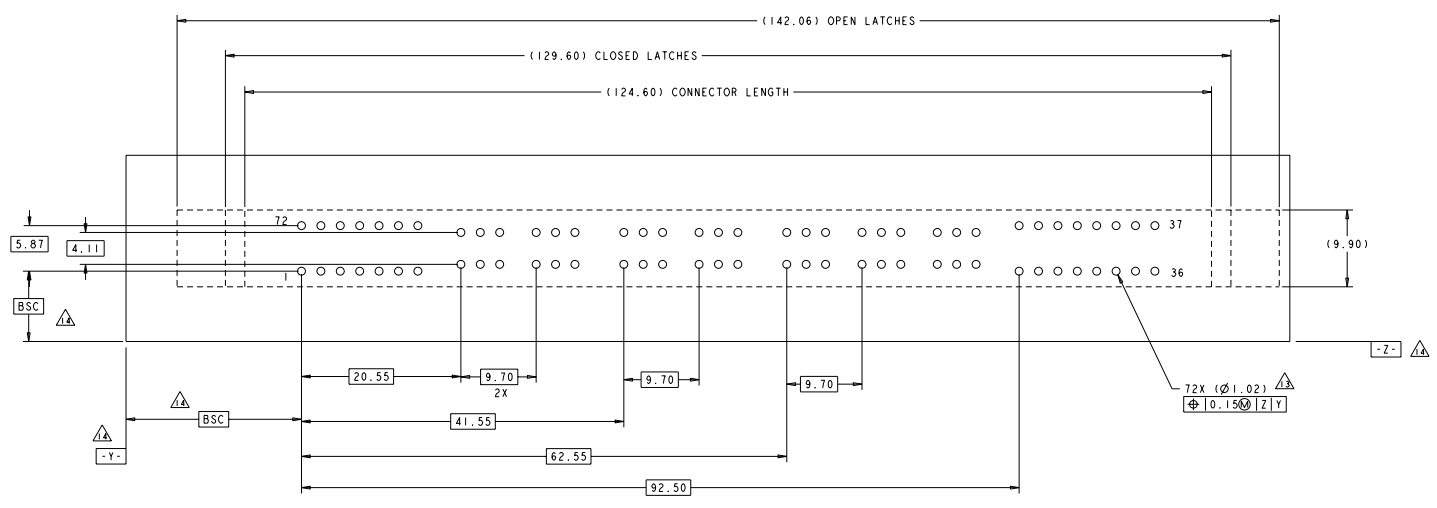
RECOMMENDED MATING BOARD



RECOMMENDED PC BOARD KEEP OUT AREA

DATE: 08/24/22	BY: TSC ELECTRONICS COMPANY	REV: 00	DESCRIPTION: SOCKET CONNECTOR ASSEMBLY WITH LATCHES MC-P14330 MINI CROWN EDGE	SCALE: 5:1	SHEET: 3 OF 4
----------------	-----------------------------	---------	---	------------	---------------

REV	DATE	DESCRIPTION	BY	CHK
00		SEE SHEET 1		



RECOMMENDED P.C. BOARD GUIDELINE AS VIEWED FROM CONNECTOR SIDE

REVISED DATE: 08/24/2016 BY: TSC ELECTRONICS CORPORATION ALL RIGHTS RESERVED		REVISED DATE: 08/24/2016 BY: TSC ELECTRONICS CORPORATION ALL RIGHTS RESERVED		REVISED DATE: 08/24/2016 BY: TSC ELECTRONICS CORPORATION ALL RIGHTS RESERVED	
DRAWING NO: 00779		PART NO: MC-P14330		TITLE: SOCKET CONNECTOR ASSEMBLY W/LATCHES	
CUSTOMER DRAWING		DRAWN BY: TSC ELECTRONICS CORPORATION		CHECKED BY: TSC ELECTRONICS CORPORATION	
DATE: 08/24/2016		DATE: 08/24/2016		DATE: 08/24/2016	
BY: TSC ELECTRONICS CORPORATION		BY: TSC ELECTRONICS CORPORATION		BY: TSC ELECTRONICS CORPORATION	
TSC ELECTRONICS CORPORATION HARRISBURG, PA 17105-3600		TSC ELECTRONICS CORPORATION HARRISBURG, PA 17105-3600		TSC ELECTRONICS CORPORATION HARRISBURG, PA 17105-3600	