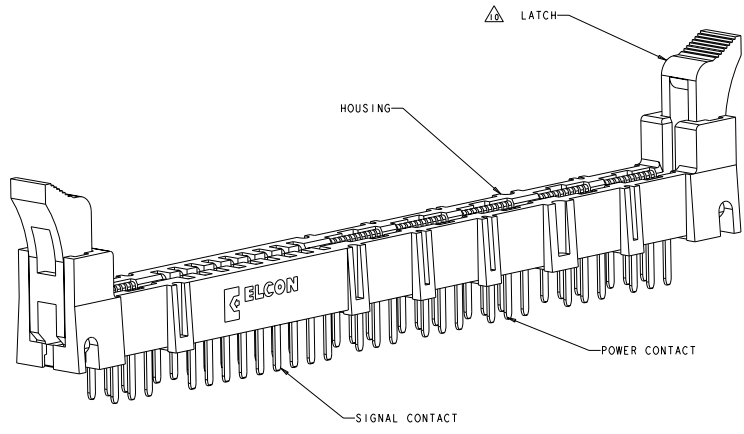


REV	DATE	DESCRIPTION	BY	CHK	APP
C	REV PER ECO-08-031660				



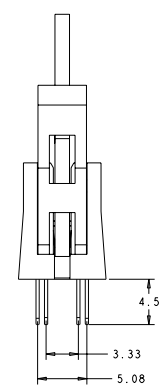
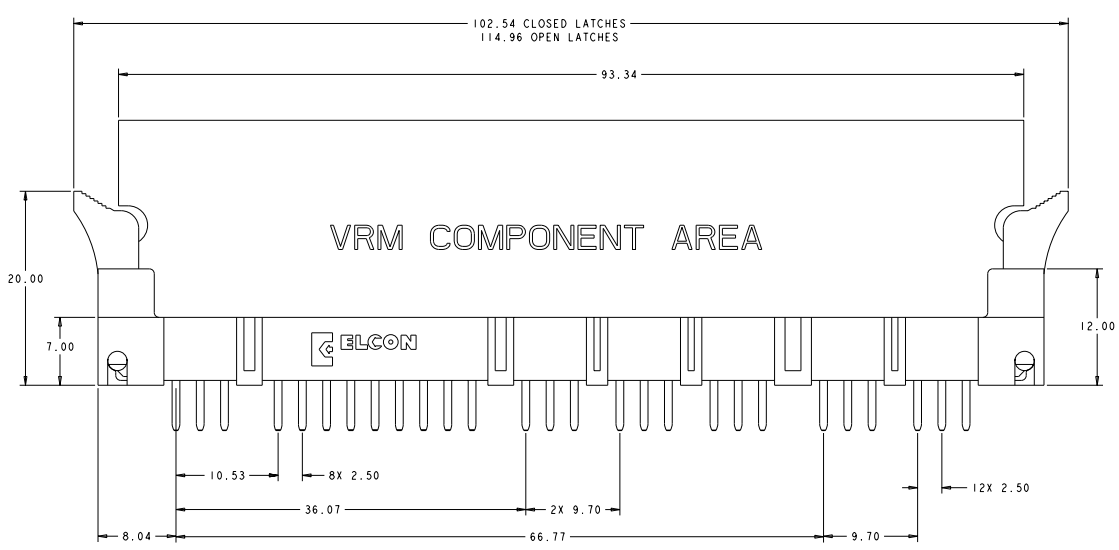
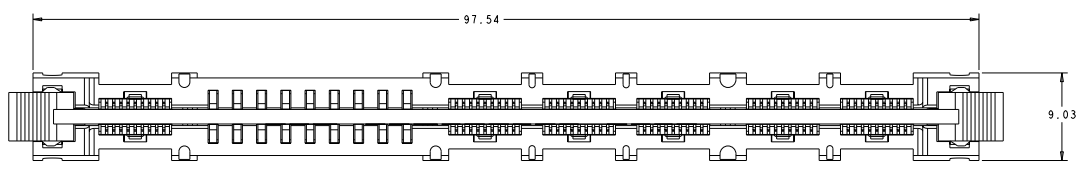
- PART NUMBER CHANGES AND OR DESIGN CHANGES AFFECTING ITEM INTERCHANGEABILITY REQUIRE PRIOR TYCO ELECTRONICS APPROVAL AND AUTHORIZATION BY REVISION TO THIS DRAWING.
- △ MATERIAL:
HOUSING: GLASS FILLED POLYESTER, COLOR-BLACK
UL94V-0 FLAMMABILITY RATED
LATCHES: THERMOPLASTIC, GLASS REINFORCED
COLOR: BLACK, UL94V-0 FLAMMABILITY RATED
CONTACTS: COPPER ALLOY
 - △ FINISH:
SIGNAL CONTACTS:
MATING AREA-0.76µm MIN GOLD OVER 3.81µm MIN NICKEL
0.64µm MIN NICKEL PLATE OVER REMAINDER
SMT TAILS-3.81µm MIN MATTE TIN OVER NICKEL PLATE
POWER CONTACTS:
1.27µm MIN NICKEL PLATE ALL OVER
MATING AREA-0.76µm MIN GOLD OVER NICKEL PLATE
SMT TAILS-3.05µm MIN TIN OVER NICKEL PLATE
- ITEMS PROVIDED TO THIS SPECIFICATION TO BE PERMANENTLY IDENTIFIED WITH PART NUMBER AND DATE CODE.
- △ MAXIMUM BURR OF 0.013 ON CARD TAB AREA.
 - △ SET TRACE BACK FROM PC BOARD EDGE. NO SOLDERMASK ALLOWED BETWEEN PC BOARD EDGE AND TRACE.
 - △ CONNECTOR ACCEPTS 1.57±0.13 THICK PC BOARD.
 - △ KEEP OUT AREA FOR COMPONENTS ONLY.
 - △ FEATURE REQUIRED FOR USE WITH LATCH.
 - △ CAUTION:
LATCHES ARE INTENDED FOR RETENTION OF PC BOARD TO CONNECTOR. DO NOT ATTEMPT TO FULLY EJECT PC BOARD FROM CONNECTOR WHILE DISENGAGING LATCHES, DAMAGE TO LATCHES AND OR CONNECTOR MAY OCCUR.
 - △ RECOMMENDED GOLD FINGER LENGTH FOR RELIABLE CONTACT.
- FOR DESIGN OBJECTIVES SEE 108-2301.
- △ RECOMMENDED PRINTED CIRCUIT HOLE:
FINISHED HOLE: Ø1.02 ±.08
DRILLED HOLE: Ø1.15 ±.013
COPPER PLATE: .025 MIN. (PER SURFACE)
TIN PLATE: .008 MIN (PER SURFACE)

AS SHOWN	1651826-1
DESCRIPTION	PART NO.

DATE: 07/25/05 DRAWN BY: [Signature] CHECKED BY: [Signature]		Tyco Electronics Harrisburg, PA 17105-3600	
SOCKET CONNECTOR ASSEMBLY W/LATCHES MC-P659 MINI CROWN EDGE		STATE: PA CUSTOMER DRAWING	

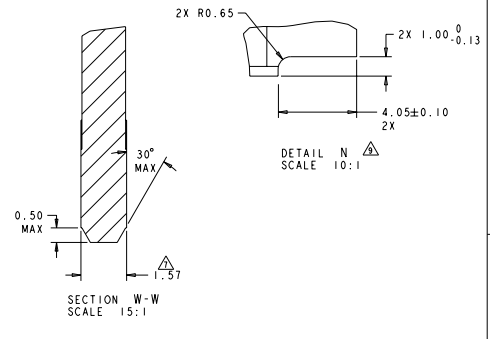
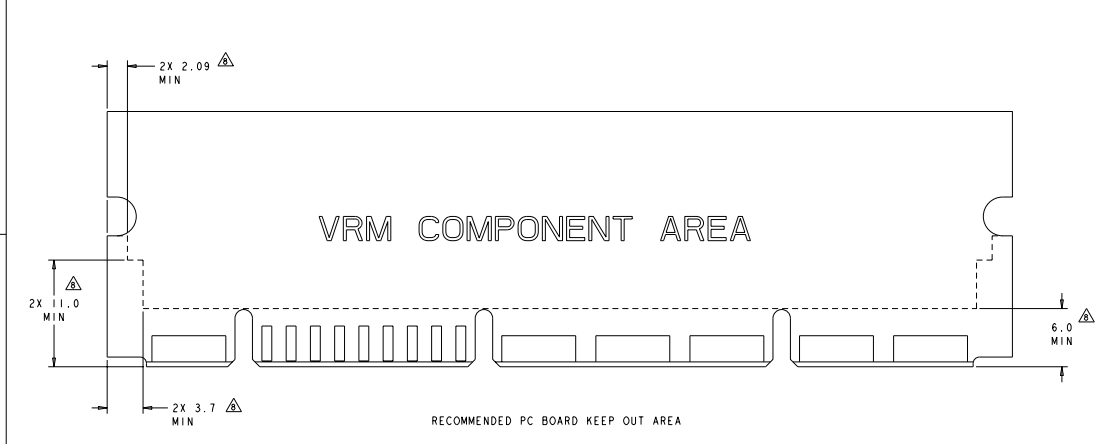
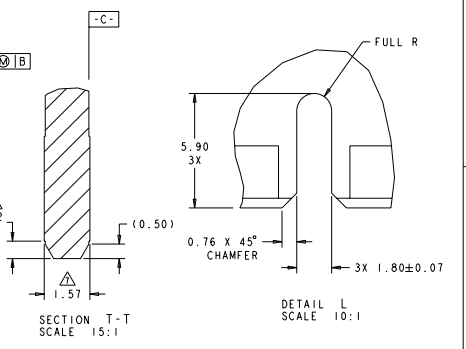
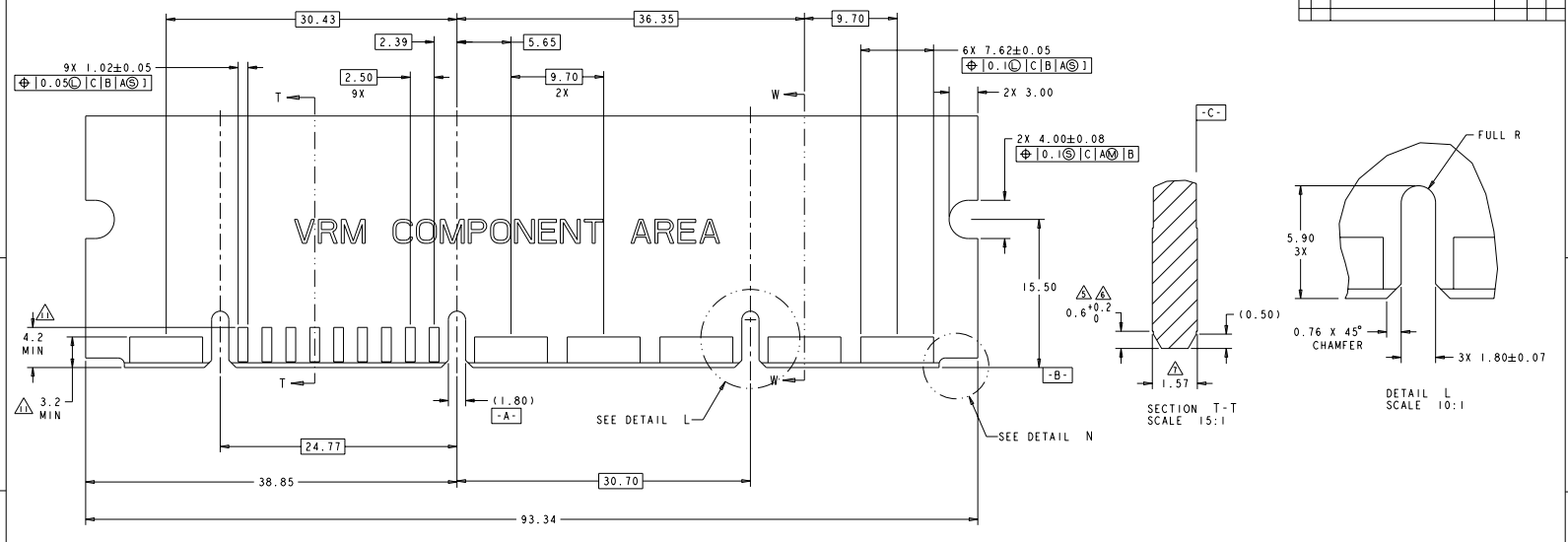
DATE: 08/24/2016 BY: TFCB ELECTRONICS CORPORATION ALL RIGHTS RESERVED

REV	DATE	DESCRIPTION	BY	CHK	APP
00		SEE SHEET 1			



DATE: 08/24/2016 BY: TFCB ELECTRONICS CORPORATION ALL RIGHTS RESERVED		DRAWING NO: 00779		REV: 00	
TITLE: SOCKET CONNECTOR ASSEMBLY		PART NO: 1651826		QUANTITY: 100	
MATERIAL:		FINISH:		TOLERANCE:	
CUSTOMER DRAWING:		DRAWN BY:		CHECKED BY:	

REV	DATE	DESCRIPTION	BY	CHK	APP
00		SEE SHEET 1			

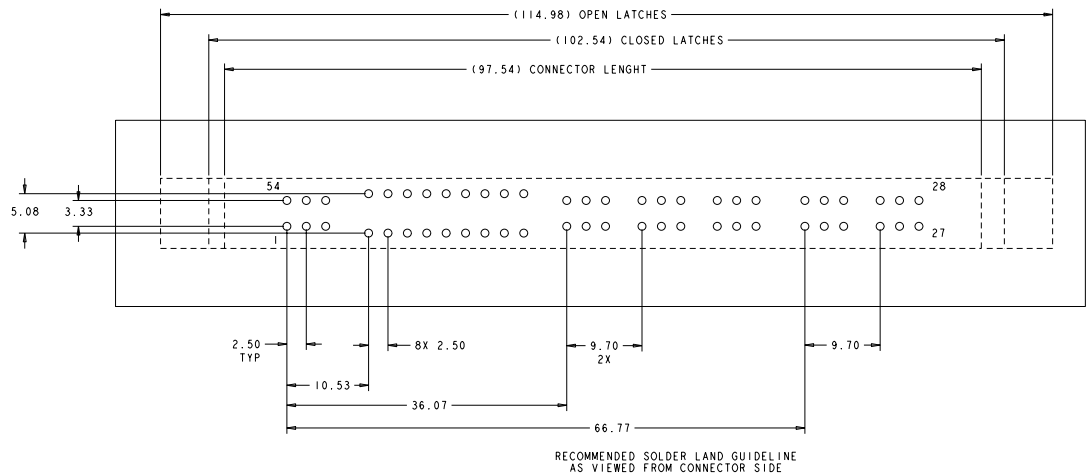


REV	DATE	DESCRIPTION	BY	CHK	APP
00		SEE SHEET 1			

DATE	SCALE	DATE	SCALE
00779	1651826		

DATE SUBMITTED TO MANUFACTURER: RECEIVED FOR FABRICATION: BY THIS ELECTRONICS COMPANY, ALL RIGHTS RESERVED.

REV. NO.		REVISIONS	
DATE	BY	DESCRIPTION	DATE
GP	00	SEE SHEET 1	



RECOMMENDED SOLDER LAND GUIDELINE AS VIEWED FROM CONNECTOR SIDE

DATE: 07/25/05		Tape Electronics Harrisburg, PA 17105-3600	
DESIGNER: mm	DATE: 07/25/05	BY: mm	DATE: 07/25/05
CHECKED: mm	DATE: 07/25/05	APPROVED: mm	DATE: 07/25/05
PART: SOCKET CONNECTOR ASSEMBLY WITH LATCHES		PART: SOCKET CONNECTOR ASSEMBLY WITH LATCHES	
MATERIAL: MC-P659 MINI CROWN EDGE		MATERIAL: MC-P659 MINI CROWN EDGE	
DRAWING NO: 00779		DRAWING NO: 00779	
CUSTOMER DRAWING		CUSTOMER DRAWING	