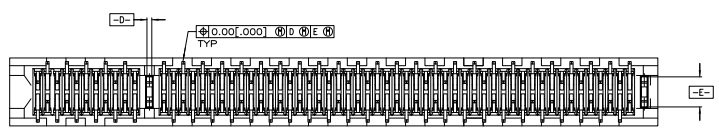
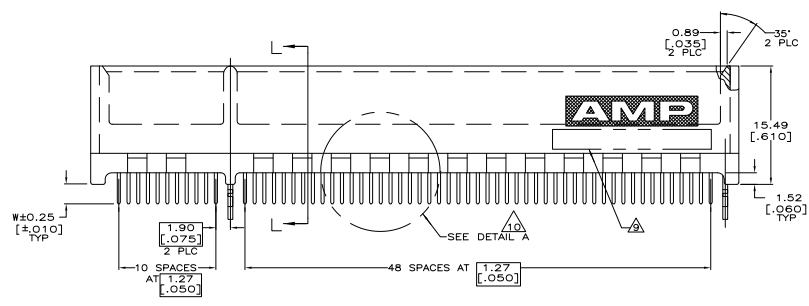
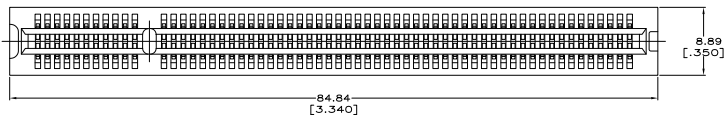
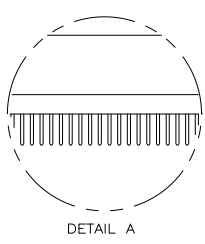


THIS DRAWING IS UNPUBLISHED  
 ALL RIGHTS RESERVED

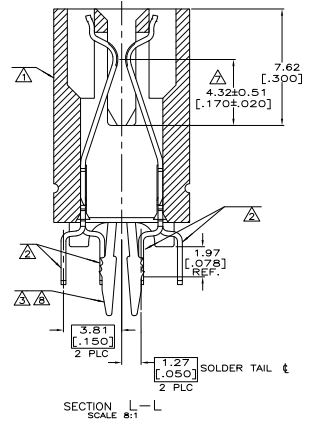
REV	DATE	DESCRIPTION	BY	CHK
00	11/11/93	REVISED PER EDD-11-005033	23MHR11	RK HMR



SEE SHEET 2 FOR HOLE PATTERN



- △ HOUSING: HIGH TEMPERATURE THERMOPLASTIC.  
COLOR = NATURAL.
- △ CONTACT: PHOSPHOR BRONZE.
- △ METAL HOLD DOWN: BRASS
- △ CONTACT FINISH: .001269[.000050] MIN NICKEL ALL OVER.  
GOLD FLASH OVER NICKEL IN CONTACT AREA.
- △ CONTACT FINISH: .001269[.000050] MIN NICKEL ALL OVER.  
.002537[.000100] MIN MATTE TIN OVER NICKEL ON SOLDER TAILS.
- △ CONTACT FINISH: .001269[.000050] MIN NICKEL ALL OVER.  
.000375[.000015] GOLD OVER NICKEL IN CONTACT AREA.
- △ CONTACT FINISH: .001269[.000050] MIN NICKEL ALL OVER.  
.002537[.000100] MIN MATTE TIN OVER NICKEL ON SOLDER TAILS.
- △ CONTACT FINISH: .001269[.000050] MIN NICKEL ALL OVER.  
.000737[.000030] GOLD OVER NICKEL IN CONTACT AREA.
- △ CONTACT FINISH: .001269[.000050] MIN NICKEL ALL OVER.  
.002537[.000100] MIN MATTE TIN OVER NICKEL ON SOLDER TAILS.
- △ DISTANCE FROM CONTACT POINT TO BOTTOM OF CARD SLOT.
- △ METAL HOLD DOWN FINISH: .001269[.000050] MIN NICKEL ALL OVER.  
.003809[.000150] MIN MATTE TIN ALL OVER.
- △ AMP PART NUMBER, DATE CODE AND CSA LOGO MARKED IN APPROXIMATE LOCATION SHOWN.
- △ CORED OR SOLID SIDE WALLS ARE AT DISCRETION OF AMP INCORPORATED.
- △ OBSOLETE PARTS: OBSOLETE CIS STREAMLINING PER D.RENAUD/D.SINISI



SECTION L-L  
SCALE 8:1

OBSOLETE	4.70 F.185	△	1-5145167-3
	3.56 F.140	△	1-5145167-2
	3.18 F.125	△	5145167-8
	2.54 F.100	△	5145167-4
OBSOLETE	2.54 F.100	△	5145167-3
OBSOLETE	2.54 F.100	△	5145167-2
OBSOLETE	2.54 F.100	△	5145167-1
	W	FINISH	PART NUMBER

THIS DRAWING IS A CONTROLLED DOCUMENT.

REV	DATE	DESCRIPTION	BY	CHK
00	11/11/93	REVISED PER EDD-11-005033	23MHR11	RK HMR

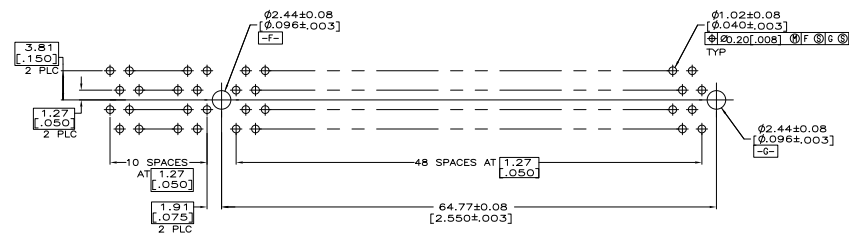
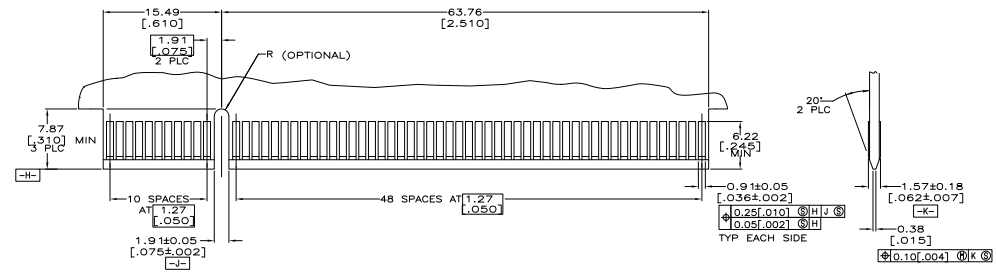
INCHES: 1:1  
 MILLIMETERS: 1:1

PROJECT: 108-14034  
 OPERATOR: 114-26012

DATE: 11/11/93  
 SIZE: A1  
 DRAWING NO: 00779  
 CUSTOMER DRAWING: 5145167

TE Connectivity  
 CONNECTOR ASSEMBLY, 60 DUAL POSITION,  
 1.27 [0.050] SERIES, STANDARD EDGE

REVISIONS: 4.1, 1.2, 0.2



THIS DRAWING IS A CONTROLLED DOCUMENT.		REV. FRANKLUM 11 JUN 93	TE Connectivity	
DRAWING NO. 108-14034		DATE 11 JUN 93	CONNECTOR ASSEMBLY, 60 DUAL POSITION, 1.27 [0.050] SERIES, STANDARD EDGE	
PROJECT FILE 114-26012		SIZE A1	DATE 08/12/93	DRAWING NO. 00779
CUSTOMER DRAWING		REV. 4.1	SHEET 2	TOTAL SHEETS 2