

**PART NUMBER CODING**

M DSE S

**MATERIAL (INSULATOR/CONTACT)**

**E = PBT/PHOSPHOR BRONZE**

OPERATING TEMP: -65°C TO +125°C @ 3 AMPS PER CONTACT  
 OPERATING TEMP: -65°C TO +105°C @ 5 AMPS PER CONTACT  
 PROCESSING TEMP: 260°C FOR 10 SECS MAX

**R = PPS/PHOSPHOR BRONZE**

OPERATING TEMP: -65°C TO +125°C  
 PROCESSING TEMP: 260°C FOR 120 SECS MAX  
 CURRENT RATING PER CONTACT : 5 AMPS

**G = PA9T/PHOSPHOR BRONZE**

OPERATING TEMP: -65°C TO +125°C  
 PROCESSING TEMP: 260°C FOR 120 SECS MAX  
 CURRENT RATING PER CONTACT : 5 AMPS

**H = PBT/BERYLLIUM COPPER**

OPERATING TEMP: -65°C TO +125°C @ 3 AMPS PER CONTACT  
 OPERATING TEMP: -65°C TO +105°C @ 5 AMPS PER CONTACT  
 PROCESSING TEMP: 260°C FOR 10 SECS MAX

**A = PPS/BERYLLIUM COPPER**

OPERATING TEMP: -65°C TO +150°C  
 PROCESSING TEMP: 260°C FOR 120 SECS MAX  
 CURRENT RATING PER CONTACT : 5 AMPS

**J = PA9T/BERYLLIUM COPPER**

OPERATING TEMP: -65°C TO +150°C  
 PROCESSING TEMP: 260°C FOR 120 SECS MAX  
 CURRENT RATING PER CONTACT : 5 AMPS

**F = PPS/SPINODAL (CONSULT FACTORY)**

AVAILABLE IN OVERALL GOLD ONLY (S OR M PLATING CODE)  
 OPERATING TEMP: -65°C TO +200°C  
 PROCESSING TEMP: 260°C FOR 120 SECS MAX  
 CURRENT RATING PER CONTACT : 5 AMPS

**C = PPS/BERYLLIUM NICKEL (CONSULT FACTORY)**

AVAILABLE IN OVERALL GOLD ONLY (S OR M PLATING CODE)  
 OPERATING TEMP: -65°C TO +200°C  
 PROCESSING TEMP: 260°C FOR 120 SECS MAX  
 CURRENT RATING PER CONTACT : 5 AMPS

**W = PEEK/BERYLLIUM NICKEL (CONSULT FACTORY)**

AVAILABLE IN OVERALL GOLD ONLY (S OR M PLATING CODE)  
 OPERATING TEMP: -65°C TO +250°C  
 CURRENT RATING PER CONTACT : 3 AMPS

**MODIFICATION CODE**

- OMIT FOR STANDARD, EX: "E8M22DSEH"  
 -S38 = BLACK PBT (MATERIAL CODE E AND H ONLY)  
 -S81 = GREEN PBT (MATERIAL CODE E AND H ONLY)  
 -S328 = BROWN PPS (MATERIAL CODE R AND A ONLY)  
 -S73 = BOARD INSERTION FORCE OF 8 OZ MAX

**MOUNTING STYLE**

H = .125" DIA. CLEARANCE HOLES (PAGE 2)  
 I = #4-40 THREADED INSERT (PAGE 2)  
 S = .125" DIA. SIDE MOUNTING (PAGE 2)  
 N = NO MOUNTING EARS (PAGE 2)  
 F = FLOATING BOBBIN (PAGE 2)

**NUMBER OF POSITIONS (CONTACTS PER ROW)**

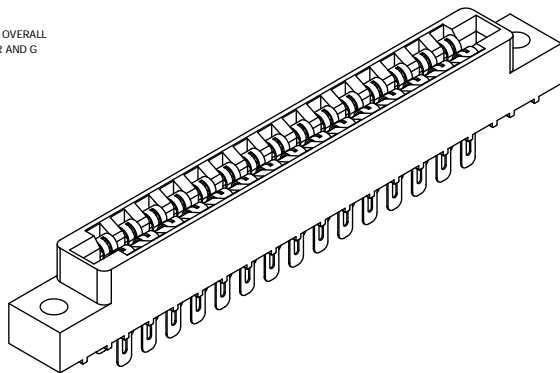
**PLATING**

ALL PLATINGS ARE LEAD FREE AND HAVE .000050" NICKEL UNDERPLATE

<b>CONTACT SURFACE</b>	<b>TERMINATION</b>
G = .000010" GOLD	.000005" GOLD
Y = .000030" GOLD	.000005" GOLD
B = .000010" GOLD	.000100" PURE TIN, MATTE
C = .000030" GOLD	.000100" PURE TIN, MATTE
**E = .000100" PURE TIN, MATTE, OVERALL	
S = .000010" GOLD OVERALL	.000010" GOLD OVERALL
M = .000030" GOLD	
** OVERALL TIN ONLY AVAILABLE ON MATERIAL CODES E, R AND G	

**REVISIONS**

REV.	ECO. NO	DESCRIPTION	DATE	BY
A	1518	INITIAL RELEASE	10/16/2007	SB
B	1772	UPDATE FORMAT, EDIT MATERIAL C AND W	07/30/2008	IA
C	1794	UPDATE FORMAT ADD EXISTING S# TO STANDARD	8/28/2008	ASK



**NOTES:**

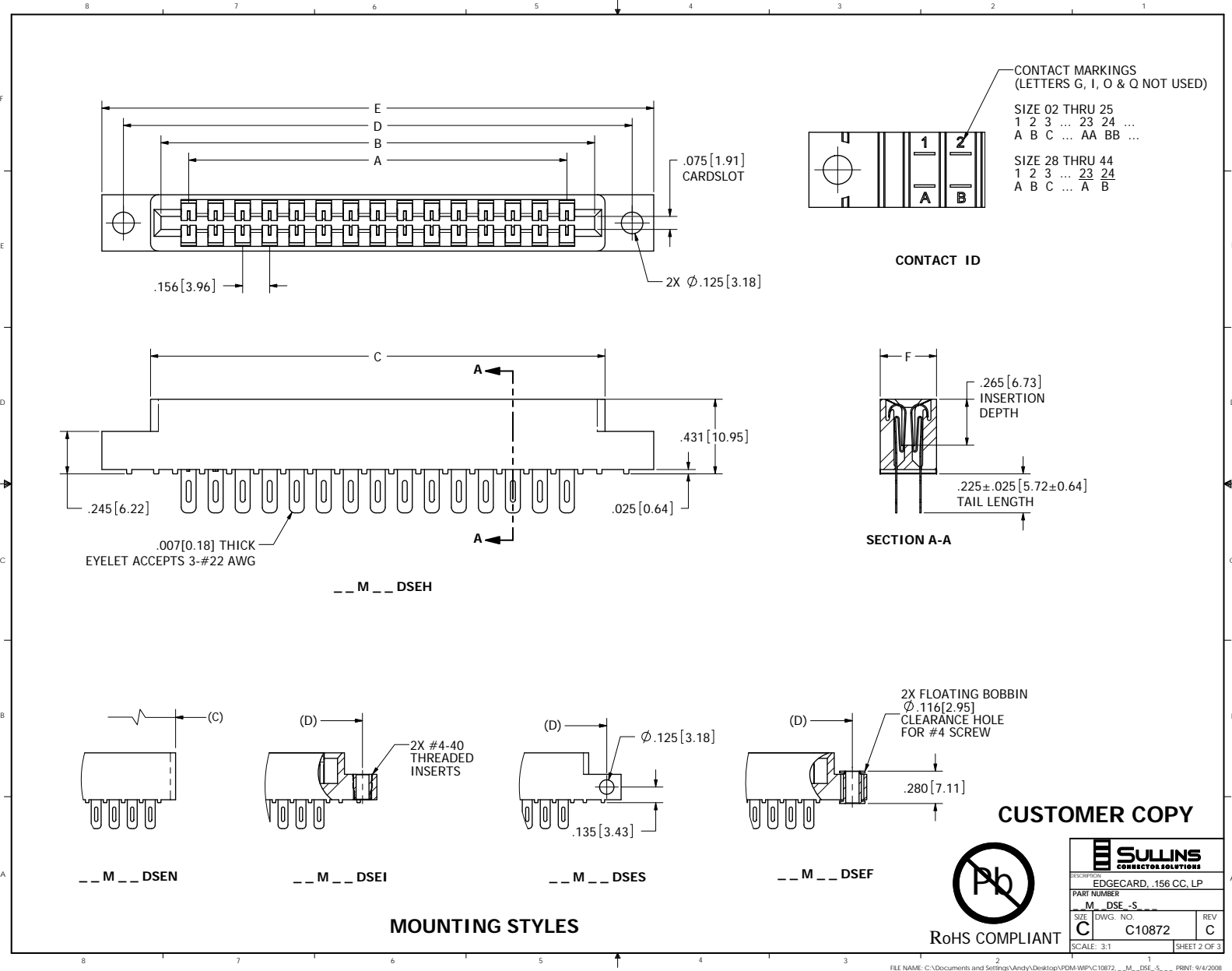
- MATERIALS:**
  - INSULATOR: SEE PART NUMBER CODING.
  - CONTACT: SEE PART NUMBER CODING.
  - PLATING: SEE PART NUMBER CODING.
- THERMAL:**
  - OPERATING TEMPERATURE: SEE PART NUMBER CODING.
  - PROCESSING TEMP: SEE PART NUMBER CODING.
  - UL FLAMMABILITY RATING: 94V-0.
- ELECTRICAL:**
  - DIELECTRIC WITHSTANDING VOLTAGE: MATED CONNECTOR MUST EXHIBIT NO EVIDENCE OF BREAKDOWN, FLASHOVER, OR DETERIORATION FROM AN APPLIED VOLTAGE OF 750 VAC (VALUE HAS BEEN DE-RATED), RMS 60 HZ WHEN TESTED IN ACCORDANCE WITH MIL-STD-1344, METHOD 3001. DURATION OF APPLICATION SHALL BE 5 SECS MIN.
  - INSULATION RESISTANCE (IR): 5,000 MEGOHMS @ 500 VOLTS ±10% WHEN TESTED IN ACCORDANCE WITH MIL-STD-1344, METHOD 3003 @ 25°C.
  - CONTACT RESISTANCE: 30 MILLIOHM MAX AT RATED CURRENT WHEN TESTED PER MIL-STD-202, METHOD 307 @ 25°C ±3°C.
  - CURRENT RATING: SEE PART NUMBER CODING.
- MECHANICAL:**
  - CONNECTOR IDENTIFICATION: THE PART SHALL BE MARKED WITH A LOT CODE AS A MINIMUM. IF SPACE PERMITS ALSO MARK PART WITH SULLINS WEBSITE, AND PART NUMBER.
  - DURABILITY: 500 CYCLES MINIMUM.
  - BOARD THICKNESS ACCOMMODATED: .062 ± .008"
  - BOARD INSERTION FORCE: 16 OZ MAX PER CONTACT PAIR WHEN USING A .062" TEST BLADE.
  - BOARD WITHDRAWAL FORCE: 1 OUNCE MINIMUM PER CONTACT PAIR USING .062" PCB
- OPTIONAL MODIFICATIONS:**
  - SEE PART NUMBER CODING



RoHS COMPLIANT

**CUSTOMER COPY**

UNLESS OTHERWISE SPECIFIED: DIMENSIONS ARE IN INCHES(MM)		DATE	NAME
TOLERANCES: ANGULAR: ± .30° XX = ± .02   .508 XXX = ± .005   12701 XXXX = ± .0005   0127 SURFACE FINISH: 63 Ra REMOVE ALL BURRS AND SHARP EDGES: 010 MAX		03/07/08	MNH
THE INFORMATION HEREIN CONTAINS PROPERTY INFORMATION OF SULLINS ELECTRONICS AND IS NOT TO BE REPRODUCED, USED OR DISCLOSED TO OTHERS FOR ANY PURPOSE EXCEPT AS SPECIFICALLY AUTHORIZED IN WRITING BY AN OFFICER OF SULLINS ELECTRONICS.		DESCRIPTION EDGE CARD, .156 CC, LP	
PART NUMBER M DSE S		SIZE C	DWG. NO. C10872
INTERPRET DIMENSIONS AND GEOMETRIC TOLERANCING PER: ANSI Y14.5M-1994		SCALE: 3:1	REV C
			SHEET 1 OF 3



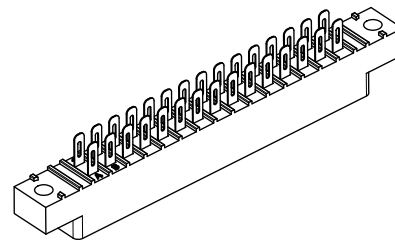
**CUSTOMER COPY**



<b>SULLINS</b> CONNECTOR SOLUTIONS	
DESCRIPTION: EDGE CARD, .156 CC, LP	
PART NUMBER: M_DSE_S	
SIZE: C	DWG. NO.: C10872
SCALE: 3:1	REV: C
SHEET 2 OF 3	

Only applies for  
PPS/PEEK  
insulators with  
threaded inserts  
or floats

PART NUMBER	NO. OF POS.	A ± .008[0.20]		B ± .008[0.20]		C ± .015[0.38]		D ± .010[0.25]		E ± .020[0.51]		E ± .020[0.51]		F ± .005[0.13]	
		IN	MM	IN	MM	IN	MM	IN	MM	IN	MM	IN	MM	IN	MM
__ M02DSEN	2	0.156	3.96	0.476	12.09	0.596	15.14	N' MOUNTING						0.325	8.26
__ M03DSEN	3	0.312	7.92	0.632	16.05	0.752	19.10								
__ M06DSE __	6	0.780	19.81	1.100	27.94	1.220	30.99	1.533	38.94	1.782	45.26	1.882	47.80		
__ M08DSE __	8	1.092	27.74	1.412	35.86	1.532	38.91	1.845	46.86	2.094	53.19	2.194	55.73		
__ M10DSE __	10	1.404	35.66	1.724	43.79	1.844	46.84	2.157	54.79	2.406	61.11	2.506	63.65		
__ M11DSE __	11	1.560	39.62	1.880	47.75	2.000	50.80	2.313	58.75	2.562	65.07	2.662	67.61		
__ M12DSE __	12	1.716	43.59	2.036	51.71	2.156	54.76	2.469	62.71	2.718	69.04	2.818	71.58		
__ M15DSE __	15	2.184	55.47	2.504	63.60	2.624	66.65	2.937	74.60	3.186	80.92	3.286	83.46		
__ M18DSE __	18	2.652	67.36	2.972	75.49	3.092	78.54	3.405	86.49	3.654	92.81	3.754	95.35		
__ M22DSE __	22	3.276	83.21	3.596	91.34	3.716	94.39	4.029	102.34	4.278	108.66	4.378	111.20		
__ M24DSE __	24	3.588	91.14	3.908	99.26	4.028	102.31	4.341	110.26	4.590	116.59	4.690	119.13		
__ M25DSE __	25	3.744	95.10	4.064	103.23	4.184	106.27	4.497	114.22	4.746	120.55	4.846	123.09		
__ M28DSE __	28	4.212	106.98	4.532	115.11	4.652	118.16	4.965	126.11	5.214	132.44	5.314	134.98		
__ M36DSE __	36	5.460	138.68	5.780	146.81	5.900	149.86	6.213	157.81	6.462	164.13	6.562	166.67		
__ M43DSE __	43	6.552	166.42	6.872	174.55	6.992	177.60	7.305	185.55	7.554	191.87	7.654	194.41		
__ M44DSE __	44	6.708	170.38	7.028	178.51	7.148	181.56	7.461	189.51	7.710	195.83	7.810	198.37		



CUSTOMER COPY



RoHS COMPLIANT

<b>SULLINS</b> CONNECTOR SOLUTIONS	
DESCRIPTION: EDGE CARD, .156 CC, LP	
PART NUMBER: M_DSE -S	
SIZE: C	DWG. NO.: C10872
SCALE: 2:1	REV: C
SHEET 3 OF 3	