

PLATING SPECIFICATIONS	
CONTACT	TERMINAL
A .00015" GOLD	.0001" TINLEAD
D .00003" GOLD	.00003" GOLD OVERALL
G .00001" GOLD	.000005" GOLD
M .00003" GOLD	.00001" GOLD OVERALL
N .00005" GOLD	.0001" TINLEAD
O .00003" GOLD	.0001" TINLEAD
P GOLD FLASH	GOLD FLASH
R .00002" GOLD	.0001" TINLEAD
S .00001" GOLD	.00001" GOLD OVERALL
T .0001" TINLEAD	.0001" TINLEAD OVERALL
V .00003" GOLD	.000005" GOLD
W GOLD FLASH	.0001" TINLEAD
X .00003" GOLD	.0001" TINLEAD
Y .00003" GOLD	.000005" GOLD
Z .00001" GOLD	.0001" TINLEAD

ITEM NO.	QTY.	DESCRIPTION	DRAWING # REF
1	1	B30HD-A350	10028
2	60	E_B-DHH	10011

	A	B	C	D	E	POSITIONS
R_B05DHRD	0.200	0.300	0.490	0.776	1.090	5
R_B06DHRD	0.250	0.350	0.540	0.826	1.140	6
R_B09DHRD	0.400	0.500	0.690	0.976	1.290	9
R_B10DHRD	0.450	0.550	0.740	1.026	1.340	10
R_B13DHRD	0.600	0.700	0.890	1.176	1.490	13
R_14DHRD	0.650	0.750	0.940	1.226	1.540	14
R_B15DHRD	0.700	0.800	0.990	1.276	1.590	15
R_B20DHRD	0.950	1.050	1.240	1.526	1.840	20
R_B22DHRD	1.050	1.150	1.340	1.626	1.940	22
R_B25DHRD	1.200	1.300	1.490	1.776	2.090	25
R_B30DHRD	1.450	1.550	1.740	2.026	2.340	30
R_B34DHRD	1.650	1.750	1.940	2.226	2.540	34
R_B35DHRD	1.700	1.800	1.990	2.276	2.590	35
R_B40DHRD	1.950	2.050	2.240	2.526	2.840	40
R_B45DHRD	2.200	2.300	2.490	2.776	3.090	45
R_B50DHRD	2.450	2.550	2.740	3.026	3.340	50
R_B55DHRD	2.700	2.800	2.990	3.276	3.590	55
R_B60DHRD	2.950	3.050	3.240	3.526	3.840	60
R_B64DHRD	3.150	3.250	3.440	3.726	4.040	64
R_B65DHRD	3.200	3.300	3.490	3.776	4.090	65
R_B66DHRD	3.250	3.350	3.540	3.826	4.140	66
R_B70DHRD	3.450	3.550	3.740	4.026	4.340	70
R_B75DHRD	3.700	3.800	3.990	4.276	4.590	75
R_B80DHRD	3.950	4.050	4.240	4.526	4.840	80
R_B85DHRD	4.200	4.300	4.490	4.776	5.090	85
R_B90DHRD	4.450	4.550	4.740	5.026	5.340	90
R_B95DHRD	4.700	4.800	4.990	5.276	5.590	95
R_B100DHRD	4.950	5.050	5.240	5.526	5.840	100
R_B105DHRD	5.200	5.300	5.490	5.776	6.090	105
R_B108DHRD	5.350	5.450	5.640	5.926	6.240	108
R_B110DHRD	5.450	5.550	5.740	6.026	6.340	110
R_B120DHRD	5.950	6.050	6.240	6.526	6.840	120

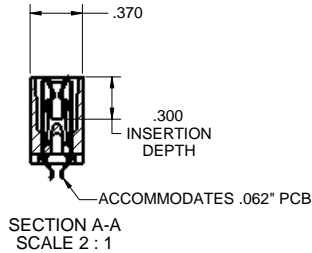
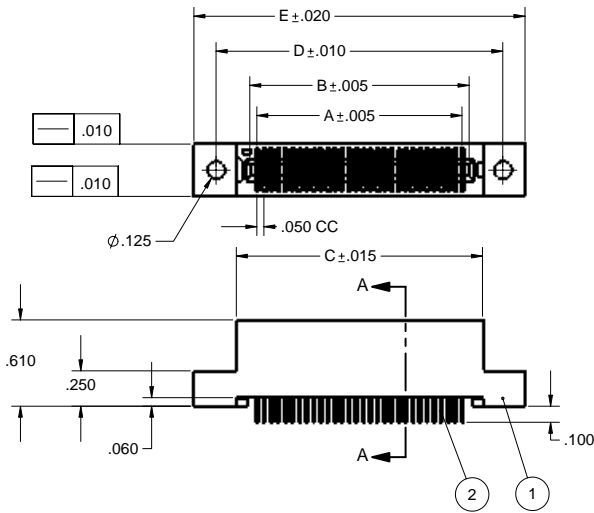
SAMPLE PART NUMBER

RZB30DHRD

PLATING  
(SEE TABLE)

MOUNTING STYLE  
(SEE PAGE #2)

TERMINATION TYPE  
(SEE PAGE #2)



\*\*30 POSITION BODY USED AS EXAMPLE ONLY.\*\*

NOTES:

- THIS SPECIFICATION COVERS THE REQUIREMENT FOR DUAL EDGECARD CONNECTORS.
- INSULATOR MATERIAL: POLYPHENYLENE SULFIDE.
- CONTACT MATERIAL: PHOSPHOR BRONZE.
- PLATING: SEE PLATING SPEC. TABLE AND SAMPLE PART NUMBER
- TEMPERATURE: -65°C TO 125°C
- UL FLAMMABILITY RATING: 94V-0
- VOLTAGE RATING: 125 VDC MINIMUM AT SEA LEVEL.
- CURRENT RATING: 1 AMP
- VOLTAGE DROP: 30 MILLI VOLT AT RATED CURRENT
- INSULATION RESISTANCE: 1000 MEGA OHM
- CONNECTOR IDENTIFICATION: THE PART SHALL BE MARKED WITH A PART NUMBER AND DATE CODE.
- BOARD THICKNESS ACCOMMODATED: .054/.070
- BOARD INSERTION FORCE: 6 OUNCE AVERAGE PER CONTACT PAIR USING .062 PCB
- BOARD WITHDRAWAL FORCE: 1 OUNCE MINIMUM PER CONTACT PAIR USING .062 PCB
- TOLERANCE: ±.010" UNLESS OTHERWISE NOTED.

COMPUTER GENERATED DOCUMENT DO NOT CHANGE MANUALLY

PROPRIETARY AND CONFIDENTIAL  
THIS DRAWING AND DESIGN IS THE PROPERTY OF SULLINS ELECTRONICS. IT MAY NOT BE USED FOR ANY PURPOSE OTHER THAN BY THE OWNER. SULLINS ELECTRONICS DOES NOT AUTHORIZE THE REPRODUCTION OR CONVEYANCE OF ANY INFORMATION CONTAINED HEREIN.

REV.	ECO NO.	DESCRIPTION	DATE	NAME	DATE	BY	APPVD
	80	ORIGINAL RELEASE	10/21/03	JFW			AJT
		UNLESS OTHERWISE SPECIFIED: DIMENSIONS ARE IN INCHES TOLERANCES: FRACTIONS & .100 ANGULAR & .100 HOLE PLACE DECIMAL & .005 TWO PLACE DECIMAL & .0005					
		MAXIMUM	NOTED				
		FINISH	N/A				
		APPLICATION	DO NOT SCALE DRAWING				

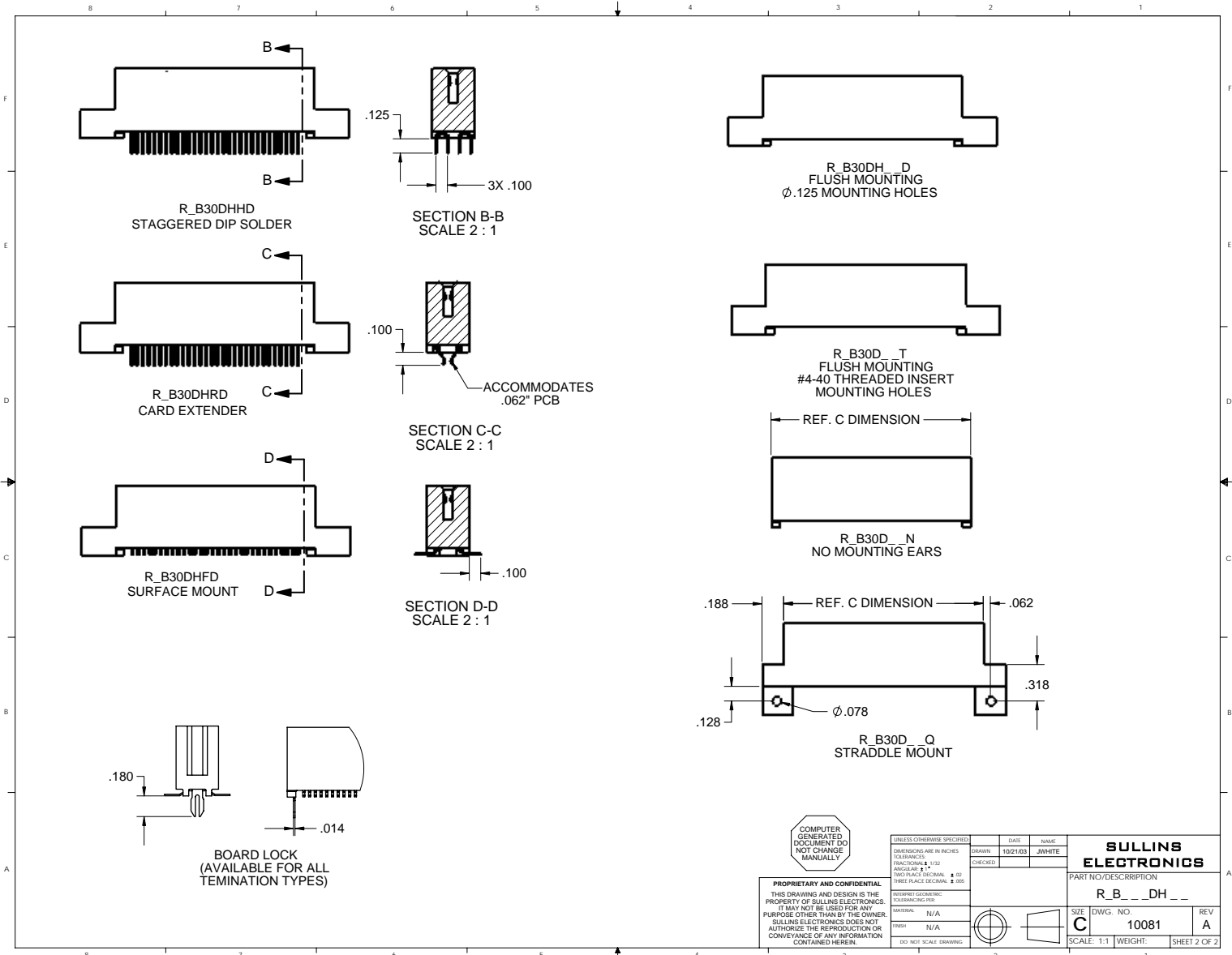
DRAWN 10/21/03		DATE		NAME	
CHECKED 10/21/03		DATE		NAME	
COMMENTS:					
PART NO. DESCRIPTION					
HH, HF, HR TERMINATIONS					
R_B_DH					
SIZE	DWG. NO.	REV			
C	10081	A			
SCALE: 1:1 SHEET 1 OF 2					

**SULLINS ELECTRONICS**

HH, HF, HR TERMINATIONS  
R\_B\_DH

SIZE C DWG. NO. 10081 REV A

SCALE: 1:1 SHEET 1 OF 2



COMPUTER  
GENERATED  
DOCUMENT DO  
NOT CHANGE  
MANUALLY

PROPRIETARY AND CONFIDENTIAL  
THIS DRAWING AND DESIGN IS THE  
PROPERTY OF SULLINS ELECTRONICS.  
IT MAY NOT BE USED FOR ANY  
PURPOSE OTHER THAN BY THE OWNER.  
SULLINS ELECTRONICS DOES NOT  
AUTHORIZE THE REPRODUCTION OR  
CONVEYANCE OF ANY INFORMATION  
CONTAINED HEREIN.

UNLESS OTHERWISE SPECIFIED:		DATE	NAME
DIMENSIONS ARE IN INCHES TOLERANCES	DRAWN	10/21/03	JWHITE
FRACTIONS & 1/32	CHECKED		
ANGLES DECIMAL & 10			
NO PLACE DECIMAL & 05			
THREE PLACE DECIMAL & 005			
INTERPRET GEOMETRIC TOLERANCING PER:			
MAXIMA	N/A		
PROFIT	N/A		
DO NOT SCALE DRAWING			

<b>SULLINS ELECTRONICS</b>		
PART NO./DESCRIPTION		
R_B__DH__		
SIZE	DWG. NO.	REV
C	10081	A
SCALE: 1:1	WEIGHT:	SHEET 2 OF 2