

Surface Mount Type

Series: **S** Type: **V**



■ Features

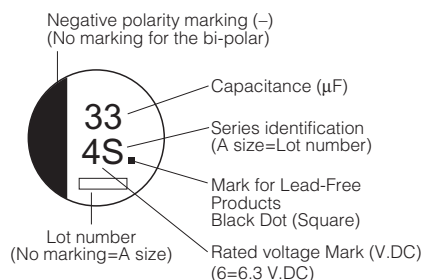
- Endurance: 85 °C 2000 h
- Vibration-proof product is available upon request. ($\phi 8 \leq$)
- RoHS directive compliant

■ Specifications

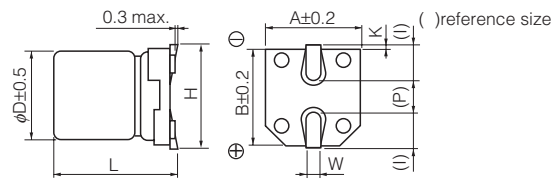
| | | | | | | | | | | | |
|------------------------------------|---------------------------------------------------------------------------------------------------------------------------------------------------------------------------------------------------|--------------------------------------|-----------------------|----|-----------------------|----|----|----|----|-----|-----------------------------|
| Category Temp. Range | -40 °C to +85 °C | | | | | | | | | | |
| Rated W.V. Range | 4 V.DC to 100 V.DC | | | | | | | | | | |
| Nominal Cap. Range | 0.1 μ F to 1500 μ F | | | | | | | | | | |
| Capacitance Tolerance | $\pm 20\%$ (120 Hz/+20 °C) | | | | | | | | | | |
| DC Leakage Current | $I \leq 0.01 CV$ or 3 (μ A) (Bi-Polar $I \leq 0.02 CV$ or 6 (μ A) After 2 minutes (Whichever is greater) | | | | | | | | | | |
| tan δ | Please see the attached standard products list | | | | | | | | | | |
| Characteristics at Low Temperature | W.V. (V) | 4 | 6.3 | 10 | 16 | 25 | 35 | 50 | 63 | 100 | (Impedance ratio at 120 Hz) |
| | Z(-25 °C)/Z(+20 °C) | 7 | 4 | 3 | 2 | 2 | 2 | 2 | 3 | 3 | |
| | Z(-40 °C)/Z(+20 °C) | 15 | 8 | 6 | 4 | 4 | 3 | 3 | 4 | 4 | |
| Endurance | After applying rated working voltage for 2000 hours (Bi-polar:1000 hours for each polarity) at +85 °C ± 2 °C and then being stabilized at +20 °C, Capacitors shall meet the following limits. | | | | | | | | | | |
| | Capacitance change | $\pm 20\%$ of inisial measured value | | | | | | | | | |
| | | Size code | Rated W.V. | | Cap. change | | | | | | |
| | | A($\phi 3$) | 4 W.V to 50 W.V | | 1000 hours $\pm 30\%$ | | | | | | |
| | | B($\phi 4$) to D, D8($\phi 6.3$) | 4 W.V | | | | | | | | |
| $\leq D(\phi 6.3)$ Miniature | 6.3 W.V | | 1000 hours $\pm 20\%$ | | | | | | | | |
| | ≥ 10 W.V | | | | | | | | | | |
| tan δ | $\leq 200\%$ initial specified value | | | | | | | | | | |
| DC leakage current | \leq initial specified value | | | | | | | | | | |
| Shelf Life | After storage for 1000 hours at +85 °C ± 2 °C with no voltage applied and then being stabilized at +20 °C, capacitors shall meet the limits specified in Endurance. (With voltage treatment) | | | | | | | | | | |
| | | | | | | | | | | | |
| Resistance to Soldering Heat | After reflow soldering and then being stabilized at +20 °C, capacitors shall meet the following limits. | | | | | | | | | | |
| | Capacitance change | $\pm 10\%$ of initial measured value | | | | | | | | | |
| | tan δ | \leq initial specified value | | | | | | | | | |
| | DC leakage current | \leq initial specified value | | | | | | | | | |

■ Marking

Example: 4V 33 μ F (Polarized)
Marking color: BLACK



■ Dimensions in mm (not to scale)



| Size code | D | L | A, B | H | I | W | P | K |
|-----------|------|----------------------|------|-----------|-----|----------------|-----|-------------------------|
| A | 3.0 | 5.4 $^{+0.1}_{-0.2}$ | 3.3 | 4.5 max. | 1.5 | 0.55 ± 0.1 | 0.6 | 0.35 $^{+0.15}_{-0.20}$ |
| B | 4.0 | 5.4 $^{+0.1}_{-0.2}$ | 4.3 | 5.5 max. | 1.8 | 0.65 ± 0.1 | 1.0 | 0.35 $^{+0.15}_{-0.20}$ |
| C | 5.0 | 5.4 $^{+0.1}_{-0.2}$ | 5.3 | 6.5 max. | 2.2 | 0.65 ± 0.1 | 1.5 | 0.35 $^{+0.15}_{-0.20}$ |
| D | 6.3 | 5.4 $^{+0.1}_{-0.2}$ | 6.6 | 7.8 max. | 2.6 | 0.65 ± 0.1 | 1.8 | 0.35 $^{+0.15}_{-0.20}$ |
| D8 | 6.3 | 7.7 ± 0.3 | 6.6 | 7.8 max. | 2.6 | 0.65 ± 0.1 | 1.8 | 0.35 $^{+0.15}_{-0.20}$ |
| E | 8.0 | 6.2 ± 0.3 | 8.3 | 9.5 max. | 3.4 | 0.65 ± 0.1 | 2.2 | 0.35 $^{+0.15}_{-0.20}$ |
| F | 8.0 | 10.2 ± 0.3 | 8.3 | 10.0 max. | 3.4 | 0.90 ± 0.2 | 3.1 | 0.70 ± 0.20 |
| G | 10.0 | 10.2 ± 0.3 | 10.3 | 12.0 max. | 3.5 | 0.90 ± 0.2 | 4.6 | 0.70 ± 0.20 |

Design and specifications are each subject to change without notice. Ask factory for the current technical specifications before purchase and/or use. Should a safety concern arise regarding this product, please be sure to contact us immediately.

00 Sep. 2010

■ Standard Products

| W.V. | Cap. (±20 %) | Case size | | | Specification | | | Part No. (RoHS:compliant) | Reflow | Min. Packaging Q'ty |
|------|-----------------|-----------|--------|---------------|----------------------------------------------------------|-------------------------------|-------------|------------------------------|--------|------------------------|
| | | Dia. | Length | *Size Code | Ripple Current (120 Hz) (+85 °C) (mA r.m.s.) | tan δ (120 Hz) (+20 °C) | Endurance | | | Taping |
| (V) | (μF) | (mm) | (mm) | | | (hours) | | | (pcs) | |
| 4 | 22 | 3 | 5.4 | A | 19 | 0.37 | 1000 | EEE0GS220SR | (1) | 2000 |
| | 33 | 4 | 5.4 | B | 26 | 0.35 | 1000 | EEE0GA330SR | (1) | 2000 |
| | 47 | 4 | 5.4 | B | 34 | 0.35 | 1000 | EEE0GA470SR | (1) | 2000 |
| | 100 | 5 | 5.4 | C | 61 | 0.35 | 1000 | EEE0GA101SR | (1) | 1000 |
| | 220 | 6.3 | 5.4 | D | 82 | 0.35 | 1000 | EEE0GA221SP | (1) | 1000 |
| | 330 | 6.3 | 5.4 | (D) | 80 | 0.50 | 1000 | EEE0GA331WP | (1) | 1000 |
| | 470 | 6.3 | 7.7 | D8 | 200 | 0.35 | 1000 | EEE0GA471XP | (1) | 900 |
| 6.3 | 22 | 3 | 5.4 | (A) | 20 | 0.35 | 1000 | EEE0JS220WR | (1) | 2000 |
| | | 4 | 5.4 | B | 29 | 0.26 | 2000 | EEE0JA220SR | (1) | 2000 |
| | 33 | 4 | 5.4 | (B) | 22 | 0.35 | 1000 | EEE0JA330WR | (1) | 2000 |
| | | 4 | 5.4 | (B) | 36 | 0.35 | 1000 | EEE0JA470WR | (1) | 2000 |
| | 47 | 5 | 5.4 | C | 46 | 0.26 | 2000 | EEE0JA470SR | (1) | 1000 |
| | | 5 | 5.4 | (C) | 47 | 0.35 | 1000 | EEE0JA101WR | (1) | 1000 |
| | 100 | 6.3 | 5.4 | D | 71 | 0.26 | 2000 | EEE0JA101SP | (1) | 1000 |
| | | 6.3 | 5.4 | (D) | 74 | 0.35 | 1000 | EEE0JA221WP | (1) | 1000 |
| | 330 | 6.3 | 7.7 | D8 | 188 | 0.26 | 2000 | EEE0JA331XP | (1) | 900 |
| | | 8 | 6.2 | E | 300 | 0.35 | 2000 | EEE0JA331P | (2) | 1000 |
| | 470 | 8 | 10.2 | F | 380 | 0.35 | 2000 | EEE0JA471P | (2) | 500 |
| 1000 | 8 | 10.2 | (F) | 500 | 0.35 | 2000 | EEE0JA102UP | (2) | 500 | |
| | 10 | 10.2 | G | 700 | 0.35 | 2000 | EEE0JA102P | (2) | 500 | |
| 1500 | 10 | 10.2 | G | 750 | 0.35 | 2000 | EEE0JA152P | (2) | 500 | |
| 10 | 22 | 4 | 5.4 | (B) | 28 | 0.30 | 1000 | EEE1AA220WR | (1) | 2000 |
| | 33 | 4 | 5.4 | (B) | 29 | 0.30 | 1000 | EEE1AA330WR | (1) | 2000 |
| | | 5 | 5.4 | C | 43 | 0.20 | 2000 | EEE1AA330SR | (1) | 1000 |
| | 47 | 5 | 5.4 | (C) | 43 | 0.30 | 1000 | EEE1AA470WR | (1) | 1000 |
| | | 5 | 5.4 | (C) | 50 | 0.30 | 1000 | EEE1AA101WR | (1) | 1000 |
| | 100 | 6.3 | 5.4 | D | 70 | 0.26 | 2000 | EEE1AA101SP | (1) | 1000 |
| | | 6.3 | 7.7 | D8 | 173 | 0.20 | 2000 | EEE1AA221XP | (1) | 900 |
| | 220 | 8 | 6.2 | E | 250 | 0.26 | 2000 | EEE1AA221P | (2) | 1000 |
| | | 8 | 10.2 | F | 390 | 0.26 | 2000 | EEE1AA331P | (2) | 500 |
| | 470 | 8 | 10.2 | (F) | 390 | 0.26 | 2000 | EEE1AA471UP | (2) | 500 |
| | | 10 | 10.2 | G | 400 | 0.26 | 2000 | EEE1AA471P | (2) | 500 |
| 1000 | 10 | 10.2 | G | 580 | 0.26 | 2000 | EEE1AA102P | (2) | 500 | |
| 16 | 10 | 3 | 5.4 | A | 20 | 0.18 | 1000 | EEE1CS100SR | (1) | 2000 |
| | | 4 | 5.4 | B | 28 | 0.16 | 2000 | EEE1CA100SR | (1) | 2000 |
| | 22 | 4 | 5.4 | (B) | 28 | 0.26 | 1000 | EEE1CA220WR | (1) | 2000 |
| | | 5 | 5.4 | C | 39 | 0.16 | 2000 | EEE1CA220SR | (1) | 1000 |
| | 33 | 5 | 5.4 | (C) | 35 | 0.26 | 1000 | EEE1CA330WR | (1) | 1000 |
| | | 5 | 5.4 | (C) | 39 | 0.26 | 1000 | EEE1CA470WR | (1) | 1000 |
| | 47 | 6.3 | 5.4 | D | 70 | 0.16 | 2000 | EEE1CA470SP | (1) | 1000 |
| | | 6.3 | 5.4 | (D) | 70 | 0.26 | 1000 | EEE1CA101WP | (1) | 1000 |
| | 100 | 8 | 6.2 | E | 200 | 0.20 | 2000 | EEE1CA101P | (2) | 1000 |
| | | 6.3 | 7.7 | D8 | 162 | 0.16 | 2000 | EEE1CA221XP | (1) | 900 |
| | 220 | 8 | 10.2 | F | 280 | 0.20 | 2000 | EEE1CA221P | (2) | 500 |
| | | 8 | 10.2 | (F) | 320 | 0.20 | 2000 | EEE1CA331UP | (2) | 500 |
| | 330 | 10 | 10.2 | G | 380 | 0.20 | 2000 | EEE1CA331P | (2) | 500 |
| | | 8 | 10.2 | (F) | 350 | 0.20 | 2000 | EEE1CA471UP | (2) | 500 |
| | 470 | 10 | 10.2 | G | 420 | 0.20 | 2000 | EEE1CA471P | (2) | 500 |

* Size code():Miniaturization product

The taping dimensions are explained on EE188 of our Catalog. Please use it as a reference guide.

Reflow Profile(Fig-1 to Fig-11) listed on EE186 of our Catalog.

Design and specifications are each subject to change without notice. Ask factory for the current technical specifications before purchase and/or use.
Should a safety concern arise regarding this product, please be sure to contact us immediately.

■ Standard Products

| W.V. (V) | Cap. (±20 %) (μF) | Case size | | | Specification | | | Part No. (RoHS:compliant) | Reflow | Min. Packaging Q'ty |
|-------------|-------------------------|--------------|----------------|---------------|----------------------------------------------------------|-------------------------------|----------------------|------------------------------|--------|------------------------|
| | | Dia. (mm) | Length (mm) | *Size Code | Ripple Current (120 Hz) (+85 °C) (mA r.m.s.) | tan δ (120 Hz) (+20 °C) | Endurance (hours) | | | Taping (pcs) |
| 25 | 4.7 | 3 | 5.4 | A | 12 | 0.16 | 1000 | EEE1ES4R7SR | (1) | 2000 |
| | | 4 | 5.4 | B | 22 | 0.14 | 2000 | EEE1EA4R7SR | (1) | 2000 |
| | 10 | 4 | 5.4 | (B) | 22 | 0.20 | 1000 | EEE1EA100WR | (1) | 2000 |
| | | 5 | 5.4 | C | 28 | 0.14 | 2000 | EEE1EA100SR | (1) | 1000 |
| | 22 | 5 | 5.4 | (C) | 35 | 0.20 | 1000 | EEE1EA220WR | (1) | 1000 |
| | | 6.3 | 5.4 | D | 55 | 0.14 | 2000 | EEE1EA220SP | (1) | 1000 |
| | 33 | 5 | 5.4 | (C) | 42 | 0.20 | 1000 | EEE1EA330WR | (1) | 1000 |
| | | 6.3 | 5.4 | D | 65 | 0.14 | 2000 | EEE1EA330SP | (1) | 1000 |
| | 47 | 6.3 | 5.4 | (D) | 70 | 0.20 | 1000 | EEE1EA470WP | (1) | 1000 |
| | 100 | 6.3 | 7.7 | D8 | 143 | 0.14 | 2000 | EEE1EA101XP | (1) | 900 |
| | | 8 | 6.2 | (E) | 91 | 0.16 | 2000 | EEE1EA101UP | (2) | 1000 |
| | | 8 | 10.2 | F | 180 | 0.16 | 2000 | EEE1EA101P | (2) | 500 |
| | 220 | 8 | 10.2 | (F) | 230 | 0.16 | 2000 | EEE1EA221UP | (2) | 500 |
| | | 10.0 | 10.2 | G | 310 | 0.16 | 2000 | EEE1EA221P | (2) | 500 |
| 330 | 8 | 10.2 | (F) | 270 | 0.16 | 2000 | EEE1EA331UP | (2) | 500 | |
| | 10 | 10.2 | G | 340 | 0.16 | 2000 | EEE1EA331P | (2) | 500 | |
| 470 | 10 | 10.2 | G | 380 | 0.16 | 2000 | EEE1EA471P | (2) | 500 | |
| 35 | 2.2 | 3 | 5.4 | A | 8 | 0.14 | 1000 | EEE1VS2R2SR | (1) | 2000 |
| | 3.3 | 3 | 5.4 | A | 10 | 0.14 | 1000 | EEE1VS3R3SR | (1) | 2000 |
| | 4.7 | 4 | 5.4 | B | 22 | 0.12 | 2000 | EEE1VA4R7SR | (1) | 2000 |
| | 10 | 4 | 5.4 | (B) | 22 | 0.16 | 1000 | EEE1VA100WR | (1) | 2000 |
| | | 5 | 5.4 | C | 30 | 0.12 | 2000 | EEE1VA100SR | (1) | 1000 |
| | 22 | 5 | 5.4 | (C) | 36 | 0.16 | 1000 | EEE1VA220WR | (1) | 1000 |
| | | 6.3 | 5.4 | D | 60 | 0.12 | 2000 | EEE1VA220SP | (1) | 1000 |
| | 33 | 6.3 | 5.4 | (D) | 60 | 0.16 | 1000 | EEE1VA330WP | (1) | 1000 |
| | | 8 | 6.2 | E | 130 | 0.14 | 2000 | EEE1VA330P | (2) | 1000 |
| | 47 | 6.3 | 5.4 | (D) | 70 | 0.16 | 1000 | EEE1VA470WP | (1) | 1000 |
| | | 8 | 6.2 | E | 165 | 0.14 | 2000 | EEE1VA470P | (2) | 1000 |
| | 100 | 6.3 | 7.7 | D8 | 132 | 0.12 | 2000 | EEE1VA101XP | (1) | 900 |
| | | 8 | 10.2 | (F) | 140 | 0.14 | 2000 | EEE1VA101UP | (2) | 500 |
| | | 10 | 10.2 | G | 210 | 0.14 | 2000 | EEE1VA101P | (2) | 500 |
| 220 | 8 | 10.2 | (F) | 200 | 0.14 | 2000 | EEE1VA221UP | (2) | 500 | |
| | 10 | 10.2 | G | 310 | 0.14 | 2000 | EEE1VA221P | (2) | 500 | |
| 330 | 10 | 10.2 | G | 350 | 0.14 | 2000 | EEE1VA331P | (2) | 500 | |

* Size code (): Miniaturization product

The taping dimensions are explained on EE188 of our Catalog. Please use it as a reference guide.

Reflow Profile(Fig-1 to Fig-11) listed on EE186 of our Catalog.

■ Standard Products

| W.V. (V) | Cap. (±20 %) (μF) | Case size | | | Specification | | | Part No. (RoHS:compliant) | Reflow | Min. Packaging Q'ty |
|-------------|-------------------------|--------------|----------------|---------------|----------------------------------------------------------|-------------------------------|----------------------|------------------------------|--------|------------------------|
| | | Dia. (mm) | Length (mm) | *Size Code | Ripple Current (120 Hz) (+85 °C) (mA r.m.s.) | tan δ (120 Hz) (+20 °C) | Endurance (hours) | | | Taping (pcs) |
| 50 | 0.1 | 3 | 5.4 | A | 1 | 0.14 | 1000 | EEE1HS0R1SR | (1) | 2000 |
| | | 4 | 5.4 | B | 1 | 0.12 | 2000 | EEE1HA0R1SR | (1) | 2000 |
| | 0.22 | 3 | 5.4 | A | 2 | 0.14 | 1000 | EEE1HSR22SR | (1) | 2000 |
| | | 4 | 5.4 | B | 2 | 0.12 | 2000 | EEE1HAR22SR | (1) | 2000 |
| | 0.33 | 3 | 5.4 | A | 3 | 0.14 | 1000 | EEE1HSR33SR | (1) | 2000 |
| | | 4 | 5.4 | B | 3 | 0.12 | 2000 | EEE1HAR33SR | (1) | 2000 |
| | 0.47 | 3 | 5.4 | A | 5 | 0.14 | 1000 | EEE1HSR47SR | (1) | 2000 |
| | | 4 | 5.4 | B | 5 | 0.12 | 2000 | EEE1HAR47SR | (1) | 2000 |
| | 1 | 3 | 5.4 | A | 8 | 0.14 | 1000 | EEE1HS010SR | (1) | 2000 |
| | | 4 | 5.4 | B | 10 | 0.12 | 2000 | EEE1HA010SR | (1) | 2000 |
| | 2.2 | 3 | 5.4 | A | 8 | 0.14 | 1000 | EEE1HS2R2SR | (1) | 2000 |
| | | 4 | 5.4 | B | 16 | 0.12 | 2000 | EEE1HA2R2SR | (1) | 2000 |
| | 3.3 | 4 | 5.4 | B | 16 | 0.12 | 2000 | EEE1HA3R3SR | (1) | 2000 |
| | 4.7 | 4 | 5.4 | (B) | 18 | 0.14 | 1000 | EEE1HA4R7WR | (1) | 2000 |
| | | 5 | 5.4 | C | 23 | 0.12 | 2000 | EEE1HA4R7SR | (1) | 1000 |
| | 10 | 5 | 5.4 | (C) | 27 | 0.14 | 1000 | EEE1HA100WR | (1) | 1000 |
| | | 6.3 | 5.4 | D | 35 | 0.12 | 2000 | EEE1HA100SP | (1) | 1000 |
| | 22 | 6.3 | 5.4 | (D) | 40 | 0.14 | 1000 | EEE1HA220WP | (1) | 1000 |
| | | 8 | 6.2 | E | 120 | 0.12 | 2000 | EEE1HA220P | (2) | 1000 |
| | 33 | 6.3 | 7.7 | D8 | 85 | 0.12 | 2000 | EEE1HA330XP | (1) | 900 |
| | | 8 | 6.2 | (E) | 65 | 0.12 | 2000 | EEE1HA330UP | (2) | 1000 |
| | | 8 | 10.2 | F | 110 | 0.12 | 2000 | EEE1HA330P | (2) | 500 |
| | 47 | 6.3 | 7.7 | D8 | 105 | 0.12 | 2000 | EEE1HA470XP | (1) | 900 |
| | | 8 | 10.2 | (F) | 110 | 0.12 | 2000 | EEE1HA470UP | (2) | 500 |
| 10 | | 10.2 | G | 130 | 0.12 | 2000 | EEE1HA470P | (2) | 500 | |
| 100 | 8 | 10.2 | (F) | 200 | 0.12 | 2000 | EEE1HA101UP | (2) | 500 | |
| | 10 | 10.2 | G | 250 | 0.12 | 2000 | EEE1HA101P | (2) | 500 | |
| 220 | 10 | 10.2 | G | 300 | 0.12 | 2000 | EEE1HA221P | (2) | 500 | |
| 63 | 22 | 8 | 6.2 | (E) | 40 | 0.18 | 2000 | EEE1JA220UP | (2) | 1000 |
| | | 8 | 10.2 | F | 40 | 0.18 | 2000 | EEE1JA220P | (2) | 500 |
| | 33 | 8 | 10.2 | F | 45 | 0.18 | 2000 | EEE1JA330P | (2) | 500 |
| | 47 | 8 | 10.2 | (F) | 45 | 0.18 | 2000 | EEE1JA470UP | (2) | 500 |
| | | 10 | 10.2 | G | 45 | 0.18 | 2000 | EEE1JA470P | (2) | 500 |
| 100 | 10 | 10.2 | G | 60 | 0.18 | 2000 | EEE1JA101P | (2) | 500 | |
| 100 | 3.3 | 8 | 6.2 | E | 50 | 0.18 | 2000 | EEE2AA3R3P | (2) | 1000 |
| | 4.7 | 8 | 6.2 | (E) | 50 | 0.18 | 2000 | EEE2AA4R7UP | (2) | 1000 |
| | | 8 | 10.2 | F | 80 | 0.18 | 2000 | EEE2AA4R7P | (2) | 500 |
| | 10 | 8 | 6.2 | (E) | 50 | 0.18 | 2000 | EEE2AA100UP | (2) | 1000 |
| | | 8 | 10.2 | F | 85 | 0.18 | 2000 | EEE2AA100P | (2) | 500 |
| | 22 | 8 | 10.2 | (F) | 55 | 0.18 | 2000 | EEE2AA220UP | (2) | 500 |
| | | 10 | 10.2 | G | 85 | 0.18 | 2000 | EEE2AA220P | (2) | 500 |
| | 33 | 10 | 10.2 | G | 90 | 0.18 | 2000 | EEE2AA330P | (2) | 500 |

* Size code():Miniaturization product
 The taping dimensions are explained on EE188 of our Catalog. Please use it as a reference guide.
 Reflow Profile(Fig-1 to Fig-11) listed on EE186 of our Catalog.

■ Standard Products (Bi-polar)

| W.V. | Cap. (±20 %) | Case size | | | Specification | | | Part No. (RoHS:compliant) | Reflow | Min. Packaging Q'ty |
|------|-----------------|-----------|--------|--------------|----------------------------------------------------------|--------------------------------------|----------------------|------------------------------|--------|------------------------|
| | | Dia. | Length | Size Code | Ripple Current (120 Hz) (+85 °C) (mA r.m.s.) | tan δ (120 Hz) (+20 °C) | Endurance (hours) | | | Taping (pcs) |
| (V) | (μ F) | (mm) | (mm) | | | | | | | |
| 6.3 | 22 | 5 | 5.4 | C | 29 | 0.52 | 2000 | EEE0JA220NR | (1) | 1000 |
| | 47 | 6.3 | 5.4 | D | 46 | 0.52 | 2000 | EEE0JA470NP | (1) | 1000 |
| 10 | 10 | 4 | 5.4 | B | 25 | 0.40 | 2000 | EEE1AA100NR | (1) | 2000 |
| | 33 | 6.3 | 5.4 | D | 43 | 0.40 | 2000 | EEE1AA330NP | (1) | 1000 |
| 16 | 4.7 | 4 | 5.4 | B | 20 | 0.32 | 2000 | EEE1CA4R7NR | (1) | 2000 |
| | 10 | 5 | 5.4 | C | 25 | 0.32 | 2000 | EEE1CA100NR | (1) | 1000 |
| | 22 | 6.3 | 5.4 | D | 39 | 0.32 | 2000 | EEE1CA220NP | (1) | 1000 |
| 25 | 3.3 | 4 | 5.4 | B | 12 | 0.28 | 2000 | EEE1EA3R3NR | (1) | 2000 |
| | 4.7 | 5 | 5.4 | C | 21 | 0.28 | 2000 | EEE1EA4R7NR | (1) | 1000 |
| | 10 | 6.3 | 5.4 | D | 28 | 0.28 | 2000 | EEE1EA100NP | (1) | 1000 |
| 35 | 2.2 | 4 | 5.4 | B | 12 | 0.24 | 2000 | EEE1VA2R2NR | (1) | 2000 |
| | 4.7 | 5 | 5.4 | C | 22 | 0.24 | 2000 | EEE1VA4R7NR | (1) | 1000 |
| | 10 | 6.3 | 5.4 | D | 30 | 0.24 | 2000 | EEE1VA100NP | (1) | 1000 |
| 50 | 0.22 | 4 | 5.4 | B | 2 | 0.24 | 2000 | EEE1HAR22NR | (1) | 2000 |
| | 0.33 | 4 | 5.4 | B | 3 | 0.24 | 2000 | EEE1HAR33NR | (1) | 2000 |
| | 0.47 | 4 | 5.4 | B | 5 | 0.24 | 2000 | EEE1HAR47NR | (1) | 2000 |
| | 1 | 4 | 5.4 | B | 10 | 0.24 | 2000 | EEE1HA010NR | (1) | 2000 |
| | 2.2 | 5 | 5.4 | C | 16 | 0.24 | 2000 | EEE1HA2R2NR | (1) | 1000 |
| | 3.3 | 5 | 5.4 | C | 21 | 0.24 | 2000 | EEENZ1H3R3R | (1) | 1000 |
| | 4.7 | 6.3 | 5.4 | D | 31 | 0.24 | 2000 | EEE1HA4R7NP | (1) | 1000 |

The taping dimensions are explained on EE188 of our Catalog. Please use it as a reference guide.
Reflow Profile(Fig-1 to Fig-11) listed on EE186 of our Catalog.