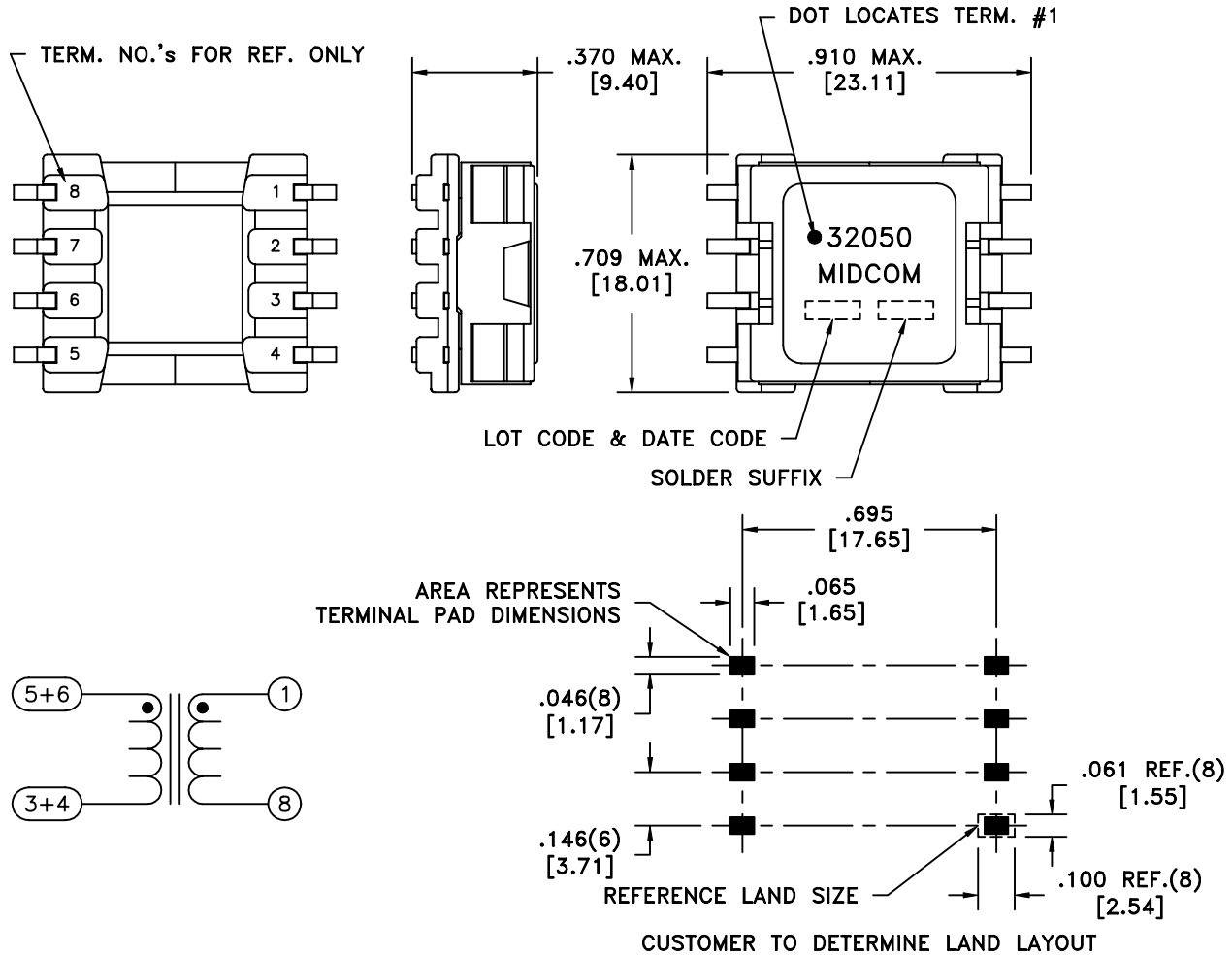


SOLDER SUFFIX	CUSTOMER TERMINAL	RoHS	LEAD(Pb)-FREE
	Sn100%	No	No
LF3	Sn100%	Yes	Yes



ELECTRICAL SPECIFICATIONS @ 25°C unless otherwise noted:

- D.C. RESISTANCE (@20°C): 4-5(tie 3+4, 5+6), 0.02 ohms max.
1-8, 1.45 ohms max.
- DIELECTRIC RATING: 1000VDC, 1 minute tested by applying 1250VDC for 1 second between 1-5(tie 3+4).
- INDUCTANCE: 10.0uH ±10%, 10kHz, 100mVAC, 4-5(tie 3+4, 5+6), Ls.
- LEAKAGE INDUCTANCE: 0.15uH max., 100kHz, 10mAAC, 4-5(tie 1+8, 3+4, 5+6), Ls.
- URNS RATIO: (1-8):(5-4) = 10:1, tie(3+4, 5+6), ±2%.

Midcom, Inc.
Watertown, SD USA
Toll Free: 800-643-2661
Fax: 605-886-4486

This drawing is dual dimensioned.
Dimensions in brackets are in millimeters.

Unless otherwise specified:
Tolerances: Fractions: ±1/64
Angles: ±1° Decimals: ±.005[.13]

DRAWING TITLE

TRANSFORMER

REVISIONS: SEE SHEET 1

Midcom

DRAWING NO.

32050R/-LF3

SCALE ---

REV.

6A
5/05

SHEET 2 OF 5

DWG # 32050R/-LF3