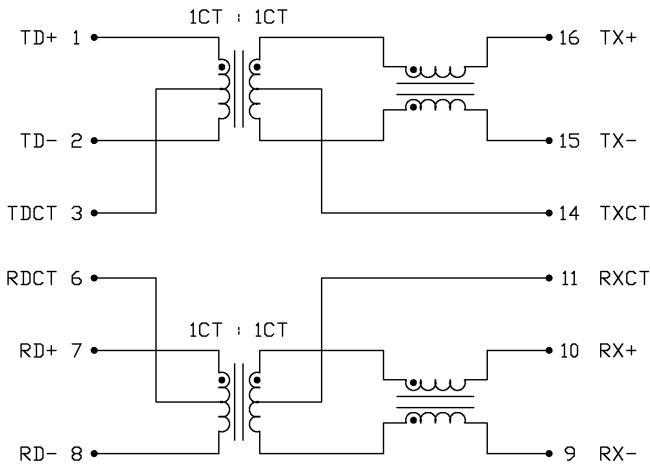


THE INFORMATION CONTAINED HEREIN IS CONSIDERED "PROPRIETARY" TO BEL FUSE INC. AND SHALL NOT BE COPIED, REPRODUCED OR DISCLOSED WITHOUT THE WRITTEN APPROVAL OF BEL FUSE INC.



SCHEMATIC



ELECTRICAL CHARACTERISTICS @ 25°C

<p> URNS RATIO Tx (16&14&15) : (1&3&2) Rx (7&6&8) : (10&11&9) </p> <p> PHASING DCL (-40°C - +85°C) WITH 8mA DC BIAS & 100mVrms @ 100kHz Rx (10&9) OPEN 7&8 Tx (16&15) OPEN 1&2 </p> <p> LEAKAGE INDUCTANCE, Le (-40°C - +85°C) MEASURED WIHT 100mVrms @ 1MHz Rx (10&9) WITH 7&8 SHORTED Tx (16&15) WITH 1&2 SHORTED </p> <p> INTERWINDING CAPACITANCE, Cw/w Rx (7&8 TO 10&9) Tx (1&2 TO 16&15) </p> <p> DCR WINDING RESISTANCE (1-2) ; (7-8) </p> <p> INSERTION LOSS @ 100kHz TO 80MHz </p> <p> RETURN LOSS (UNDER 100Ω ±15% ENVIRONMENT) @ 0.5 TO 30 MHz @ 30 TO 60 MHz @ 60 TO 80 MHz </p> <p> COMMON MODE TO COMMON MODE ATTENUATION @ 0.1 TO 80 MHz @ 80 TO 125 MHz @ 125 TO 250 MHz </p> <p> CROSSSTALK @ 0.1 TO 80 MHz @ 80 TO 125 MHz @ 125 TO 250 MHz </p> <p> COMMON MODE TO DIFFERENTIAL MODE ATTENUATION @ 0.1 TO 80 MHz @ 80 TO 125 MHz @ 125 TO 250 MHz </p> <p> HIPDT </p>	<p> 1CT : 1CT 1CT : 1CT </p> <p> 16 TO 1 ; 15 TO 2 10 TO 7 ; 9 TO 8 </p> <p> 350μH MIN. 350μH MIN. </p> <p> 0.4μH MAX. 0.4μH MAX. </p> <p> 25pF MAX. 25pF MAX. </p> <p> 1.0Ω MAX. </p> <p> 1.0dB MAX. </p> <p> 16dB MIN. 16-20 LOG (f/30MHz) 10dB MIN. </p> <p> 38dB MIN. 30dB MIN. 10dB MIN. </p> <p> 38dB MIN. 30dB MIN. 10dB MIN. </p> <p> PER HAND-WORK-03 </p>
--	--

ORIGINATED BY	DATE	TITLE	PART NO. / DRAWING NO.	STANDARD DIM. TOL. IN INCH	[] METRIC DIM. AS REFERENCE	 COMPONENTS ON A CONNECTED PLANE	
HQ	01-18-06	10/100BASE-T MODULE S558-5999-Z6-F	X5585999Z6-F	.X	UNIT : INCH [mm]		REV. : A
DRAWN BY	DATE		FILE NAME	.XX ±0.01	SCALE : N/A		SIZE : A4
DQ Chen	01-18-06		X5585999Z6FA.DWG	.XXX ±0.005		PAGE : 2	

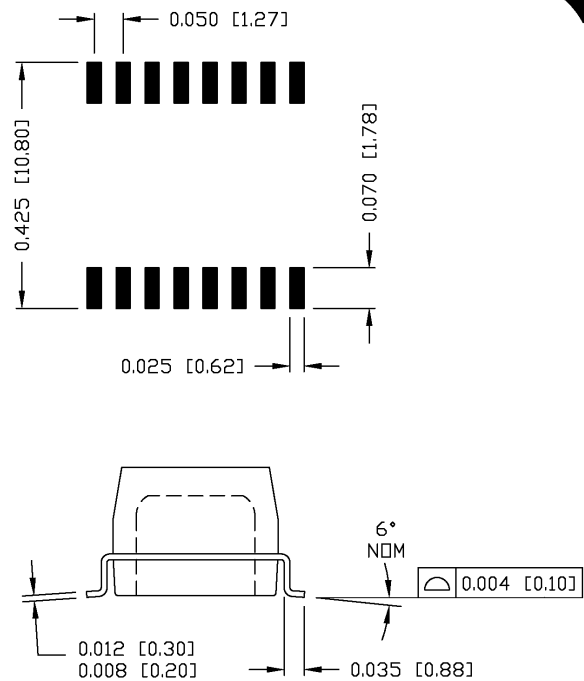
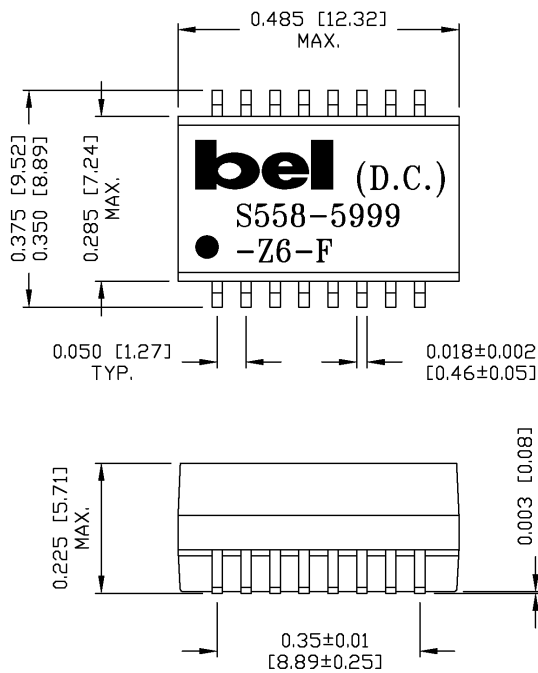
DC002(2)032305

This document is electronically generated. This is a controlled copy if used internally

THE INFORMATION CONTAINED HEREIN IS CONSIDERED "PROPRIETARY" TO BEL FUSE INC. AND SHALL NOT BE COPIED, REPRODUCED OR DISCLOSED WITHOUT THE WRITTEN APPROVAL OF BEL FUSE INC.



SUGGESTED PCB PAD LAYOUT



NOTES:

- STANDARD MARKING REFER TO DOC. HAND-WORK-04.
- PACKAGE CODE: "QBS001".

ORIGINATED BY	DATE	TITLE	PART NO. / DRAWING NO.	STANDARD DIM. TOL. IN INCH	[] METRIC DIM. AS REFERENCE	 COMPONENTS ON A CONNECTED PLANE	
HQ	01-18-06	MECHANICAL DRAWING	X5585999Z6-F	.X	UNIT : INCH [mm]		REV. : A
DRAWN BY	DATE	S558-5999-Z6-F	FILE NAME	.XX ±0.01 .XXX ±0.005	SCALE : N/A		SIZE : A4
DQ Chen	01-18-06		X5585999Z6FA.DWG			PAGE : 3	

DC002(2)032305

This document is electronically generated. This is a controlled copy if used internally