

| CUSTOMER TERMINAL | RoHS | LEAD(Pb)-FREE |
|-------------------|------|---------------|
| Sn96%, Ag4% | Yes | Yes |

more than you expect



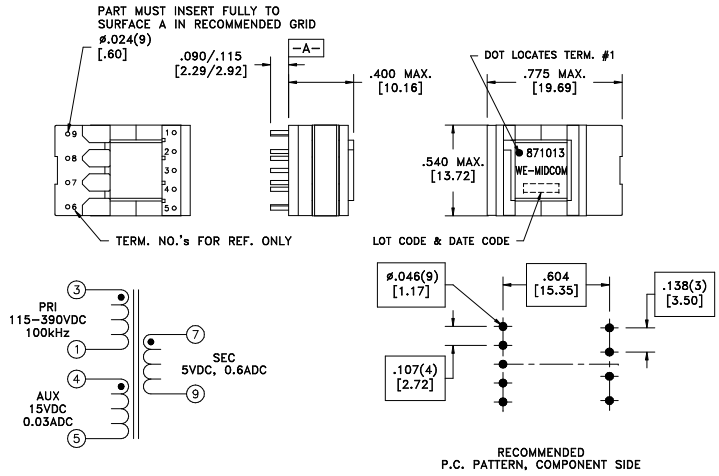
ELECTRICAL SPECIFICATIONS @ 25°C unless otherwise noted:

| PARAMETER | TEST CONDITIONS | VALUE |
|--------------------|--|----------------------|
| D.C. RESISTANCE | 3-1 @20°C | 5.40 ohms max. |
| D.C. RESISTANCE | 4-5 @20°C | 1.20 ohms max. |
| D.C. RESISTANCE | 7-9 @20°C | 0.048 ohms max. |
| INDUCTANCE | 3-1 10kHz, 100mVAC, Ls | 1.80mH ±10% |
| SATURATION CURRENT | 20% rolloff from initial | 350mA |
| LEAKAGE INDUCTANCE | 3-1 tie(4+5, 7+9), 100kHz, 100mVAC, Ls | 20uH typ., 35uH max. |
| DIELECTRIC | 3-7 tie(1+4), 4500VAC, 1 second | 4500VAC, 1 minute |
| DIELECTRIC | 3-4 1500VAC, 1 second | 1500VAC, 1 minute |
| TURNS RATIO | (3-1):(4-5) | 5.67:1, ±3% |
| TURNS RATIO | (3-1):(7-9) | 17:1, ±3% |

GENERAL SPECIFICATIONS:

OPERATING TEMPERATURE RANGE: -40°C to +125°C including temp rise.

Designed to comply with the following requirements as defined by IEC61558-2-17:
 - Reinforced insulation for a primary circuit at a working voltage of 400VDC.



DETAILS SUBJECT TO CHANGE

| | | | | | | |
|------|------|--|------------------------|--|-------------------------------------|------------------------------|
| REV. | DATE | Packaging Specifications Method: Tray PKG-0103 www.midcom-inc.com | | Tolerances unless otherwise specified: Angles: ±1° Fractions: ±1/64 Decimals: ±.005 [.13] Footprint: ±.001 [.03] | DRAWING TITLE TRANSFORMER | PART NO. 750871013 |
| 6A | 2/10 | SEE REVISION SHEET FOR REVISION LEVEL | CONVENTIONAL PLACEMENT | This drawing is dual dimensioned. Dimensions in brackets are in millimeters. | eiSos p/n: 750871013 | SPECIFICATION SHEET 1 OF 1 |