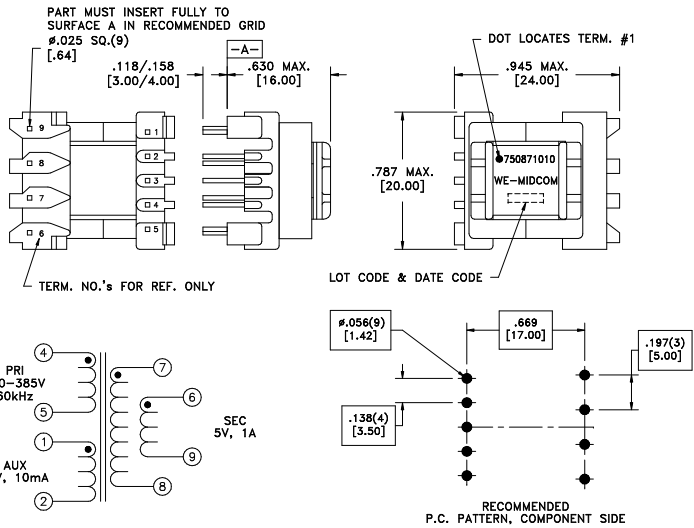


|                   |      |               |
|-------------------|------|---------------|
| CUSTOMER TERMINAL | RoHS | LEAD(Pb)-FREE |
| Sn96%, Ag4%       | Yes  | Yes           |

more than you expect



ELECTRICAL SPECIFICATIONS @ 25°C unless otherwise noted:

| PARAMETER          | TEST CONDITIONS                            | VALUE             |
|--------------------|--|-------------------|
| D.C. RESISTANCE    | 1-2 @20°C                                  | 1.05 ohms max.    |
| D.C. RESISTANCE    | 4-5 @20°C                                  | 6.00 ohms max.    |
| D.C. RESISTANCE    | 6-9 @20°C                                  | 0.052 ohms max.   |
| D.C. RESISTANCE    | 7-8 @20°C                                  | 0.066 ohms max.   |
| INDUCTANCE         | 4-5 10kHz, 100mVAC, Ls                     | 3.30mH ±10%       |
| LEAKAGE INDUCTANCE | 4-5 tie(1+2, 6+7+8+9), 100kHz, 100mVAC, Ls | 40uH max.         |
| DIELECTRIC         | 4-6 tie(1+5, 6+7), 5000VAC, 1 second       | 4000VAC, 1 minute |
| DIELECTRIC         | 1-4 1875VAC, 1 second                      | 1500VAC, 1 minute |
| URNS RATIO         | (4-5):(6-9)                                | 14.36:1, ±1%      |
| URNS RATIO         | (4-5):(7-8)                                | 14.36:1, ±1%      |
| URNS RATIO         | (4-5):(1-2)                                | 6.32:1, ±1%       |

GENERAL SPECIFICATIONS:  
 OPERATING TEMPERATURE RANGE: -40°C to +125°C.

|      |       |  |  |  |                                     |                              |
|------|-------|--|--|--|-------------------------------------|------------------------------|
| REV. | DATE  | Packaging Specifications<br>Method: Tray<br>PKG-0058<br>www.midcom-inc.com |  | Tolerances unless otherwise specified:<br>Angles: ±1°<br>Fractions: ±1/64<br>Decimals: ±.005 [.13]<br>Footprint: ±.005 [.13] | DRAWING TITLE<br><b>TRANSFORMER</b> | PART NO.<br><b>750871010</b> |
| 6A   | 10/08 | SEE REVISION SHEET FOR REVISION LEVEL                                      |  | This drawing is dual dimensioned. Dimensions in brackets are in millimeters.   | eISos p/n: 750871010                | SPECIFICATION SHEET 1 OF 1   |