

### CST306-2T

**Description:**

Designed for switching power supply applications, Triad current sense transformers are used to detect the current passing through a conductor. These transformers are very reliable and operate over the frequency range of 20 kHz-200 kHz.

**Electrical Specifications (@25C)**

ET V $\mu$ SEC REF 20kHz	Turns Count	Min. Ind. mH	DCR Max. $\Omega$	Pri. Amps
1000	100 CT	14.0	1.550	25.0 RMS

**Safety:**

These current sense transformers are constructed of UL rated 130°C materials.

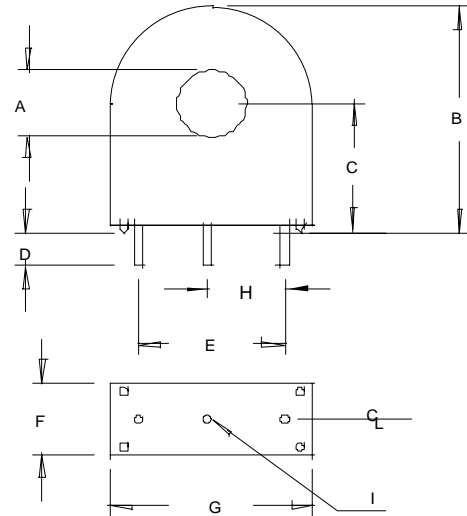
**Dimensions:**

A Min	B Max	C Ref	D Ref	E Ref	F Max	G Max	H Ref	H Dia. Pins
.180	.915	.528	.127	.500	.385	.690	.250	.032

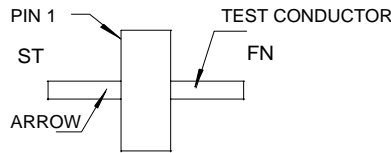
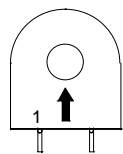
Units: In inches

**Technical Notes:**

1. Derate ET product by 32% for 50 kHz, 52% for 100 kHz and 50% for unidirectional operation.
2. Rated primary current renders approximately 40°C temp. rise.
3. Maximum recommended terminating resistance of 1 ohm per turn.
4. Primary is inserted through hole in casting.



1. START OF TEST CONDUCTOR TO HAVE THE SAME POLARITY AS PIN 1
2. DECAL ARROW ON CASE TO INDICATE POLARITY



POLARITY DETAIL TOP VIEW

**RoHS Compliance:** As of manufacturing date February 2005, all standard products meet the requirements of 2002/95/EC, known as the RoHS initiative.

\* Upon printing, this document is considered "uncontrolled". Please contact Triad Magnetics' website for the most current version.