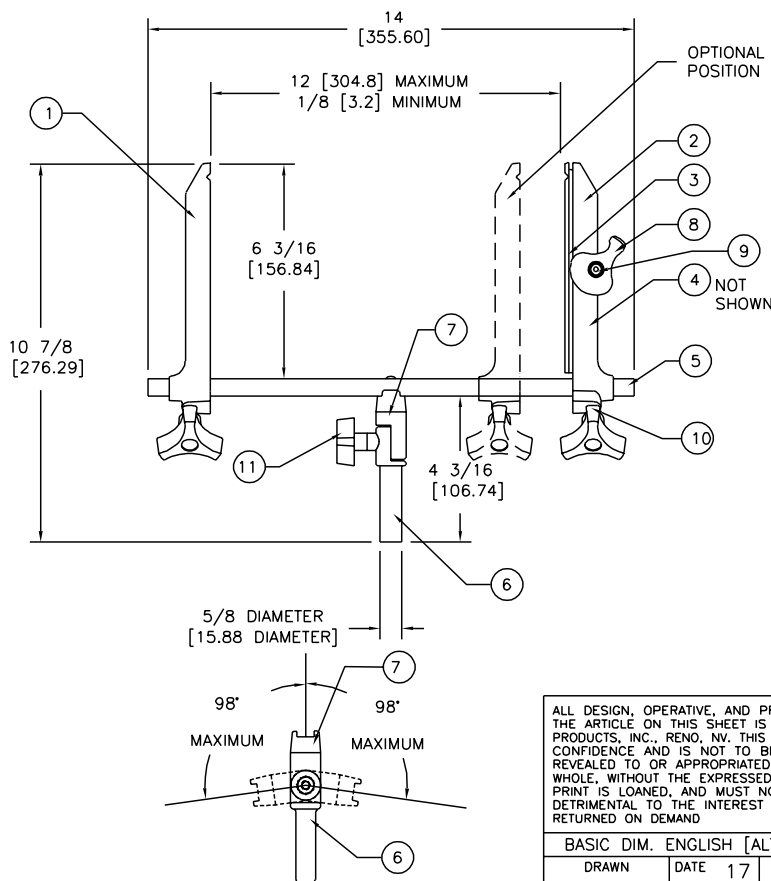


ALL DIMENSIONS ARE
FOR REFERENCE ONLY
DIMENSIONS ARE IN INCHES [MILLIMETERS]
UNLESS OTHERWISE NOTED

PRODUCT SPECIFICATION SHEET		DWG NO	315 SP	
REVISIONS		TITLE		
REV	ECO	DESCRIPTION	BY/DATE	APPROVED
A		INITIAL RELEASE	IB 28 NOV 95	
B		ADDED VIEW TO SHOW PIVOT OF BAR CONNECTOR	IB 17 JUL 96	
C	1027	REDESIGNED ARMS, DISCONTINUED 318-12, 16, 20, 24, 28	IB 16 JUL 98	



SPECIFICATIONS

OVERALL HEIGHT 10 7/8 [274.7]
WIDTH..... 14 [355.6]

SHIPPING WEIGHT 1.28 POUNDS [.58 KG]

COLOR BURNISHED ALUMINUM

WISE OPENING 12 [304.8] MAXIMUM
1/8 [3.2] MINIMUM

MATERIAL:

1. RIGID ARM 380 ALUMINUM DIE CASTING
 2. TENSION ARM 380 ALUMINUM DIE CASTING
 3. TENSION INSERT 380 ALUMINUM DIE CASTING
 4. TENSION SPRING .. PV#BSS032-125 SPRING STEEL
 5. CROSS BAR. 1/2 [12.7] SQ STEEL TUBE
BLACK OXIDE
 6. MOUNTING STEM .. 380 ALUMINUM DIE CASTING
 7. BAR CONNECTOR .. 380 ALUMINUM DIE CASTING
 8. POSITION CAM 380 ALUMINUM
 9. SCREW STEEL10-32 X 5/8
BLACK OXIDE
 10. KNOB K1420-50S3 (2 EA.) BLACK PLASTIC
 11. KNOB K1420-13 (1 EA.) BLACK PLASTIC
- ACCESSORY CROSS BARS AVAILABLE
1. 318-14 ... 14 [355.6]
 2. 318-18 ... 18 [457.2]
 3. 318-22 ... 22 [558.8]
 4. 318-26 ... 26 [660.4]
 5. 318-30 ... 30 [762.0]

ALL DESIGN, OPERATIVE, AND PROCESS DATA PERTAINING TO THE ARTICLE ON THIS SHEET IS THE PROPERTY OF PANAVISE PRODUCTS, INC., RENO, NV. THIS INFORMATION IS DISCLOSED IN CONFIDENCE AND IS NOT TO BE COPIED, REPRODUCED, OR REVEALED TO OR APPROPRIATED BY OTHERS, IN PART OR IN WHOLE, WITHOUT THE EXPRESSED CONSENT OF PANAVISE. THIS PRINT IS LOANED, AND MUST NOT BE USED IN ANY MANNER DETRIMENTAL TO THE INTEREST OF PANAVISE, AND MUST BE RETURNED ON DEMAND



PANAVISE®
7540 Colbert Drive, Reno, Nevada 89511-1225
Phone (702) 850-2900, Fax (702) 850-2929

TITLE
315 CIRCUIT BOARD
HOLDER

BASIC DIM. ENGLISH [ALTERNATE DIM. METRIC]

DRAWN	DATE	SCALE	SIZE	DWG. NO.	REV
I BENNETT	JUL 96	NONE	SHT 1 OF 1	315 SP	C