

4

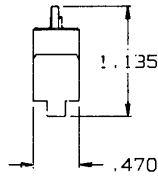
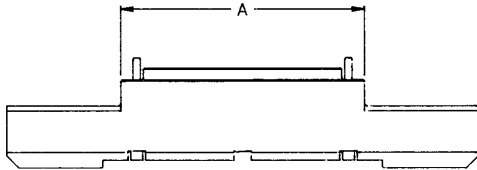
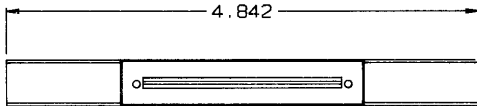
3

2

1

THIS DRAWING IS UNPUBLISHED. RELEASED FOR PUBLICATION
 COPYRIGHT 19 BY AMP INCORPORATED. ALL RIGHTS RESERVED.

LOC	DIST	REVISIONS			
#	LN	DESCRIPTION	DATE	BY	APPD
AD	47				
A		REDRAWN PER EC 0430-0037-97	6-13-97	JG	DM



4.000	266	767514-7
3.500	228	767514-6
3.000	190	767514-5
2.500	152	767514-4
2.000	114	767514-3
1.500	76	767514-2
1.000	38	767514-1
A	FOR NO OF POSITIONS	PART NUMBER

THIS DRAWING IS A CONTROLLED DOCUMENT.		DWN J. GERACE 6-13-97 D.P. D. McKNIGHT 6-13-97 APPD A. MONK 6-13-97	AMP AMP Incorporated Harrisburg, PA 17105-3608
DIMENSIONS: INCHES 	TOLERANCES UNLESS OTHERWISE SPECIFIED: 0 P.L.C ±.005 1 P.L.C ±.005 2 P.L.C ±.005 3 P.L.C ±.010 4 P.L.C ±.005 ANGLES ±.005	NAME SINGLE INSERTER, PLUG, MICTOR PRODUCT SPEC - APPLICATION SPEC - WEIGHT -	SIZE A3 CASE CODE 00779 DRAWING NO C-767514
MATERIAL ALUMINUM	FINISH NICKEL	CUSTOMER DRAWING	SCALE 1:1 SHEET 1 OF 1 REV A