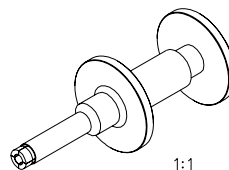
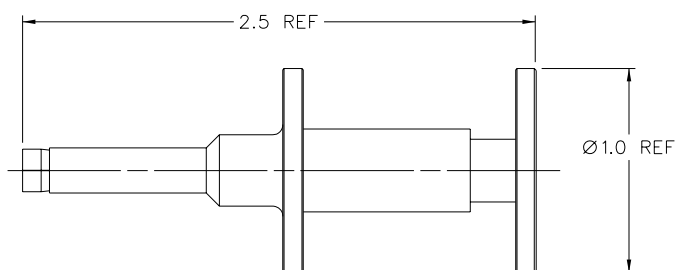
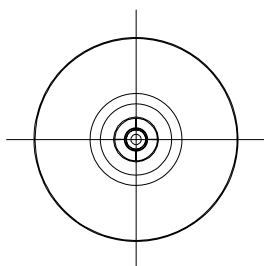


PART NUMBER 127-0000-900	BODY STAINLESS STEEL	COLLET BERYLLIUM COPPER NICKEL PLATED
-----------------------------	-------------------------	---



1:1



DRAWING NO. B-127-0000-900	
0	REVISIONS
ENGINEERING RELEASE	
1	4-13-07 P A T J R K P D W 4-19-07 ECN 50991

CUSTOMER DRAWING

THIS DRAWING TO BE INTERPRETED
PER ASME Y 14.5M - 1994

"μ STATION"

COMPANY CONFIDENTIAL

TOLERANCE UNLESS OTHERWISE SPECIFIED	DRAWN BY PAT	DATE 4-10-07
DECIMALS _____ mm	CHECKED BY PDW	DATE 4-18-07
.XX _____	APPROVED BY JRK	DATE 4-18-07
.XXX _____	RELEASE DATE 4-19-07	
MATL _____	U/M INCH	SCALE 2:1
FINISH _____		

	Connectivity Solutions P.O. Box 1732 Waseca, MN 56093 1-800-247-8256
	TITLE SMP BULLET INSTALLATION AND EXTRACTION TOOL
SHEET 2 OF 2	DRAWING NO. B-127-0000-900

NOTES:
1. APPLICATION: USED FOR INSTALLATION AND EXTRACTION OF 127-0901-801 AND 127-0901-811 FEMALE/FEMALE ADAPTERS.