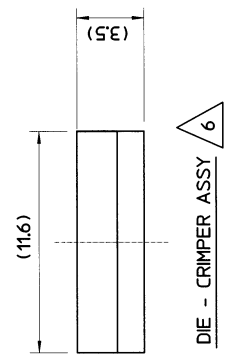
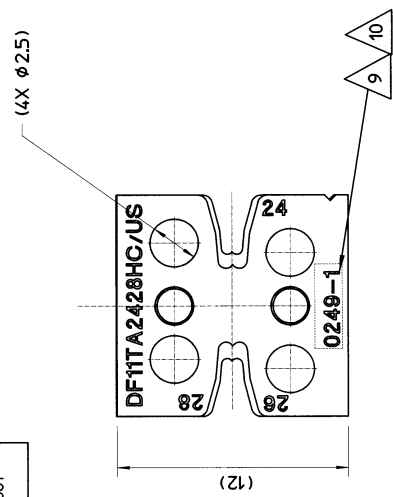
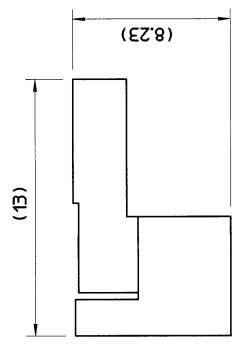
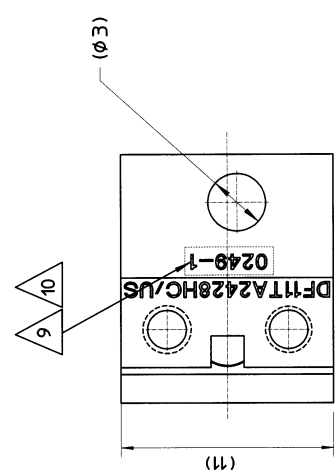


THE INFORMATION CONTAINED HEREIN IS PROPRIETARY TO HIROSE ELECTRIC (USA), INC. ALL RIGHTS THEREIN ARE RESERVED AND SHALL NOT BE USED, DUPLICATED, OR FURTHER DISSEMINATED FOR ANY PURPOSE WITHOUT THE CONSENT OF HIROSE ELECTRIC (USA), INC.

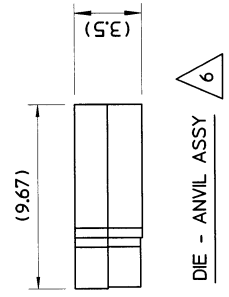
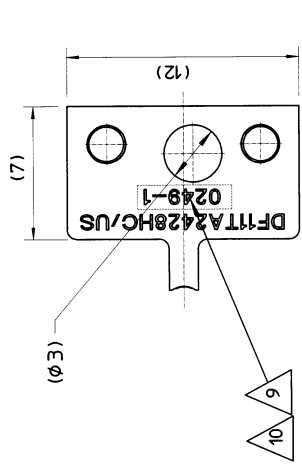
REVISIONS				
ZONE	REV.	DESCRIPTION	DATE	APPROVED
	N/R	NEW RELEASE	2/10/03	KMG
	A	REVISED PER DCN# 0872	5-19-03	A.S
	B	REVISED PER DCN# 0882	6/18/03	M.N



DIE - CRIMPER ASSY / 6

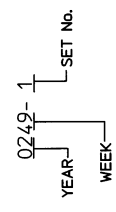


DIE - CONTACT HOLDER ASSY / 6



DIE - ANVIL ASSY / 6

DATE CODE EXPLANATION:



11. PACKAGING: CARDBOARD BOX, SIZE 203mm X 76mm X 51mm (8" X 3" X 2").
 10. ALL THREE (3) DIES ARE SOLD AS MATCHING ASSEMBLY ONLY, AND TO BE MARKED WITH THE SAME DATE CODE.
 9. DATE CODE AND SET NO.; SEE EXAMPLE FOR EXPLANATION.

8. PART/NO. DF11-TA2428HC/US-DS TO BE PURCHASED AS A SET ONLY.
 7. RECOMMENDED NUMBER OF CRIMPING CYCLES - 15,000.
 6. FOR ASSEMBLY, INSTALLATION AND OPERATION OF THIS DIE SET REFER TO INSTRUCTION MANUAL P/No. PS077.

5. THIS DIE SET RECOMMENDED TO BE USED ONLY WITH APPLICABLE HAND CRIMP TOOL, P/No. HRUS-HT-1, TO CRIMP SOCKET TERMINAL, P/No. DF11-2428SC/SCA.
 4. APPLICABLE WIRE STYLE: UL 1007, AWG 24, 26 AND 28.

3. MATERIAL AND FINISHES:
 DIES, ANVILS, CONTACT STOPPER, SPACER BLOCK AND STOPPER PIN- TOOL STEEL.
 2. DIMENSIONS IN () ARE FOR REFERENCE ONLY

1. DIMENSIONING AND TOLERANCING PER ANSI/ASME Y14.5M-1994
 NOTES (UNLESS OTHERWISE SPECIFIED)

CUSTOMER USE DRAWING

OAG18 FROM: HIROSE ELECTRIC (USA), INC. 3800 S. 170th Ave. Kent, WA 98032	APPROVALS Luis Lora Allia Stchur Mac Nagashima Kris McGuire	DATE 02/06/03 02/06/03 02/07/03 02/10/03
	USE UNLESS OTHERWISE SPECIFIED DIMENSION ALL DIMENSIONS IN MILLIMETERS TOLERANCES ARE: XX = ±0.1 XXX = ±0.05 XXXX = ±0.03 ANGLE = 4°	CL. NUMBER 5920-8501-2
PART NUMBER DF11-TA2428HC/US-DS	HRS HIROSE ELECTRIC (USA), INC. 3800 S. 170th Ave., CALIFORNIA 93065	REV. B
APPLICATION N/A	SCALE N/A	SHEET 1 OF 1