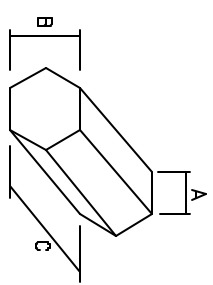
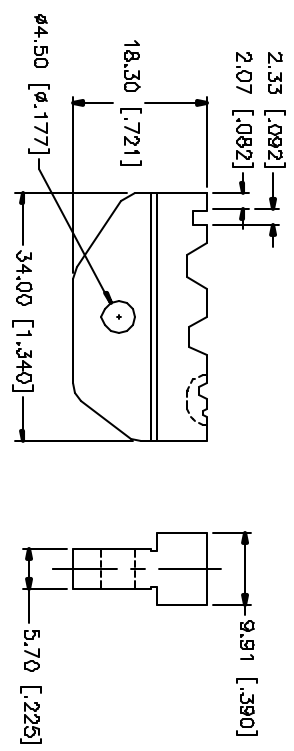
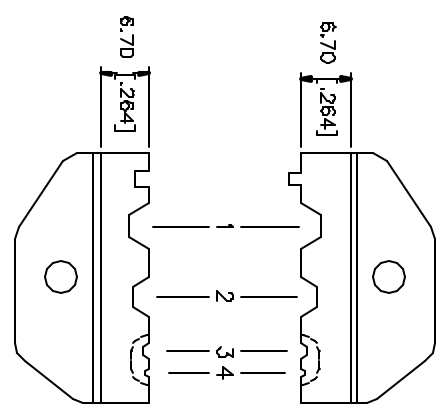
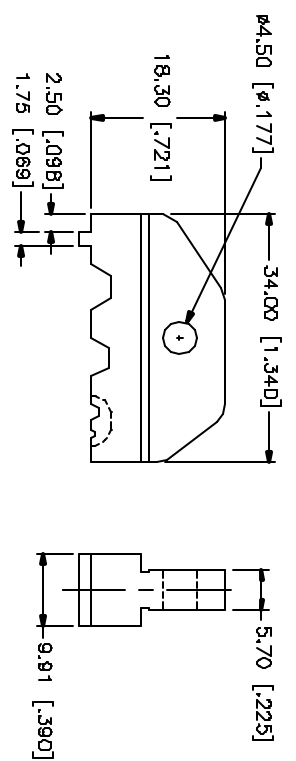


REV.	DATE	DESCRIPTION
NC	08/31/04	INITIAL RELEASE



	A	B	C
1	3.12 [ø.123]	5.40 [ø.213]	9.91 [ø.390]
2	2.61 [ø.103]	4.52 [ø.178]	9.91 [ø.390]
3	1.00 [ø.039]	1.72 [ø.068]	2.54 [ø.100]
4	.820 [ø.024]	1.07 [ø.042]	2.54 [ø.100]

<p>UNLESS OTHERWISE SPECIFIED DIMENSIONS ARE IN MILLIMETERS DIMENSIONS IN [] ARE IN INCHES AND THE DECIMAL FRACTION SHALL FOLLOW THE DECIMAL FRACTION.</p> <p>UNLESS OTHERWISE SPECIFIED DIMENSIONS ARE IN MILLIMETERS DIMENSIONS IN [] ARE IN INCHES AND THE DECIMAL FRACTION SHALL FOLLOW THE DECIMAL FRACTION.</p>		<p>APPROVALS</p> <p>DATE</p>		<p>DESCRIPTION</p> <p>CRIMP DIE SET</p>	
7		DRAWN	G.R.S.	08/31/04	
6		CHECKED			
5		ISSUED			
4					
3					
2					
1					
DESCRIPTION		MATERIAL		FINISH	
DIE BODY		CAST STEEL		BLK. OXIDE	
QTY		DO NOT SCALE DRAWING		CVD FILE	
				C:/MISC/47-20002.DWG	
				DWG. NO.	
				47-20002.DWG	
				REV.	
				NC	
				SIZE	
				A	
				SCALE	
				NA	

Amphenol Connex