

AMP 635 REV 1/66 8

7

6

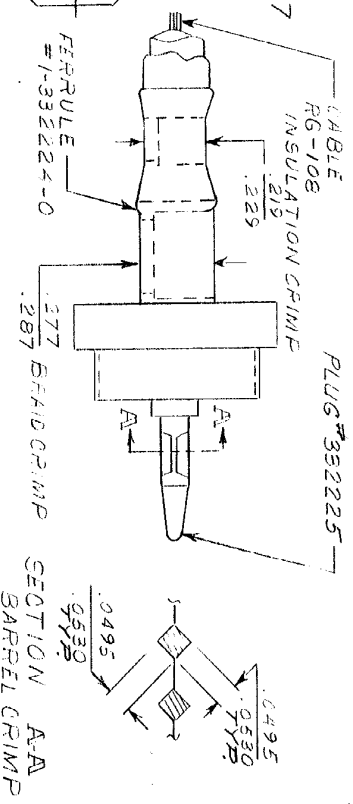
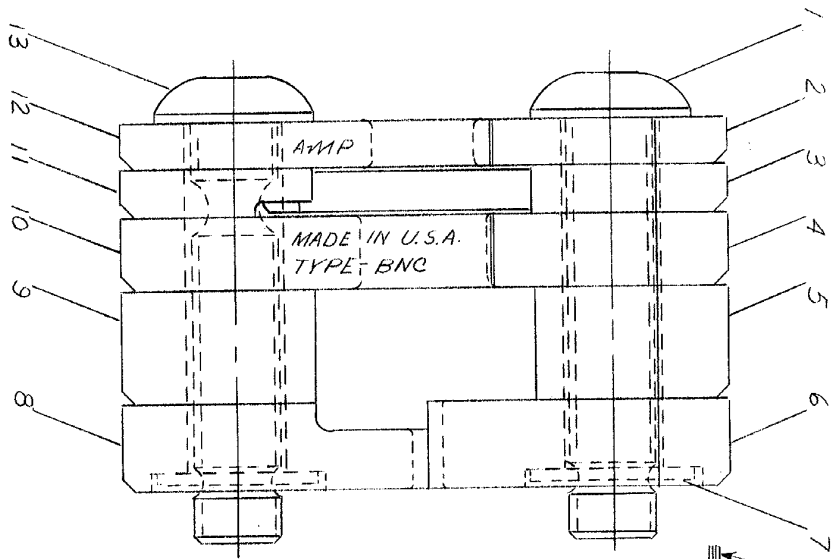
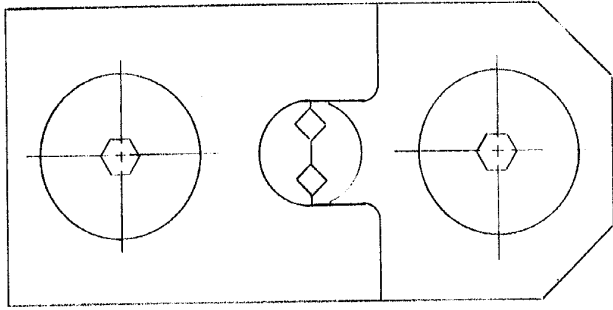
5

4

3

2

1



THE CRIMP DIMENSIONS APPLY ONLY TO THE ABOVE COMBINATIONS ON A CRIMPED PRODUCT.
 METHOD OF GAGING CRIMP DIMS.

- | | | | |
|---|------------|------------------------|----|
| 1 | 59590-2 | SCREW - SPECIAL | 13 |
| 1 | 1-306540-7 | INDENTER - INSULATION | 12 |
| 1 | 59589-3 | SPACER | 11 |
| 1 | 1-306542-3 | INDENTER - BRAID | 10 |
| 1 | 306192-8 | SPACER - LOWER | 9 |
| 1 | 306774 | INSERT - BARREL, LOWER | 8 |
| 2 | 1-21046-3 | RING - RETAINING | 7 |
| 1 | 306773 | INSERT - BARREL, UPPER | 6 |
| 1 | 1-306191-1 | SPACER - UPPER | 5 |
| 1 | 1-306541-3 | ANVIL - BRAID | 4 |
| 1 | 59547-3 | EJECTOR | 3 |
| 1 | 1-306539-7 | ANVIL - INSULATION | 2 |
| 1 | 1-306131-0 | SCREW - SPECIAL | 1 |

REVISION RECORD		DR	CHK DATE
A	REVISED	85	8-7
69708			
NUMBER			
DESCRIPTION			
69708			
REQUIRED PER ASSEMBLY			
AMP 635 REV 1/66 8			
AMP PRODUCTS COVERED BY PATENTS AND/OR PATENTS PENDING.			
MATERIAL AND FINISH			
CLASS			
TYPE			
LOC			
NO			
REV			

AMP AMP INCORPORATED
 HARRISBURG, PENNA.

CUSTOMER COPY
 REFERENCE ONLY

DIE ASSEMBLY