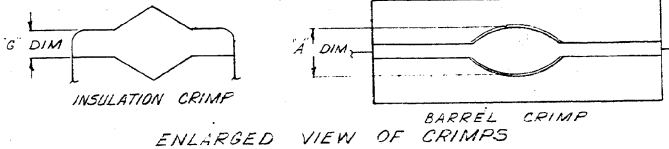
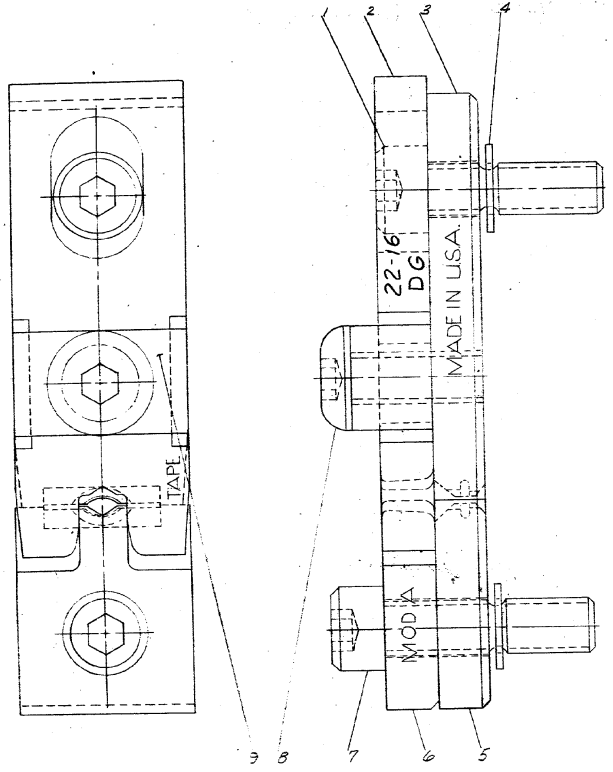
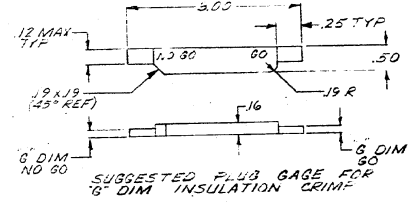
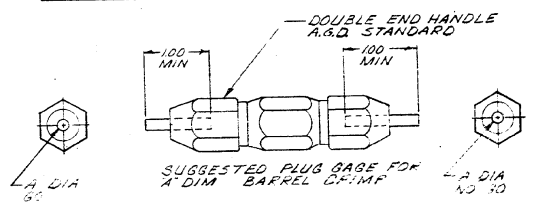


NUMBER **69903**

PLUG GAGE DIMENSIONS APPLY WHEN TOOL IS BOTTOMED BUT NOT UNDER PRESSURE.



G DIM AT POS #1		A DIM	
GO	NO GO	GO	NO GO
.090	.050	.069	.075



SUPERSEDED BY IS-2423

NUMBER	NAME	REMARKS	ITEM NO.
1	307275-1	SADDLE	9
1	2-595177-9	SCREW (10-32 UNF BA X 4.0 LONG)	8
1	59781-6	SCREW (5-16 UNF BA X 1.0 LONG)	7
1	3-59619-3	ANVIL - INSULATION	6
1	307213-3	INSERT - BARREL LOWER	5
2	1-21046-3	RINGS - RETAINING	4
1	307212-3	INSERT - BARREL UPPER	3
1	1-307285-1	INDENTER - INSULATION	2
1	59781-2	SCREW	1

REQUIRED PER ASSEMBLY	MATERIAL AND FINISH	CUSTOMER COPY REFERENCE ONLY
<p>① BY AMP INCORPORATED. ALL RIGHTS RESERVED. AMP PRODUCTS COVERED BY PATENTS AND/OR PATENTS PENDING.</p> <p>DATE: 12-16-69 BY: B. D. [Signature]</p>	<p>INSULATION</p> <p>22-16</p> <p>TOLERANCE EXCEPT AS NOTED: ± .001</p>	<p>AMP INCORPORATED HARTFORD, CT 06183</p> <p>USED ON 69275</p> <p>CROSS CRIMP DG</p> <p>69903 IN</p> <p>DIE ASSEMBLY MOD A</p>

REVISION	DATE	BY	CHKD
1	12-16-69	B. D. [Signature]	[Signature]
2	12-16-69	[Signature]	[Signature]