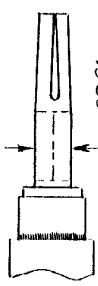
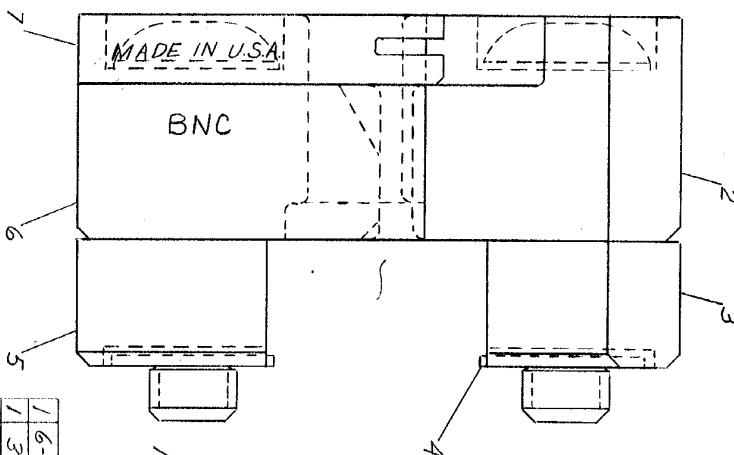
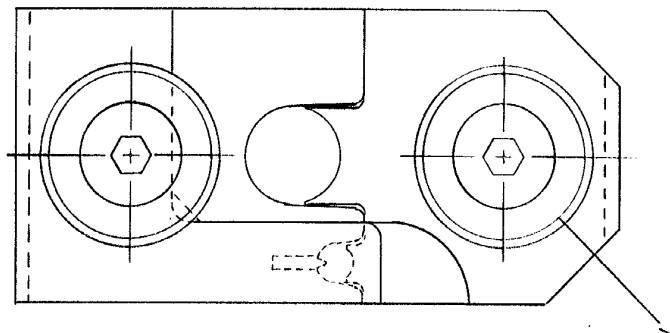


AMP 233 REV 7/69 8

PRINT TEST  
 5 9

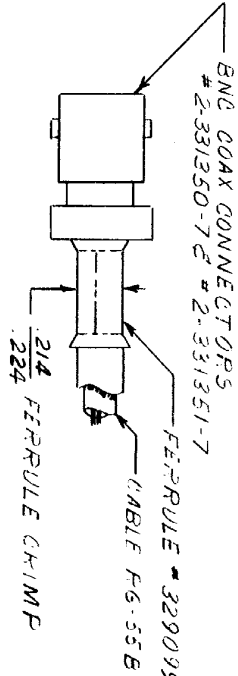
DIMENSIONS IN INCHES. DO NOT SCALE PRINT



FERRULE CRIMP  
 SCALE 2-1

CENTER CONTACT CRIMP  
 SCALE 4-1

THE CRIMP DIMENSIONS APPLY ONLY TO THE ABOVE COMBINATIONS ON A CRIMPED PRODUCT METHOD OF GAGING CRIMP DIMENSIONS  
**SUPERSEDED BY 152396**  
 2-16-73



REVISION RECORD	OR	CHK	DATE	NUMBER
1	SUPERSEDED	P	3/1	69727

REQUIRED PER ASSEMBLY	DESCRIPTION
	69727

OR	CHK	DATE

WIRE - RANGE - INSULATION	TYPE	ECONOMY	BNC	DOOR
16-55				

CLASS	NO	NO
		69727

DIE ASSEMBLY

NUMBER	NAME	REMARKS
1	6-304052-0 LOCATOR	
1	306508-1 INDENTER	
1	6-305832-8 SPACER-LOWER	
1	2-1-21046-3 RING-RETAINING	
1	8-305832-7 SPACER-UPPER	
1	306507-1 ANVIL	
2	306592-1 SCREW-SPECIAL	

©1964 AMP INCORPORATED. ALL RIGHTS RESERVED.  
 AMP PRODUCTS COVERED BY PATENTS AND/OR PATENTS PENDING.



CUSTOMER COPY  
 REFERENCE ONLY