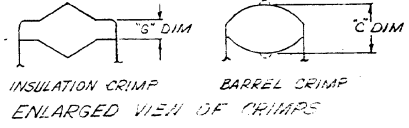
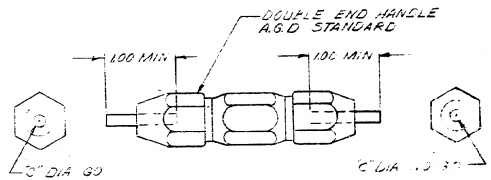


69877

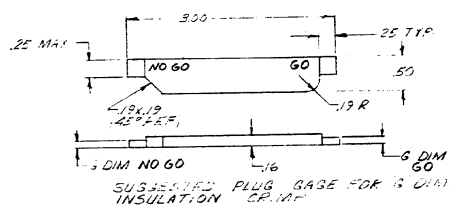
PLUG GAGE DIMENSIONS APPLY WHEN TOOL IS BOTTOMED BUT NOT UNDER PRESSURE.



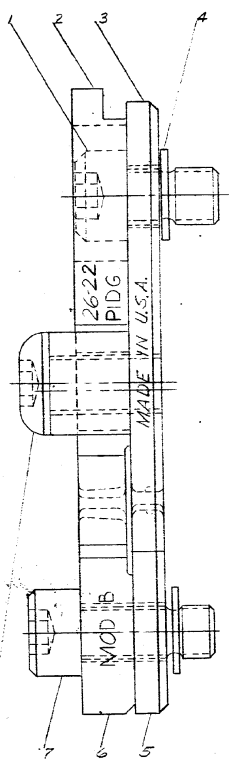
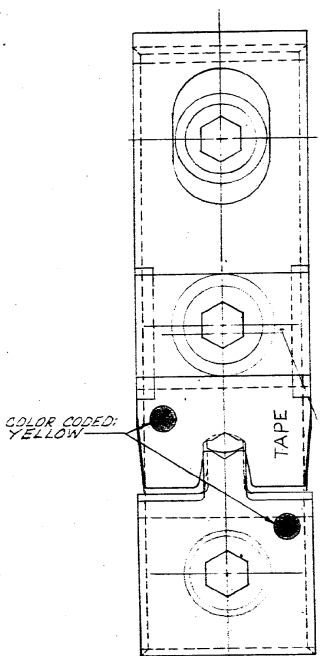
G DIM AT POS 7		C DIM	
GO	NO GO	GO	NO GO
.030	.050	.063	.069



SUGGESTED PLUG BASE FOR C DIM BARREL CRIMP



SUGGESTED PLUG BASE FOR G DIM INSULATION CRIMP



SUPERSEDED BY 15-2423

QTY	NUMBER	NAME	REMARKS	ITEM NO.
1	307275-1	SADDLE		9
1	2-59577-7	SCREW (1/16-32 UNF-3A X .390 LONG)		8
1	59781-7	SCREW - SPECIAL		7
1	1-59519-5	ANVIL - INSULATION		6
1	2-59615-0	ANVIL		5
2	21-21046-3	RING - RETAINING		4
1	59782-2	INDENTER		3
1	307285-3	INDENTER - INSULATION		2
1	59781-4	SCREW - SPECIAL		1

REQUIRED PER ASSEMBLY	NUMBER	NAME	REMARKS
	112569	112569	
MATERIAL AND FINISH		CUSTOMER COPY REFERENCE ONLY	
AMP INCORPORATED		AMP INCORPORATED	
MATERIAL AND FINISH		USED ON 69875	
WIRE RANGE - INSULATION		C PIDG	
26-22		69877	
TOLERANCE GROUP		4-1	
DATE		12-1-63	
NAME		DIE ASSEMBLY MOD B	

DATE	BY	REASON
12-1-63	J. J. J.	USED

